



**Northend, Hemel Hempstead, HP3 8TW**  
**Offers In Excess Of £255,000**

Situated in Northend, this delightful spacious top floor purpose-built flat offers a perfect blend of comfort and modern living. With two well-proportioned double bedrooms, this property is ideal for small families, couples, or individuals seeking a peaceful retreat. This property is not only a wonderful home but also benefits from its convenient location. Northend offers a friendly community feel while being close to local amenities, parks, and transport links, making it easy to explore the wider Hemel Hempstead area and beyond.

## Communal Hallway

### Entrance Hall

Lounge 27'4 max x 10'10 max (8.33m max x 3.30m max)



Modern Fitted Kitchen 11'6 x 7'7 (3.51m x 2.31m)



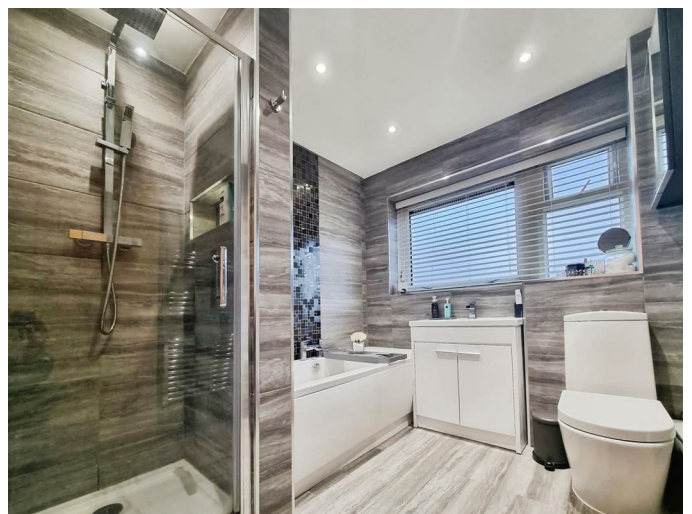
Bedroom One 12'5 x 9'7 (3.78m x 2.92m)



Bedroom Two 12'6 x 8'7 (3.81m x 2.62m)



## Bathroom



# Floor Plan

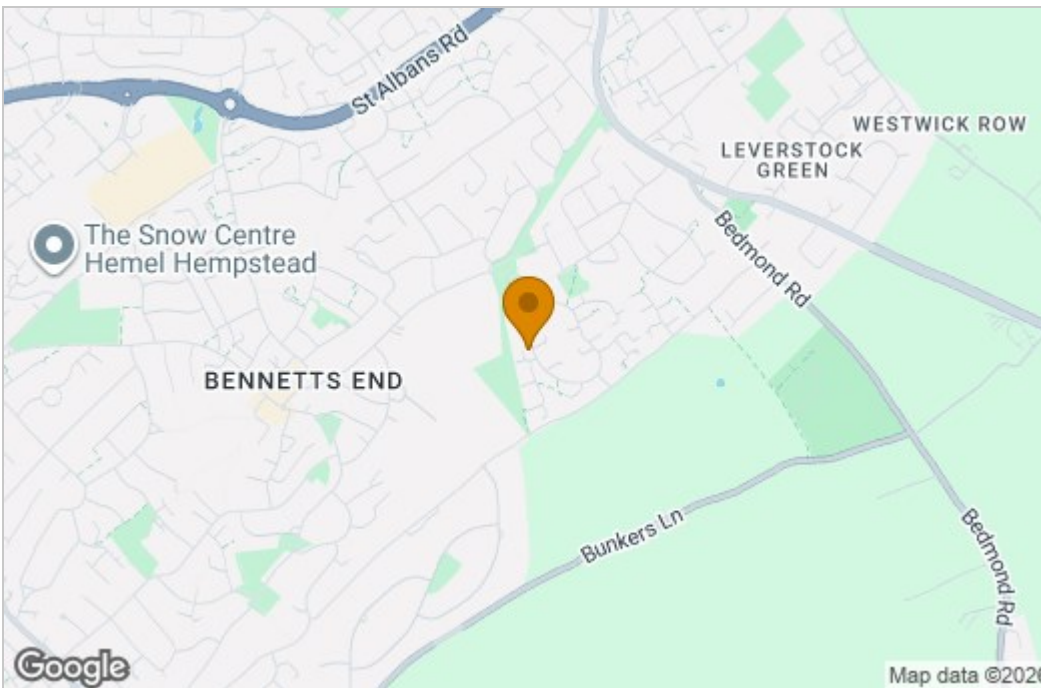


Floor Plan

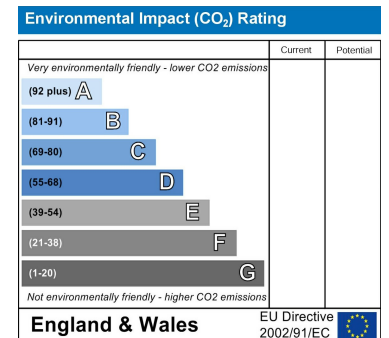
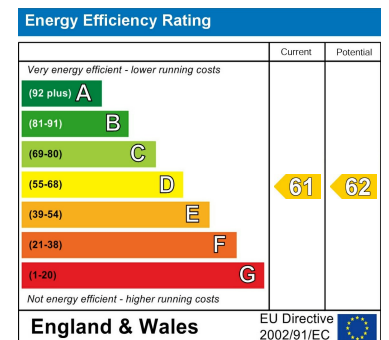
This floor plan is for illustrative purposes only. It is not drawn to scale. Any measurements, floor areas (including any total floor area), openings and orientations are approximate. No details are guaranteed, they cannot be relied upon for any purpose and do not form any part of any agreement. No liability is taken for any error, omission or misstatement. A party must rely upon its own inspection(s). Powered by www.Propertybox.io



# Area Map



# Energy Efficiency Graph



These particulars, whilst believed to be accurate are set out as a general outline only for guidance and do not constitute any part of an offer or contract. Intending purchasers should not rely on them as statements of representation of fact, but must satisfy themselves by inspection or otherwise as to their accuracy. No person in this firm's employment has the authority to make or give any representation or warranty in respect of the property.