

Beech Close

West Drayton • • UB7 9LQ
Offers In Excess Of: £525,000



coopers
est 1986

Beech Close

West Drayton • • UB7 9LQ

A well-presented and thoughtfully updated three-bedroom semi-detached home offering bright, spacious accommodation ideal for families, first-time buyers, or those looking to upsize. The property combines a traditional red-brick exterior and attractive bay frontage with a stylish, modern interior. At the heart of the home is a contemporary fitted kitchen with sleek high-gloss units, dark worktops, integrated appliances and a breakfast bar, creating a practical and sociable space. This leads through to a generous open-plan living and dining room, enhanced by a bay window that fills the room with natural light. A convenient ground floor WC completes the downstairs layout. Upstairs, the property offers three well-proportioned double bedrooms and a family bathroom. With a total floor area of approximately 904 sq ft, this is a comfortable, move-in-ready home that balances modern style with everyday functionality, set in a pleasant residential setting.

No chain

Three-bedroom semi-detached home

- Spacious open-plan living/dining room with bay window

Modern fitted kitchen with breakfast bar

Ground floor WC

Three double bedrooms

904 sq.ft

Spacious front & rear gardens

Potential to extend (STPP)

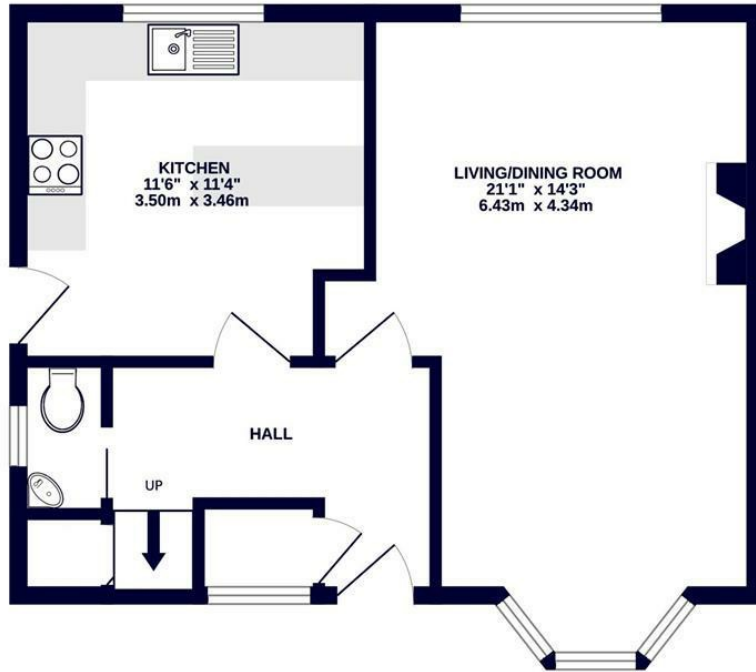
Popular residential location

These particulars are intended as a guide and must not be relied upon as statements of fact. Your attention is drawn to the Important Notice on the last page.

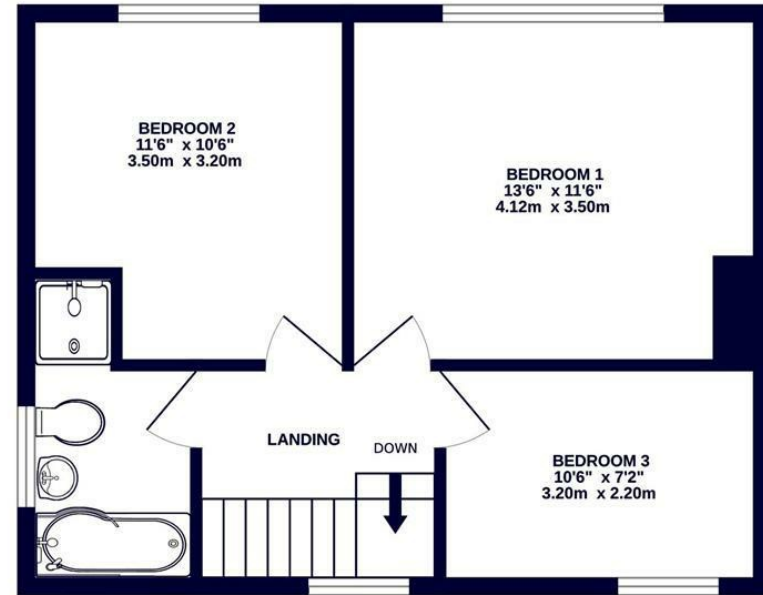




GROUND FLOOR
461 sq.ft. (42.8 sq.m.) approx.



1ST FLOOR
444 sq.ft. (41.2 sq.m.) approx.



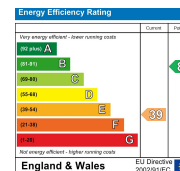
TOTAL FLOOR AREA : 904 sq.ft. (84.0 sq.m.) approx.

Whilst every attempt has been made to ensure the accuracy of the floorplan contained here, measurements of doors, windows, rooms and any other items are approximate and no responsibility is taken for any error, omission or mis-statement. This plan is for illustrative purposes only and should be used as such by any prospective purchaser. The services, systems and appliances shown have not been tested and no guarantee as to their operability or efficiency can be given.
Made with Metropix ©2026



1 Tavistock Road, West Drayton,
Middlesex, UB7 7QT
westdrayton@coopersresidential.co.uk

CoopersResidential.co.uk



Important Notice: These particulars, whilst believed to be accurate are set out as a general outline only for guidance and do not constitute any part of an offer or contract. Intending purchasers should not rely on them as statements or representation of fact, but must satisfy themselves by inspection or otherwise has the authority to make or give any representation or warranty in respect of the property.