



£179,950

At a glance...



2



1



1



EPC

TBC



COUNCIL
TAX

C

**holland
& odam**

46 Bluestone Court
Street
Somerset
BA16 0NF

TO VIEW

3 Farm Road, Street,
Somerset BA16 0BJ

01458 841411

street@hollandandodam.co.uk



Directions

Follow the High Street, Bear Inn on your left. Continue through the shopping centre, turn third right into Cranhill Road. Turn first left into Oxendale and turn left again. Proceed across the car park to Bluestone Court.

Services

Mains electricity, water and drainage are connected. Electric heating system.

Local Authority

Somerset Council
0300 1232224
somerset.gov.uk

Tenure

Leasehold
Length of Lease 125years from 1/04/2006
Service/Maintenance Charges £2405.14 per annum
Ground Rent £540.00 per annum



Location

Bluestone Court is situated just off the western end of the High Street and is within walking distance of town centre amenities. Street is a popular town providing an excellent shopping centre with the High Street and Clarks Village providing a choice of outlets. The town also provides indoor and open air swimming pools, theatre, health centre and a choice of pubs and restaurants. The neighbouring town of Glastonbury is an historic centre, famous for its Tor and picturesque Abbey. Wells is 9 miles and provides an attractive blend of history and day to day amenities.

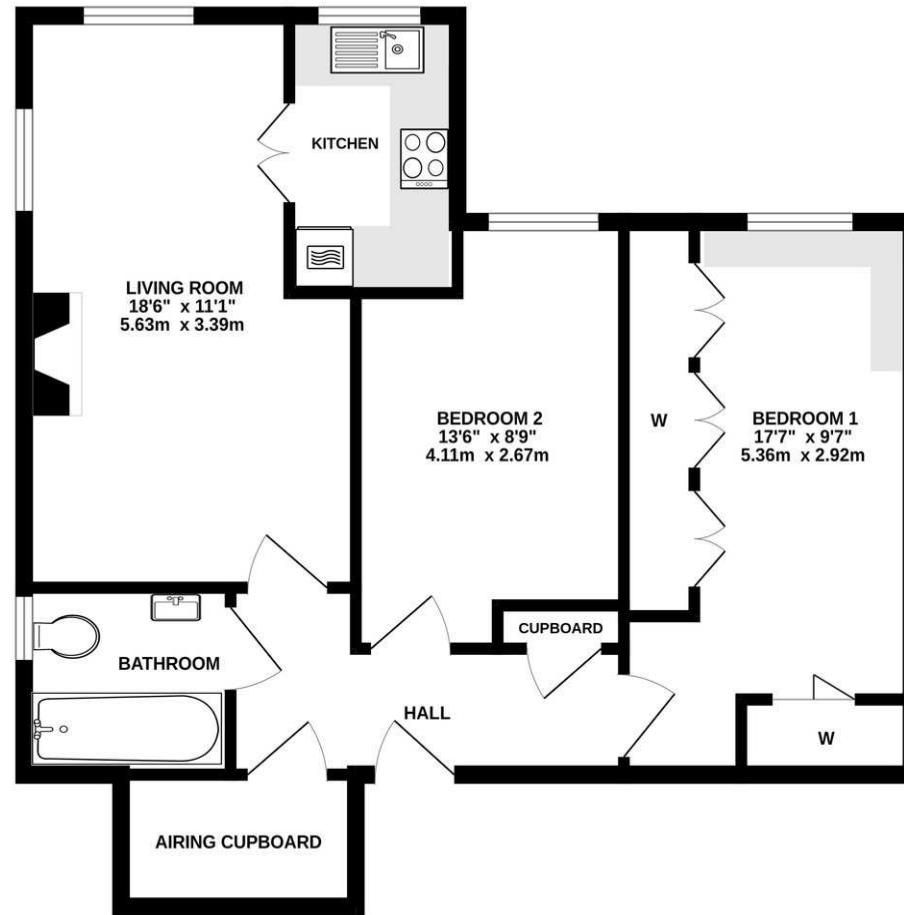
Insight

Offered for sale with no onward chain is this spacious and tastefully decorated two-bedroom, top floor, retirement apartment, filled with natural light and offering views over the communal gardens and towards Glastonbury Tor. Set within the popular Bluestone Court development, just a level stroll from Clarks Village and town centre amenities.

- Enjoying a well-proportioned living room featuring an electric feature fireplace and ample space to accommodate both living and dining furniture.
- Modern, well-appointed kitchen with a range of wall, base and drawer units, featuring integrated fridge, freezer, oven and electric hob.
- Two generously sized bedrooms, with the master offering extensive built-in wardrobes and drawer units, providing excellent storage.
- Stylish contemporary bathroom featuring a bath with rainfall shower over, sleek vanity unit with basin, and modern Japanese WC.
- Bluestone Court provides secure entry to the grounds and building, beautifully landscaped gardens with wide pathways, and a superb calendar of social events for residents who wish to join in.
- Residents parking is available on-site and conditions are in place which can be discussed with the House Manager. There is also storage for a mobility scooter if required.



TOP FLOOR
655 sq.ft. (60.8 sq.m.) approx.



TOTAL FLOOR AREA : 655 sq.ft. (60.8 sq.m.) approx.

Whilst every attempt has been made to ensure the accuracy of the floorplan contained here, measurements of doors, windows, rooms and any other items are approximate and no responsibility is taken for any error, omission or mis-statement. This plan is for illustrative purposes only and should be used as such by any prospective purchaser. The services, systems and appliances shown have not been tested and no guarantee as to their operability or efficiency can be given.
Made with Metropix ©2025

DISCLAIMER

CONSUMER PROTECTION FROM UNFAIR TRADING REGULATIONS 2008. The Agent has not tested any apparatus, equipment, fixtures and fittings or services and so cannot verify that they are in working order or fit for the purpose. A Buyer is advised to obtain verification from their Solicitor or Surveyor. References to the Tenure of a Property are based on information supplied by the Seller. The Agent has not had sight of the

title documents. A Buyer is advised to obtain verification from their Solicitor. Items shown in photographs are not included unless specifically mentioned within the sales particulars. They may however be available by separate negotiation. Buyers must check the availability of any property and make an appointment to view before embarking on any journey to see a property.

DATA PROTECTION. Personal information provided by customers wishing to receive information and/or services from the estate agent and the Property Sharing Experts (of which it is a member) for the purpose of providing services associated with the business of an estate agent but specifically excluding mailing or promotions by a third party. If you do not wish your personal information to be used for any of these purposes, please notify us.