



**BerkeleyShaw**

## Lockfields View Eldonian Village, Liverpool, Merseyside L3 6LW

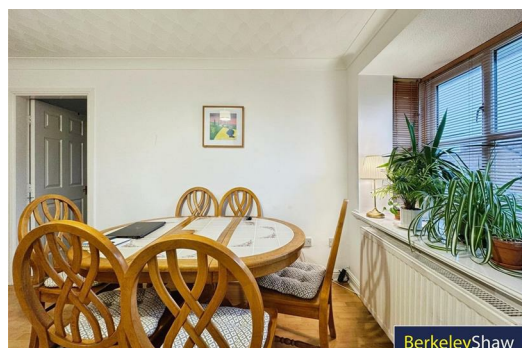
**£850 Per Month**

Berkeley Shaw are delighted to offer this two bedroom ground floor apartment on Lockfields View. Situated in the Eldonian Village this property is ideally located near to the City Centre and has a wide range of amenities and transport links in close proximity. The property benefits from double glazing, gas central heating, off road parking and is entered via private access on the ground floor. The apartment comprises lounge/dining area, kitchen, two bedrooms and a family bathroom. Viewings are highly recommended.

Council Tax band: B  
Deposit: £980




**BerkeleyShaw**




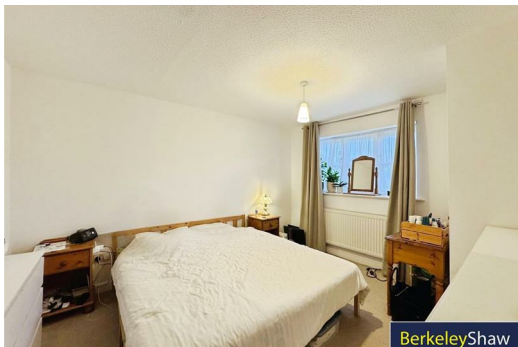
**BerkeleyShaw**



**BerkeleyShaw**

Energy Efficiency Rating		
	Current	Potential
Very energy efficient - lower running costs		
(92 plus) <b>A</b>		
(81-91) <b>B</b>		
(69-80) <b>C</b>	75	75
(55-68) <b>D</b>		
(39-54) <b>E</b>		
(21-38) <b>F</b>		
(1-20) <b>G</b>		
Not energy efficient - higher running costs		
EU Directive 2002/91/EC 		

Environmental Impact (CO <sub>2</sub> ) Rating		
	Current	Potential
Very environmentally friendly - lower CO <sub>2</sub> emissions		
(92 plus) <b>A</b>		
(81-91) <b>B</b>		
(69-80) <b>C</b>		
(55-68) <b>D</b>		
(39-54) <b>E</b>		
(21-38) <b>F</b>		
(1-20) <b>G</b>		
Not environmentally friendly - higher CO <sub>2</sub> emissions		
EU Directive 2002/91/EC 		



Berkeley Shaw Estate Agents Limited.  
Company No. 0784754

Berkeley Shaw Real Estate Limited.  
Company No. 05206927

