



Clanricarde Gardens, W2

£2,000 Per week

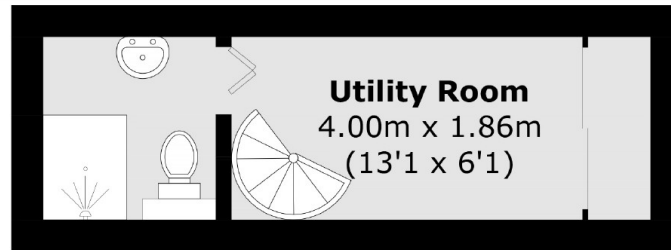
This large split level studio apartment is situated within a well maintained period conversion. The property has high ceilings, a separate kitchen and a separate sleeping area.

Located moments from Notting Hill Gate station, Hyde Park and Portobello Road with its wide variety of fashionable bars, restaurants & shops close by.

Features

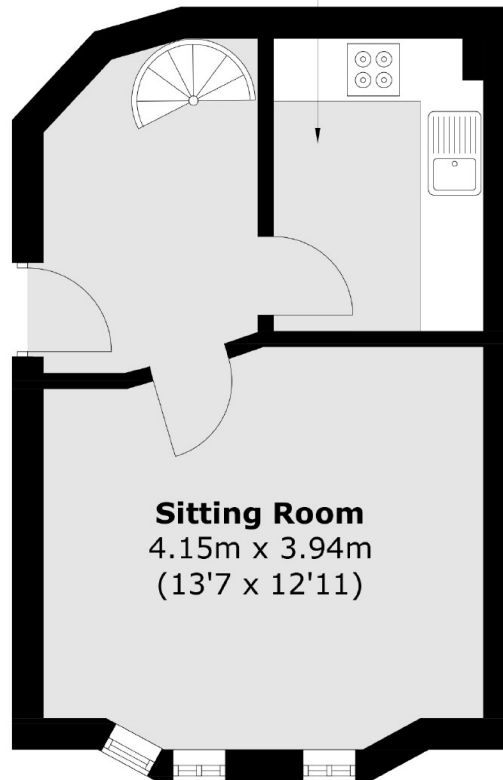
- Studio Apartment
- Raised Ground Floor
- Split Level
- High Ceilings
- Separate Kitchen

Clanricarde Gardens, London, W2



First Floor

Kitchen
2.82m x 2.00m
(9'3 x 6'7)



Ground Floor

Total area (approx.): 37.8 sq. m (406.9 sq. ft)