



Coleridge Gardens, SW10

£750,000

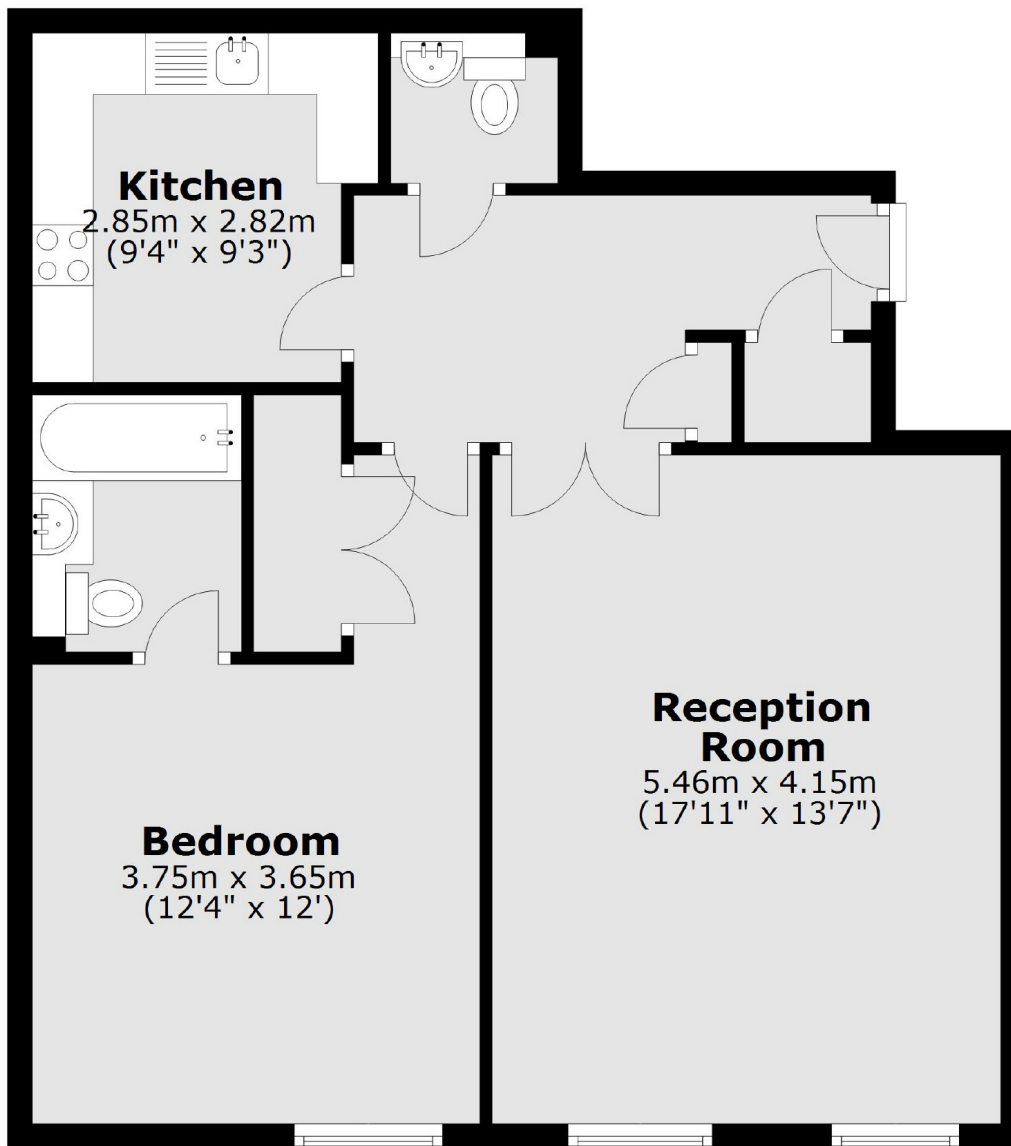
A one bedroom apartment measuring close to 700sqft with a secure parking space and a share of the freehold. This property has excellent proportions, plenty of natural light and has worked very well as a rental investment for the current owner.

Coleridge Gardens is a private development boasting a gym, communal gardens and a swimming pool, ideally located between the Kings Road and Fulham Road with shops, transport links and restaurants close by.

Features

- Share of Freehold
- Lift
- Secure Parking Space
- Gym & Swimming Pool
- Porters
- Gated Development

Coleridge Gardens, London, SW10



Second Floor

Total area: approx. 63.3 sq. metres (681.0 sq. feet)

Dexters

Chelsea and Belgravia
45 Sloane Avenue
London
SW3 3DH
Sales
020 7590 9510

Energy Rating: C. We aim to make our particulars both accurate and reliable. However they are not guaranteed; nor do they form part of an offer or contract. If you require clarification on any points then please contact us, especially if you're traveling some distance to view. Please note that appliances and heating systems have not been tested and therefore no warranties can be given as to their good working order.

 **RICS** | Regulated
Estate Agent
and Letting Agent

[dexters.co.uk](https://www.dexters.co.uk)