



- A smart, semi-detached bungalow offered for sale with no onward chain
- Roomy lounge with bespoke fitted cabinets, opening into a conservatory
- Attractive fitted kitchen with integrated appliances, overlooking garden
- Two bedrooms both with fitted wardrobes and modern fully tiled wet room
- Extensive private parking to front and side and a large garage
- Fully enclosed and private south westerly facing garden



"A smart two-bedroom bungalow which enjoys an enclosed south-westerly facing garden, extensive private drive, good sized garage and is offered for sale with no onward chain".

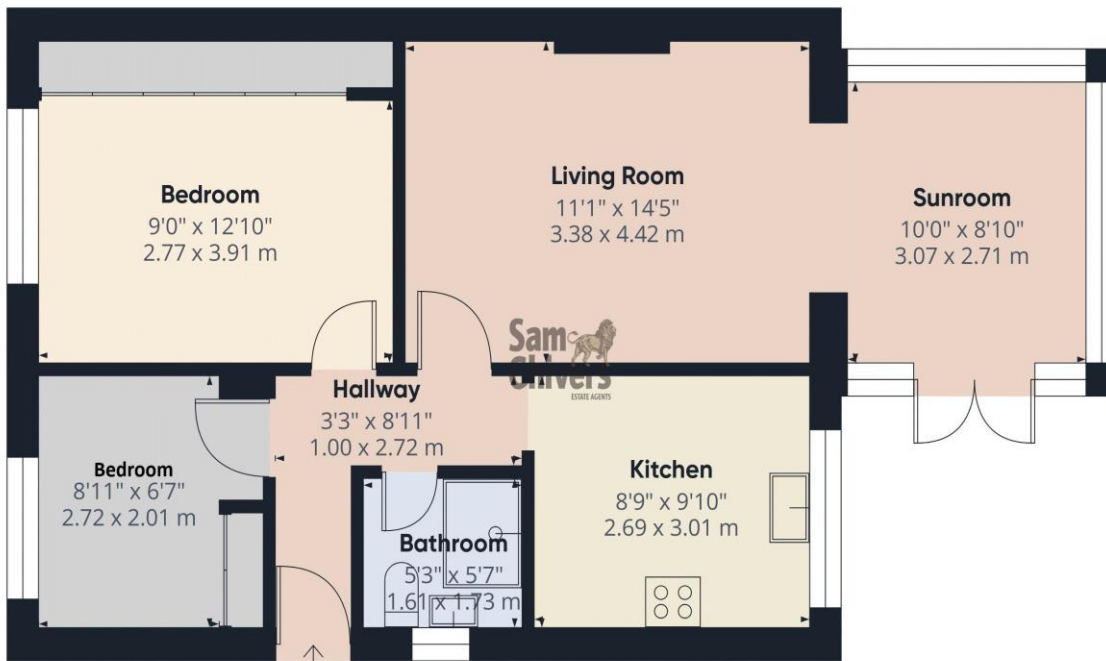
The accommodation comprises entrance hallway. Light and airy lounge with bespoke fitted oak units with a cosmetic fireplace, opening into a conservatory with doors onto garden. Attractive fitted kitchen overlooking garden with a good range of units and integrated appliances. There are two bedrooms both with fitted wardrobes. Modern fully tiled wet room. Mains gas central heating and upvc double glazing.

Outside to front is a level gravelled garden providing additional parking. Private side drive leading to a good-sized garage with power & lighting. The private rear garden is fully enclosed, mainly paved with mature shrub planting thus requiring minimal maintenance and enjoying a sunny south-westerly aspect.

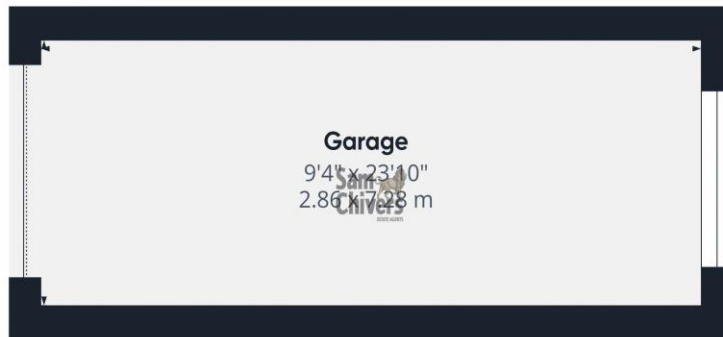
Tenure: Freehold.

Council Tax Band: C.





Floor 0 Building 1



Floor 0 Building 2

Approximate total area⁽¹⁾
867 ft²
80.7 m²

(1) Excluding balconies and terraces

Calculations reference the RICS IPMS 3C standard. Measurements are approximate and not to scale. This floor plan is intended for illustration only.

GIRAFFE360

Find us online!



www.samchiversproperty.co.uk



Facebook: Sam Chivers Estate Agents



Instagram: @samchiversestateagents

rightmove Zoopla

Score	Energy rating	Current	Potential
92+	A		
81-91	B		82 B
69-80	C		
55-68	D	66 D	
39-54	E		
21-38	F		
1-20	G		

Sam Chivers Estate Agents can also provide mortgage and conveyancing recommendations should you require such a service. Please contact our office on:

01761 411020 or email us at sales@samchiversproperty.co.uk

These sales particulars provide an approximate guide and form no part of a contract. It is the purchaser's responsibility to satisfy themselves that the property has been accurately described and that all fixtures and apparatus are functioning correctly. Your home may be at risk if you do not keep up repayments secured against it.