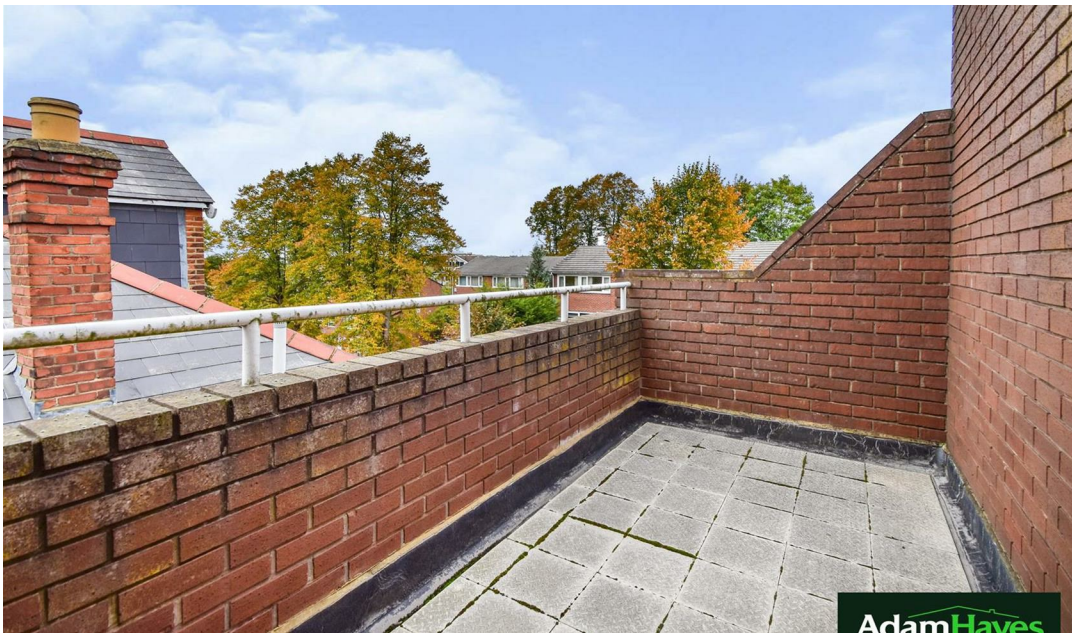
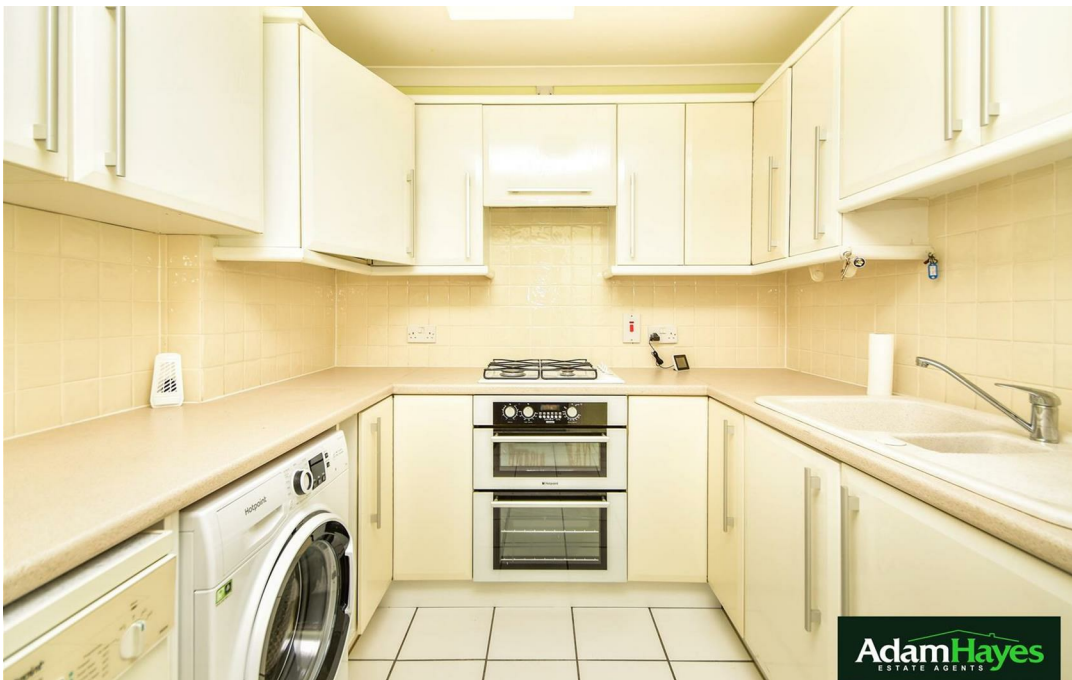




Crown Lodge, Salisbury Avenue, N3 3AF

£500,000



 2  2  2



Adam Hayes - Finchley Central Office - Sales 348 Regents Park Road, Finchley Central, London, N3 2LJ
Tel: 0208 189 6333 Email: info@adam-hayes.co.uk Web: www.adam-hayes.co.uk

Crown Lodge, Salisbury Avenue, N3 3AF

£500,000

 2 Bedrooms  2 Bathrooms  2 Receptions

Key Features

- Spacious Two Bedroom Flat
- Lift Access
- Two Bathrooms
- Two Receptions
- Guest WC
- Underground Parking
- Popular Location

Nearest Stations

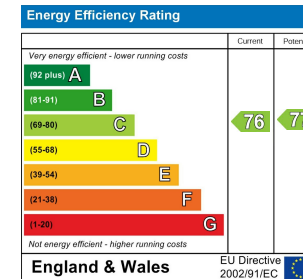
-
-
-

Property Description

Located in the heart of Finchley Central, with convenient access to Finchley Central Tube Station and local amenities, is this two-bedroom, two-bathroom second-floor purpose-built apartment. The property features two interconnecting lounges, two balconies, a guest WC, an en-suite bathroom, an additional en-suite shower room, allocated underground parking, lift access, and communal gardens. To fully appreciate the size, condition, and prime location, an internal viewing is highly recommended through the vendor's sole agents, Adam Hayes Estate Agents.

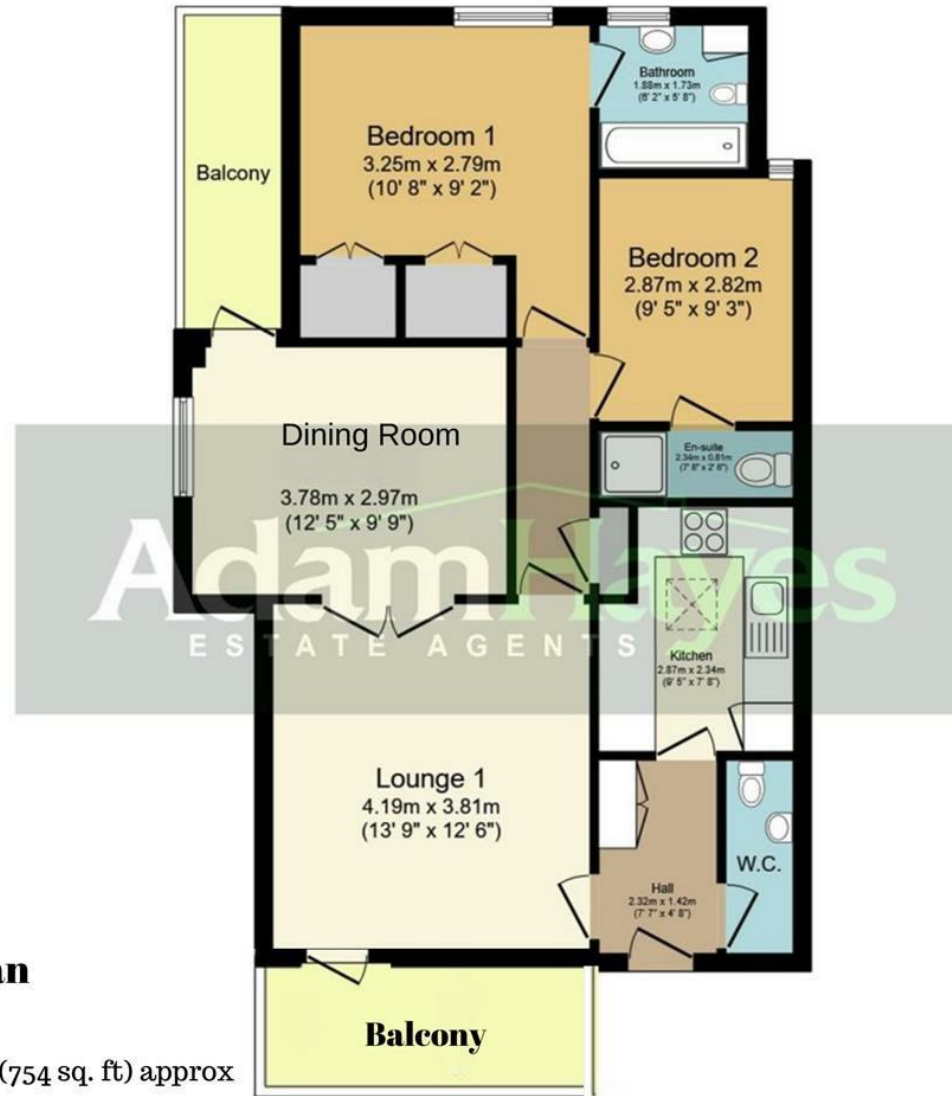
Other Information

Tenure: Leasehold - Share of Freehold
Length of Lease: n/a
Ground Rent: n/a
Service Charge: n/a
Service Review Period: n/a
Council Tax Band: E



Adam Hayes - Finchley Central Office - Sales 348 Regents Park Road, Finchley Central, London, N3 2LJ

Tel: 0208 189 6333 Email: info@adam-hayes.co.uk Web: www.adam-hayes.co.uk



Floorplan

Total floor area 70.1 sq.m. (754 sq. ft) approx

This plan is for illustration only and may not be representative of the property. Plan not to scale

These particulars, whilst believed to be accurate, are set out as a general outline only for guidance and do not constitute any part of an offer or contract. Intending purchasers or prospective tenants should not rely on them as statements or representation of fact, but must satisfy themselves by inspection or otherwise as to their accuracy. We have not carried out a detailed survey, not tested the services, appliances and specific fittings. Room sizes should not be relied upon for carpets and furnishings. The measurements given are approximate. No person in this firm's employment has the authority to make or give any representation or warranty in respect of the property.