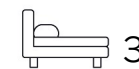




Living
made
better

The Oxygen
Royal Victoria Dock, E16 1BQ



Asking Price £775,000

The Oxygen, Royal Victoria Dock, E16 1BQ

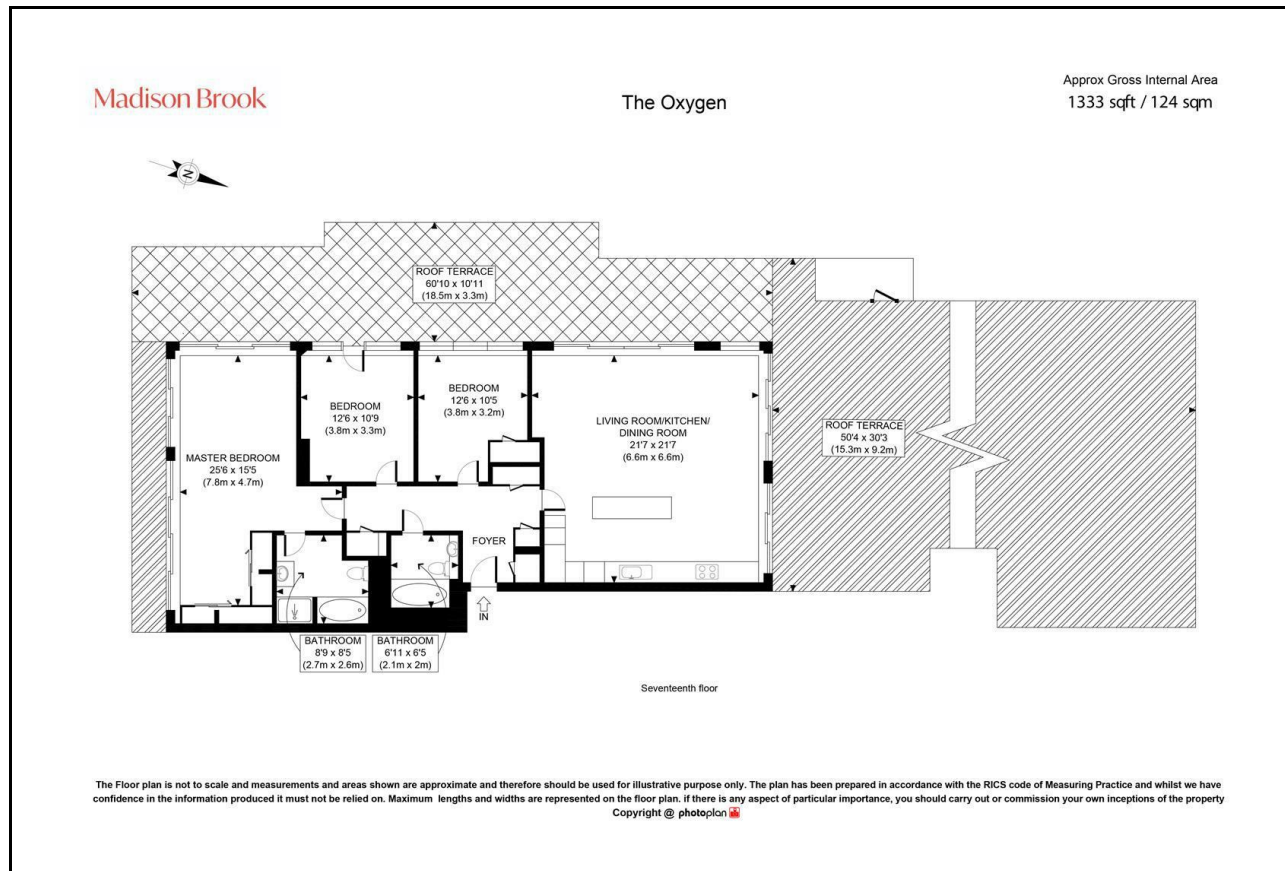
Madison Brook

Property Summary

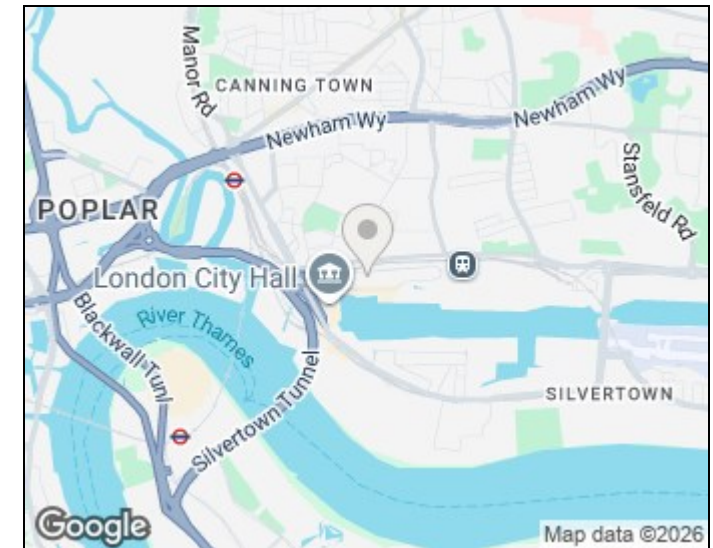
A spectacular three-bedroom apartment set on a high floor within The Oxygen, offering approximately 1,333 sq ft of high specification living space and an exceptional private roof terrace. Enjoying far-reaching views across Royal Victoria Dock, the River Thames, The O2 and the City skyline, the property also benefits from a separate wrap-around balcony and excellent connectivity to Royal Victoria DLR and the Elizabeth Line.

Lease Length: 169 years | Service Charge: £8,389,08 pa | Ground Rent: £800 pa

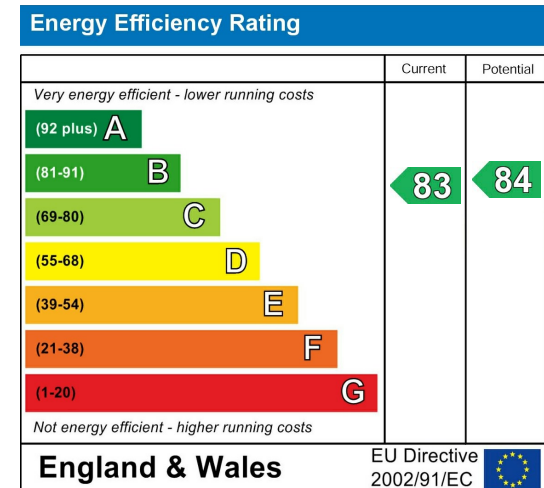
Floorplan



Area Map



Energy Efficiency Graph



These particulars, whilst believed to be accurate are set out as a general outline only for guidance and do not constitute any part of an offer or contract. Intending purchasers should not rely on them as statements of representation of fact, but must satisfy themselves by inspection or otherwise as to their accuracy. No person in this firm's employment has the authority to make or give any representation or warranty in respect of the property.

Unit B 20 Western Gateway, Royal Victoria
Dock, London, E16 1BS
Tel: 020 3946 6000 Email:
docklands@madisonbrook.com
<https://madisonbrook.com/>