



41 Taylforth Close, Liverpool, L9 2DP

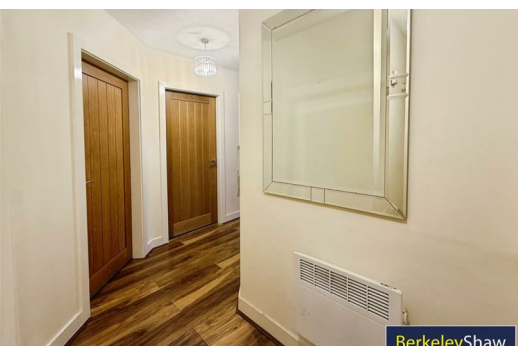
£900 PCM

Welcome to this charming ground floor apartment TO LET located on Taylforth Close in the vibrant city of Liverpool. This delightful property features two well-proportioned bedrooms, making it an ideal choice for couples, small families, or individuals seeking a comfortable living space. The apartment boasts a spacious reception room, perfect for relaxing or entertaining guests.

The well-appointed bathroom adds to the convenience of this home, ensuring that all your daily needs are met with ease. One of the standout features of this property has off road parking in a communal car park with space for one vehicle, a valuable asset in a bustling urban area.

Situated close to excellent transport links, this apartment offers easy access to the wider city and beyond, making commuting a breeze. Whether you are heading to work or exploring the local attractions, you will find that this location is both practical and desirable.

Council Tax band: A
Deposit: £900
Minimum Term: 12 Months



Hallway

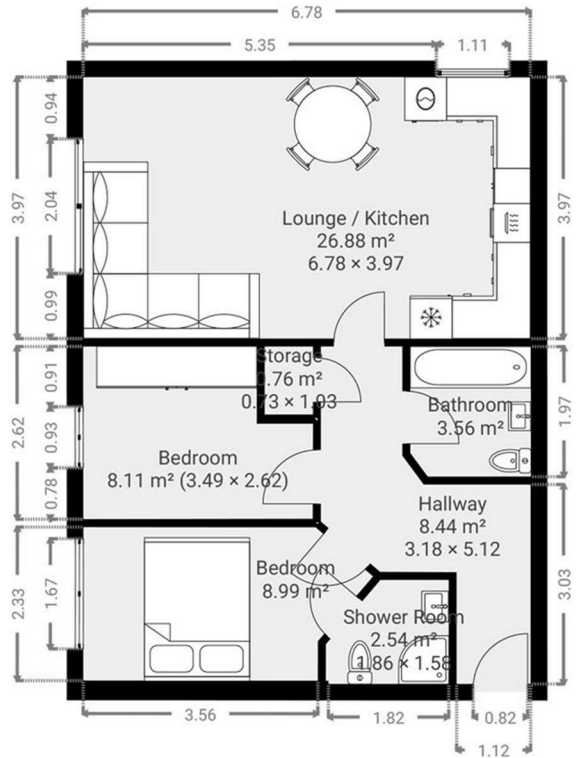
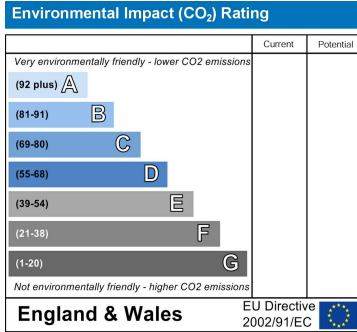
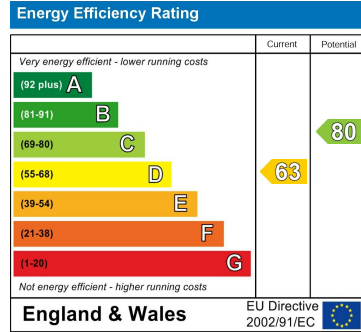
Lounge Kitchen

Bedroom 1

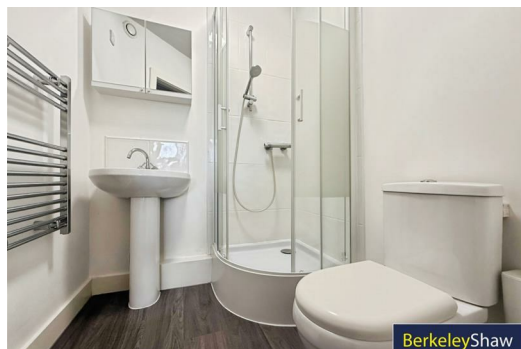
Ensuite Shower Room

Bedroom 2

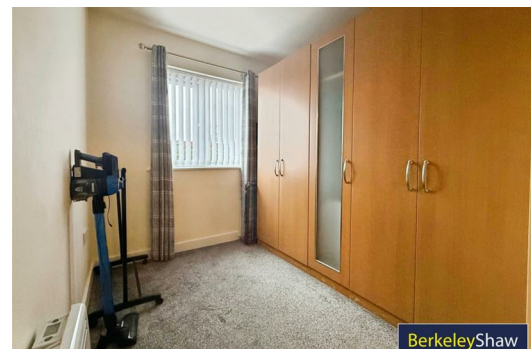
Bathroom



BerkeleyShaw



BerkeleyShaw



BerkeleyShaw



Berkeley Shaw Estate Agents Limited.
Company No. 0784754

Berkeley Shaw Real Estate Limited.
Company No. 05206927

