



JON KEYTE

exp[®] UK

@ jon.keyte@exp.uk.com

🌐 jonkeyte.exp.uk.com

☎ 07445 265 314

Mallard Close, Kingsteignton, Newton Abbot, TQ12 3FT

Guide Price £350,000

🛏️ 3 🚿 2 🚗 1



- Please Quote Ref JK1243
- Built by Redrow Homes on Popular Moorlands Reach Development
- Open Plan Living Accommodation
- Tucked Away Cul-de-Sac Position
- Southerly Facing Rear Garden
- Super Detached Family Home
- Three Bedrooms
- Useful Cloakroom & En-Suite Shower Room
- Garage & Driveway
- No Onward Chain



exp UK



exp UK



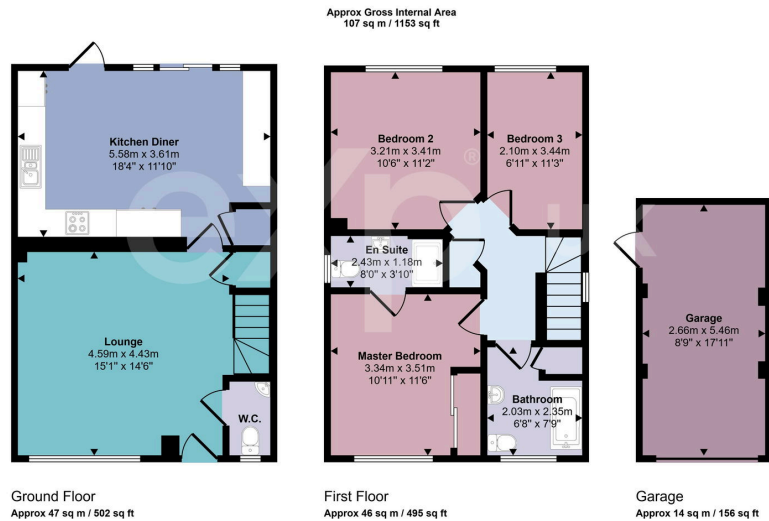
exp UK



exp UK

***** Guide Price £350,000 - £375,000 *****

Please Quote Ref JK1243 - Located on the popular Moorlands Reach development in Kingsteignton, this attractive three-bedroom detached home built by Redrow Homes offers modern family living in a sought-after location close to local schools, including Teign School, and excellent commuter links via the A380. The property features a light and airy open-plan layout with a spacious lounge to the front and a contemporary fitted kitchen/diner overlooking the south-facing garden. Outside, you'll find a garage and driveway to the side, plus a beautiful patio with a covered entertaining area, perfect for year-round use. Offered to the market with no onward chain, this stylish and well-presented home is ready to move straight into.



This floorplan is only for illustrative purposes and is not to scale. Measurements of rooms, doors, windows, and any items are approximate and no responsibility is taken for any error, omission or mis-statement. Icons of items such as bathroom suites are representations only and may not look like the real items. Made with Made Snappy 360.

