

Cardigan Road, TW10

£550,000

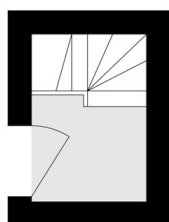
This fantastic two bedroom apartment is located on the top floor of this Victorian building at the top of Richmond Hill. The property comprises a modern open plan kitchen/reception room with integrated appliances with natural light. The principal double bedroom benefits from ample built-in storage and an en-suite WC, while a second well-proportioned bedroom is served by a modern family bathroom.

Richmond Hill is a highly desirable area with local shops, restaurants and The River Thames close by. Richmond town centre is moments away offering a sophisticated array of high street shops, as well as a charming village atmosphere. There are also excellent transport links with Richmond station featuring the District line tube as well as the overland service direct into London Waterloo and road links to Heathrow Airport. Local schools enjoy an excellent reputation, both private and state.

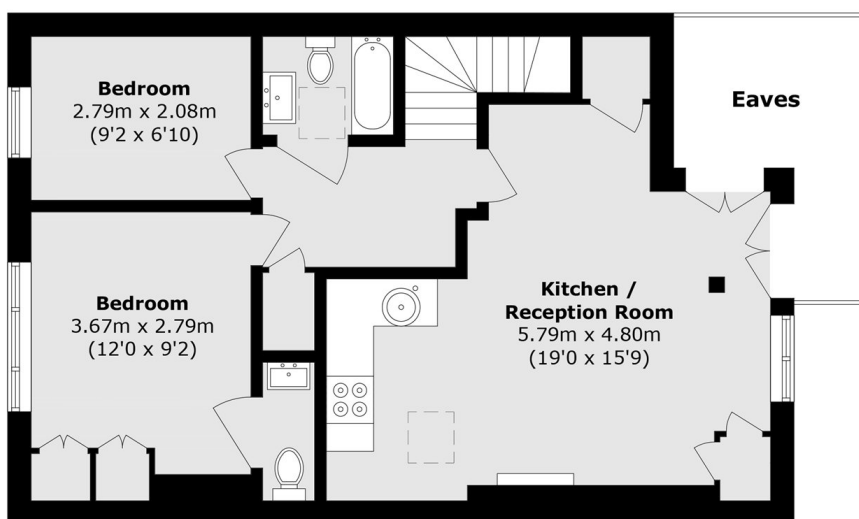
Features

- Two Bedroom
- Richmond Hill
- Victorian Conversion
- Top Floor
- Natural Light
- No Onward Chain

Cardigan Road, Richmond, TW10



Third Floor



Fourth Floor

Total area (approx.): 55.4 sq. m (596.3 sq. ft)
(Excluding Eaves)