

**44 Lelleford Close
Long Lawford
RUGBY
CV23 9FP**

£1,400 Per Month



- **THREE BEDROOM**
- **AVAILABLE MID JULY**
- **THREE STOREY**
- **ENSUITE FACILITIES**
- **SINGLE GARAGE**

- **SEMI DETACHED**
- **UNFURNISHED**
- **KITCHEN WITH APPLIANCES**
- **CLOAKROOM / W.C.**
- **ENERGY EFFICIENCY RATING B**

To arrange a viewing call us today on 01788 550044 or visit www.horts.co.uk



PERSONAL • PROFESSIONAL • PROACTIVE

****AVAILABLE MID JULY**** A spacious three bedroom semi detached property with accommodation set over three floors. Benefiting from lounge, kitchen with built in appliances and downstairs cloakroom. To the first floor there are two bedrooms and a family bathroom. To the second floor there is a master bedroom with dressing area and ensuite facilities. Externally there are front and rear gardens and garage with an additional kitchenette area and further w.c. ****UNFURNISHED****

Accommodation Comprises

Entry via composite door into:

Entrance Hallway

Tiled floor. Stairs rising to first floor landing. Radiator. Door to:

Lounge

11'10" x 13'8" (3.61m x 4.18m)

Tiled floor. Two radiators. Understairs storage cupboard. Window to front aspect. Further door to:

Kitchen / Diner

12'6" x 11'11" (3.83m x 3.64m)

Fitted with a range of high gloss white base and eye level units with granite work surface space incorporating a bowl and a half stainless steel sink unit with mixer tap over. Built in appliances include built in halogen hob, built in single oven, fridge/freezer, dishwasher. Radiator. Tiled floor. Inset spotlights. Twin fully glazed doors leading to rear garden. Archway through to:

Utility Area

Space and plumbing for a washing machine. Work surface space. Eye level unit housing central heating boiler. Inset spotlights. Tiled floor. Radiator. Door to:

Cloakroom / WC

Wall mounted wash hand basin and low level w.c. Tiled floor. Half height tiling to walls. Extractor fan. Radiator.

First Floor Landing

Stairs rising to second floor. Cupboard housing hot water cylinder. Window to front aspect. Radiator. Doors off to bedrooms and bathroom.

Bedroom Two

12'6" x 8'7" (3.83m x 2.64m)

Window to rear. Radiator. Built in wardrobe with sliding doors.

Bedroom Three

9'11" x 11'10" (3.03m x 3.61m)

Window to front. Radiator. Built in wardrobes with sliding doors.

Bathroom

With four piece white suite to comprise; shower cubicle with mixer shower, panelled bath, wall mounted wash hand basin and low level w.c. Tiled floor. Tiled walls. Towel radiator. Electric shaver point. Inset spotlights. Extractor fan Frosted window to rear elevation.

Second Floor Landing

Door to:

Bedroom One

19'5" x 11'10" (5.94m x 3.63m)

Window to front aspect. Built in wardrobes with sliding doors. Over stairs storage cupboard. Radiator.

Dressing Area

Window to rear aspect. Radiator. Door to:

Ensuite

With three piece suite to comprise; shower cubicle with mixer shower, wall mounted wash and basin and low level w.c. Tiled floor. Tiling to splash areas. Half height tiling to walls. inset spotlights. Towel radiator. Extractor fan. Skylight window.

Front Garden

Pathway to entrance. Flower and shrub borders. Driveway to side giving off road parking for two vehicles and leading to:

Garage

With up and over style door. Power and light connected. Door to kitchenette area and toilet.

Kitchenette

With base and eye level units. Sink unit.

Toilet

Low level w.c. Wall mounted wash hand basin. Further eye level unit. Service door to garden.

Rear Garden

Paved patio area with flower, shrub and evergreen borders. Timber panel fencing to boundaries. Side pedestrian access.

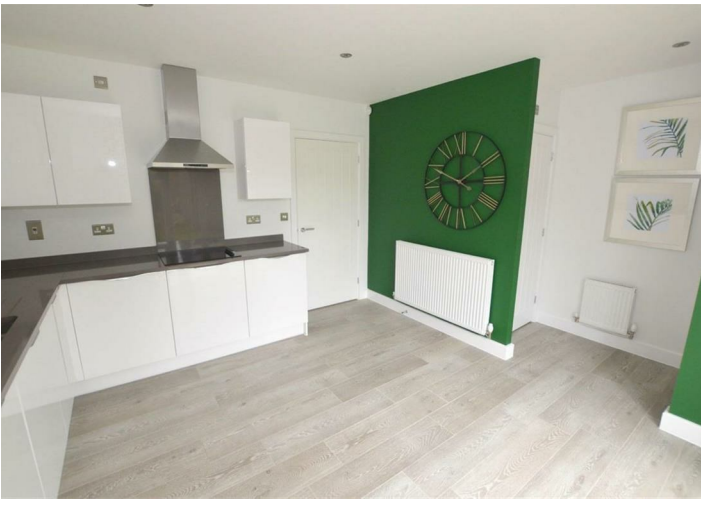
Agents Note

Deposit: £1615.38

Local Authority: Rugby

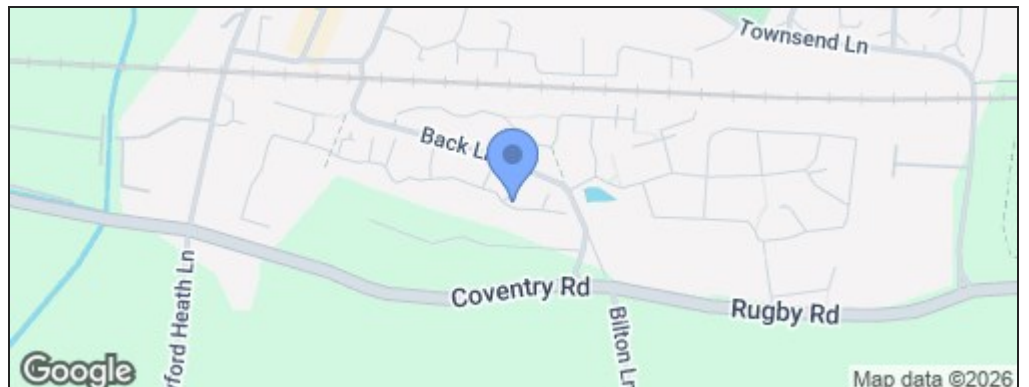
Council Tax Band: D

Energy Efficiency Rating: B





Energy Efficiency Rating		
	Current	Potential
Very energy efficient - lower running costs		
(92 plus) A		95
(81-91) B	86	
(69-80) C		
(55-68) D		
(39-54) E		
(21-38) F		
(1-20) G		
Not energy efficient - higher running costs		
England & Wales	EU Directive 2002/91/EC	



Disclaimer

These particulars, whilst believed to be accurate are set out as a general outline only for guidance and do not constitute any part of an offer or contract. Intending purchasers should not rely on them as statements or representation of fact, but must satisfy themselves by inspection or otherwise as to their accuracy. We have not carried out a detailed survey nor tested the services, appliances and specific fittings. Room sizes should not be relied upon for carpets and furnishings. The measurements given are approximate. No person in this firm's employment has the authority to make or give any representation or warranty in respect of the property.