



West Smithfield, EC1A

£2,250 Per calendar month

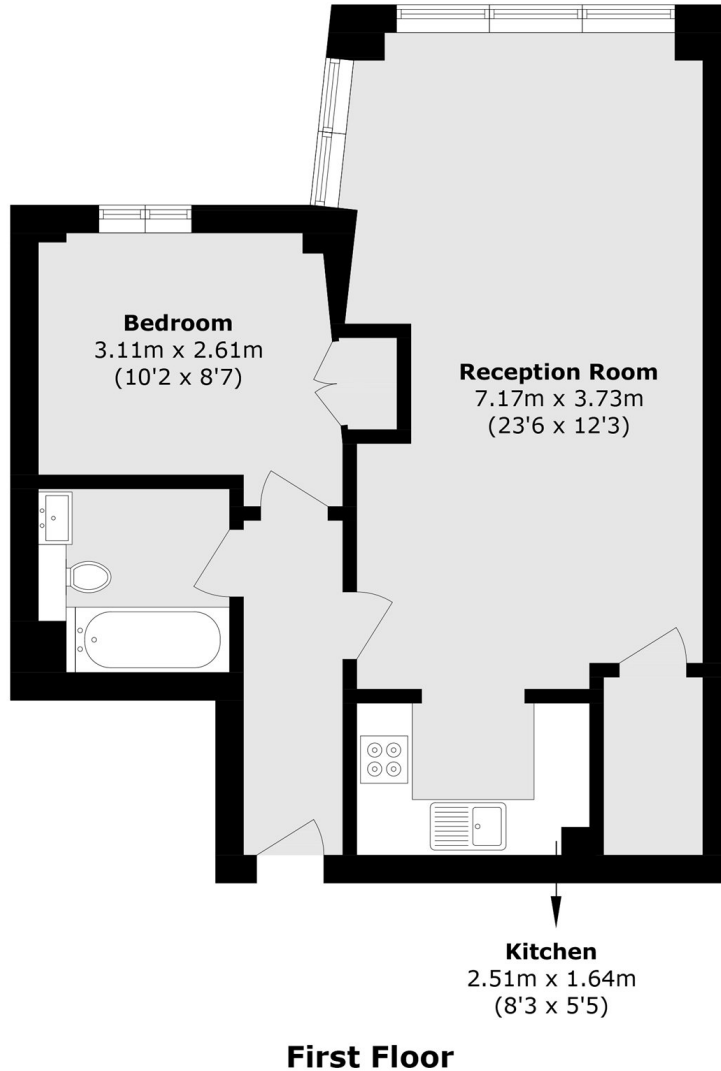
Large one bedroom apartment on the first floor of this private block located in the historic West Smithfield. Ideally located for easy access to bars, restaurants and local transport links.

The apartment is located for quick access to Barbican underground station just over a quarter mile and Farringdon Underground station just under a half mile away giving easy access to all parts of London.

Features

- Large Double Bedroom
- Furnished
- Open Plan
- Modern Kitchen
- Excellent Location
- Wooden Floors

West Smithfield,
London, EC1A



Total area (approx.): 51.9 sq. m (558.6 sq. ft)