

# HUNTERS<sup>®</sup>

HERE TO GET *you* THERE



HUNTERS<sup>®</sup>

## 65 Jewison Lane

Bridlington, YO15 1DX

Asking Price £120,000



Council Tax: A



# Beech Tree Cottage 65 Jewison Lane

Bridlington, YO15 1DX

Asking Price £120,000



Situated in the sought-after Orchard Court development, just a short drive from the picturesque village of Sewerby, this beautifully presented freehold holiday home offers a fantastic retreat with eleven-month occupancy. With no onward chain, it's the perfect opportunity for those looking for a peaceful getaway in a well-maintained setting.

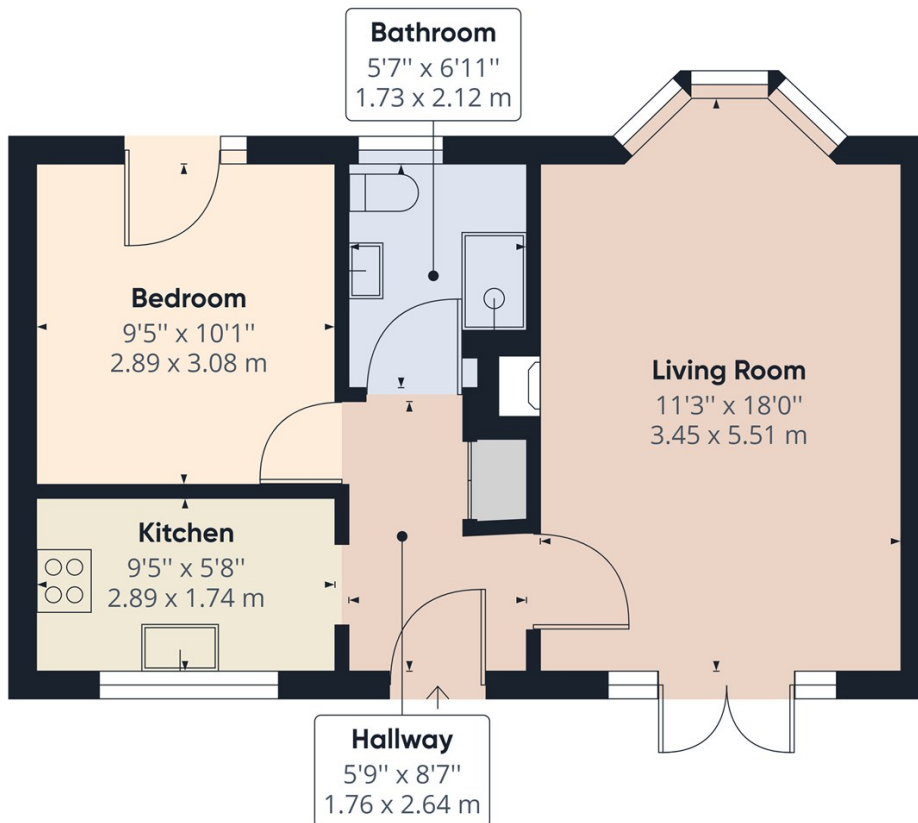
Step inside to a bright and airy hallway, leading to a modern kitchen equipped with ample storage, integrated hob, and oven—perfect for home-cooked meals after a day exploring the coast. The spacious lounge features a bay window and a feature fireplace, creating a cosy and inviting space to relax.

The double bedroom boasts fitted storage and double doors opening to the rear, adding a touch of elegance and natural light. The well-appointed bathroom includes a three-piece suite with a walk-in shower, half-tiled walls, and space for a washing machine for added convenience.

Outside, enjoy a low-maintenance rear yard, beautifully kept communal gardens, and the added bonus of an allocated parking space. Located within walking distance of a pub and restaurant, and just a short drive from the popular towns and villages of Bridlington, Flamborough, and Bampton, this property offers easy access to a range of amenities.

Whether you're seeking a peaceful holiday escape or an investment opportunity, this property is turn-key ready and perfectly situated for coastal living. Schedule your viewing today!

Tel: 01262 674252



Approximate total area<sup>(1)</sup>  
441.75 ft<sup>2</sup>  
41.04 m<sup>2</sup>

(1) Excluding balconies and terraces

While every attempt has been made to ensure accuracy, all measurements are approximate, not to scale. This floor plan is for illustrative purposes only.

GIRAFFE360

