



SAMUEL WOOD

1 Pride Hill, Alcaston, Church Stretton, SY6 6RW
Offers In The Region Of £275,000



I Pride Hill, Alcaston

Church Stretton, SY6 6RW



- Fantastic 3 Bedroomed Semi Detached Family Home
- Large Living Areas
- Large Garden with Lovely Views
- EPC Band D
- 3 Double Bedrooms
- Useful Storage Space and Utility
- Quiet Rural Location
- NO ONWARD CHAIN

Located in the tranquil village of Alcaston, Church Stretton, this charming semi-detached house offers a delightful retreat from the hustle and bustle of everyday life. With three well-proportioned bedrooms and a recently refitted bathroom, this property is perfect for families or those seeking a peaceful abode.

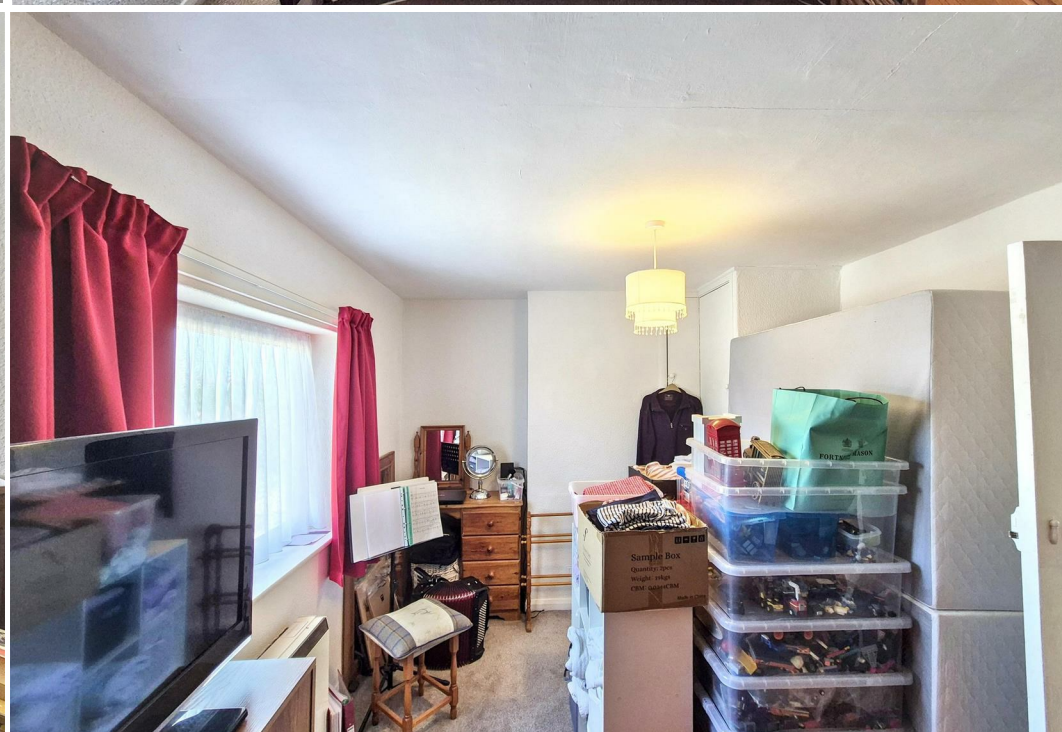
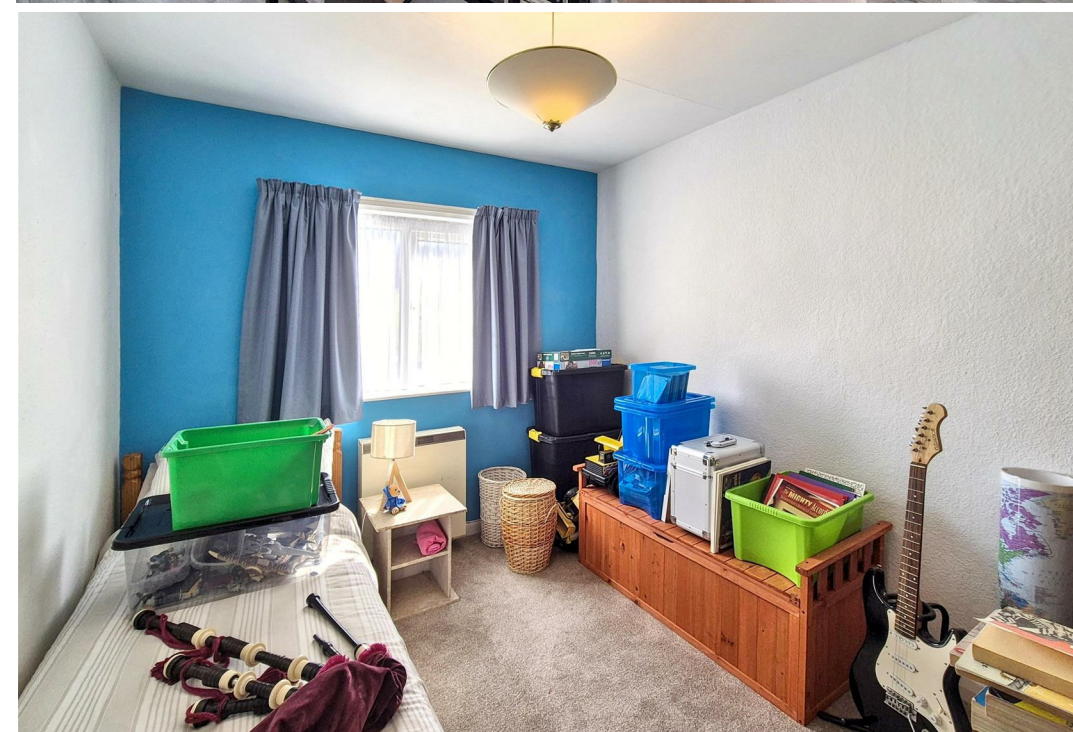
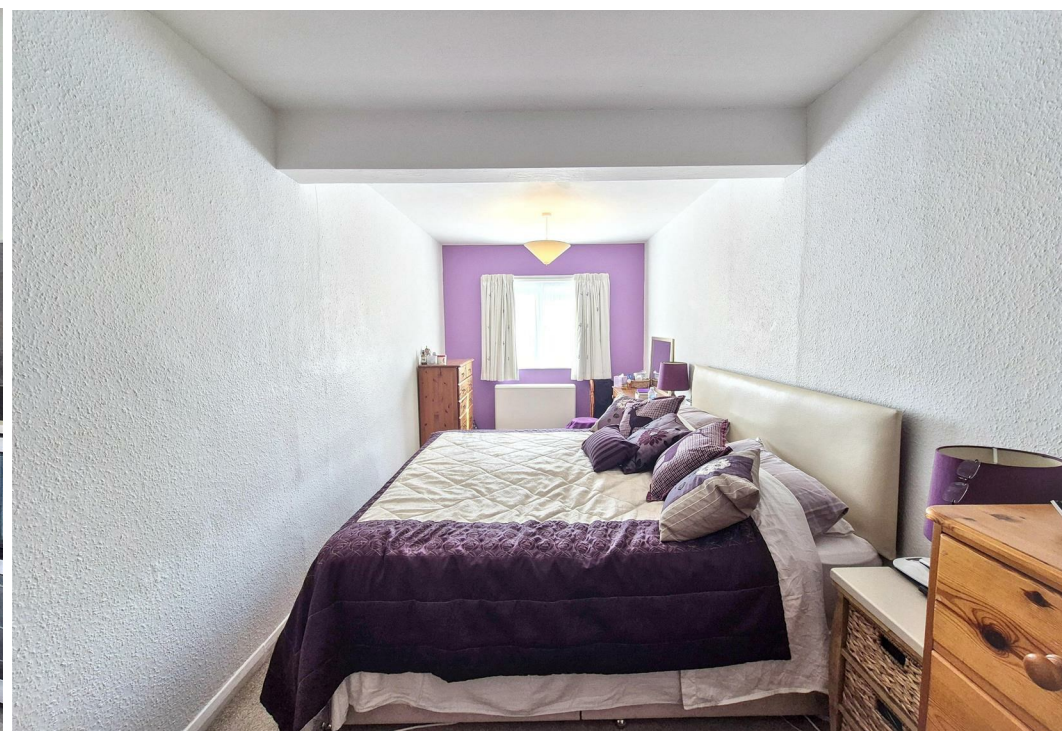
Upon entering, you are greeted by a welcoming entrance hall that leads to a spacious living and dining room. The open fire creates a warm and inviting atmosphere, ideal for cosy evenings in. The generous living areas are complemented by a convenient cupboard under the stairs, providing practical storage solutions. The heart of the home is undoubtedly the breakfast kitchen, featuring an island and stunning views of the beautifully landscaped garden at the rear, making it a perfect spot for morning coffee or family gatherings. Additionally, a useful utility room with a cloakroom adds to the functionality of the space.

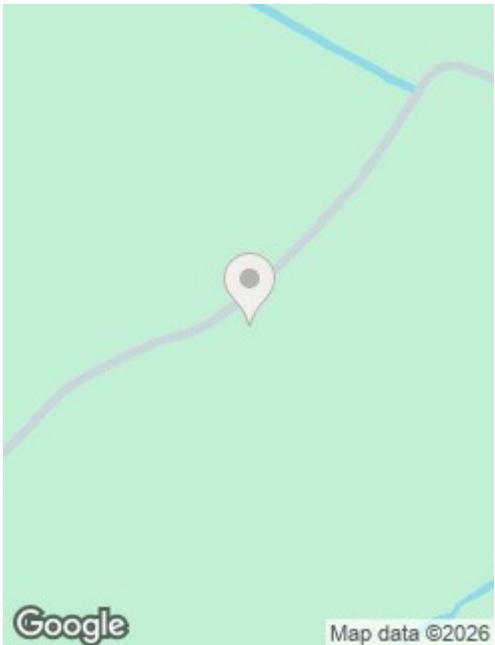
Upstairs, the three bedrooms are all capable of accommodating double beds, offering flexibility for various living arrangements. Notably, the second bedroom is particularly spacious and presents the exciting potential to be divided into two separate rooms, subject to planning permission and building regulations.

Outside, the meticulously maintained garden is a true highlight, with breath-taking, uninterrupted views of Alcaston Coppice. With parking available for up to three vehicles, this property combines convenience with the charm of rural living.

This semi-detached house is ready to move into and presents a rare opportunity to enjoy a peaceful lifestyle in a picturesque setting. Don't miss your chance to make this delightful property your new home.







Directions

Please use the what3words app to locate the property using [///dubbing.deflation.flies](https://www.what3words.com/)

Services: We understand that the property has electric storage heaters, mains electric, private water and private drainage.

Broadband Speed: Basic 14 Mbps

Flood Risk: Very Low.

Tenure: Freehold

Local Authority: Shropshire Council, The Shirehall, Abbey Foregate, Shrewsbury, Shropshire SY2 6ND. Tel 0345 678 9000

Council Tax Band: B

Mortgage Services: We offer a no obligation mortgage service through Hilltop Mortgage Solutions. Please ask a member of our team for further details.

Referral Services: Samuel Wood routinely refers vendors and purchasers to providers of conveyancing and financial services. We may receive fees from them as declared in our Referral Fees Disclosure Form.

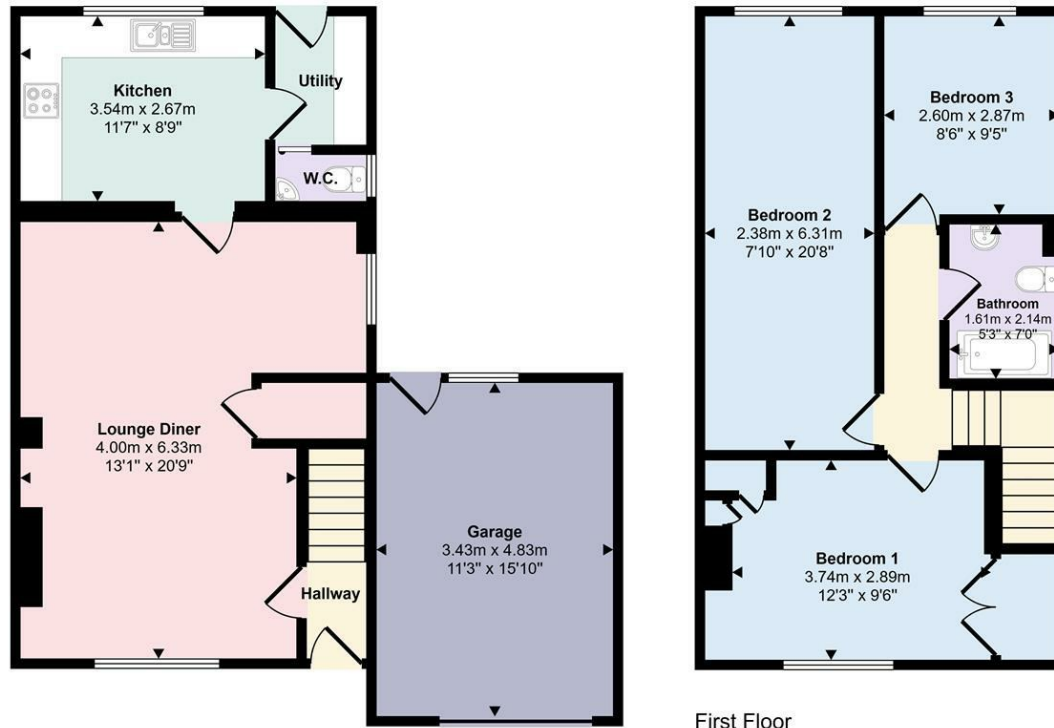
Anti-Money Laundering: To comply with these regulations, we are required to complete Anti-Money Laundering (AML) checks for all purchasers. We use Movebutler, a secure HMRC-approved platform by Credas, to make this process quick and easy on any device. A charge of £25pp will be collected by Movebutler, a link will be emailed to you when your offer has been accepted.

Viewings: Strictly by appointment only, please contact the craven arms office on 01588 672728 or email cravenarms@samuelwood.co.uk. For out of hours enquiries please contact Vicki Oldhams on 07396 879139.





Approx Gross Internal Area
111 sq m / 1200 sq ft



Ground Floor
Approx 64 sq m / 687 sq ft

First Floor
Approx 48 sq m / 513 sq ft

This floorplan is only for illustrative purposes and is not to scale. Measurements of rooms, doors, windows, and any items are approximate and no responsibility is taken for any error, omission or mis-statement. Icons of items such as bathroom suites are representations only and may not look like the real items. Made with Made Snappy 360.

We take every care in preparing our sales details. They are checked and usually verified by the Vendor. We do not guarantee appliances, alarms, electrical fittings, plumbing, showers etc. You must satisfy yourself that they operate correctly. Room sizes are approximate; they are usually taken in metric and converted to imperial. Do not use them to buy carpets or furniture. We cannot verify the tenure, as we do not have access to the legal title; we cannot guarantee boundaries or rights of way so you must take the advice of your legal representative. No person in the employment of or representing Samuel Wood has any authority to make any representation or warranty whatever in relation to this property. If there is any point which is of particular importance to you, please contact the office and we will be pleased to check the information. Do so particularly if contemplating travelling some distance to view. Applicants are advised that the majority of our shots are taken with a wide angle lens.

CONTEMPORARY AGENCY • TRADITIONAL VALUES
10 Corvedale Road, Craven Arms, Shropshire, SY7 9ND
Tel: 01588 672728 | cravenarms@samuelwood.co.uk