

45 Village Suite, £749,995*

(Other charges apply)

RICHMOND
VILLAGES

Part of Bupa

3F

2



2



EPC - B



Large Penthouse 2 Bedroom Assisted Living Apartment

Richmond Villages Cheltenham are delighted to present 45 Village Centre, a spacious two-bedroom Assisted Living apartment now available for resale. Enjoying attractive views across the beautifully landscaped village gardens, this well-appointed home benefits from direct lift access to all central village amenities, including the reception, bar and coffee lounge, library, wellness spa, and several outdoor terraces.

Specification

- Generous open-plan living/dining room featuring a remote-controlled electric fire with Bath-stone-effect surround and double-glazed sliding doors opening onto a private balcony with views of trees and well-stocked gardens.
- Modern fitted kitchenette with laminate work surfaces, stainless steel sink and drainer, and integrated appliances including a microwave and fridge.
- Two bedrooms, one with fitted wardrobes, both benefitting from en-suite wet rooms.
- En-suite wet room including a large walk-in shower area with glazed screen, white sanitaryware including low-level WC and wash hand basin set within a fitted vanity unit, wall mirror, and full-height tiling.
- Spacious entrance hall with storage.
- Allocated off-road parking for one car.
- Council Tax Band: G - Cheltenham Borough Council.
- Orientation: South-west facing
- Well stocked flower borders and lawns maintained by the Village Gardeners.

*Satellite subscription not included.

Important Notice: These particulars are intended to give a fair and substantially correct overall description. Other fees and charges apply, please contact the Village Advisers for further details. Properties are sold on a 125 year lease and this property has 120 years remaining. CGI imagery is used and is not representative of the property for resale.

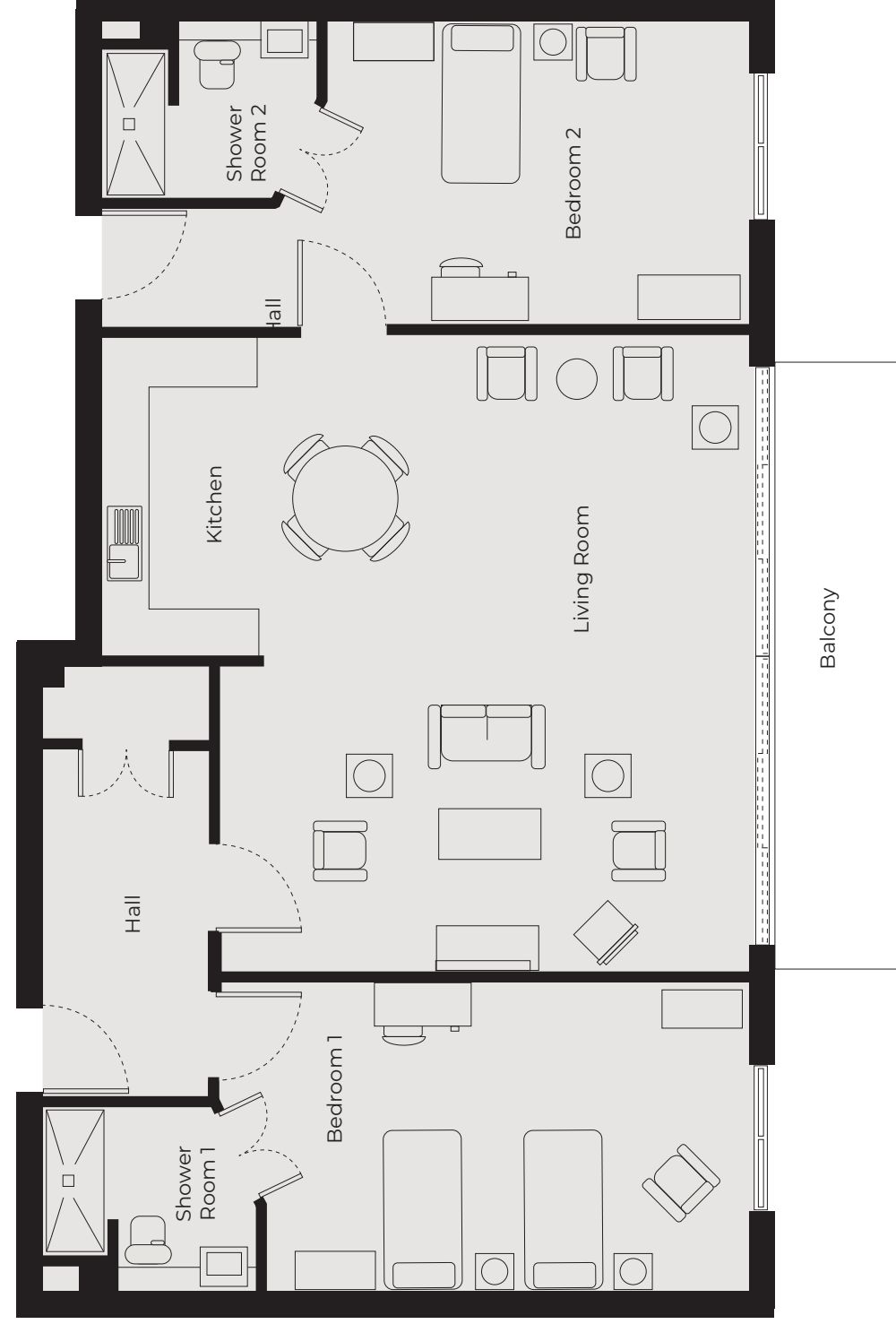
01242 474 333

cheltenham@richmond-villages.com

Richmond Villages Cheltenham,
Hatherley Lane, Cheltenham, Gloucestershire GL51 6PN

Apartment 45

Third Floor | 118.48m² – 1275ft²



- Kitchenette**
3800mm x 1910mm
12'5" x 6'3"
- Living Room**
7540mm x 6280mm
24'7" x 20'6"
- Bedroom 1**
5760mm x 3650mm
18'9" x 11'9"
- Shower Room**
2500mm x 2120mm
8'2" x 6'11"
- Bedroom 2**
5060mm x 3650mm
16'6" x 11'9"
- Shower Room**
2500mm x 2120mm
8'2" x 6'11"
- Balcony**
7500mm x 1800mm
24'6" x 5'9"

These particulars are intended to give a fair and substantially correct overall description. Measurements have been taken at 1500mm skirting height.

All dimensions are approximate. Bedroom measurements include the wardrobe if applicable. Room measurements include bay windows if applicable.

Furniture layout is to give an indicative impression. Although all efforts have been made to ensure its accuracy at time of print dimensions, fixtures, fittings, finishes and specifications are subject to change without notice.

The properties are sold unfurnished.

