



EDGWARE ROAD, W2

£750,000

Three bedrooms
Three bathrooms
24 hr porter
Third floor with lift
Central location
Hyde park

@marshandparsons
marshandparsons.co.uk

MARSH &
PARSONS



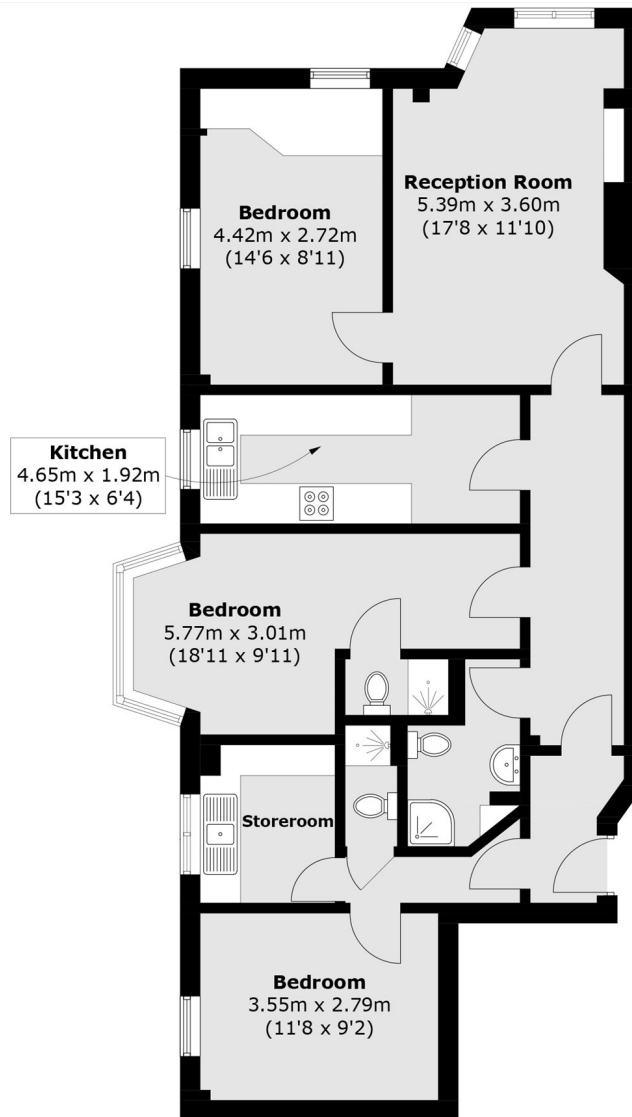
ABOUT THE PROPERTY

A spacious three-bedroom, three bathroom apartment situated on the third floor of the popular Park West development, with lift access and porter. The property offers a bright reception room, separate fitted kitchen, and well-proportioned bedrooms.

Park West is located in the very popular Connaught Village within easy reach of Marylebone and Paddington making it very well placed with excellent transport links. There is a great variety of shops, eateries and cafés on your doorstep.



STEP INSIDE EDGWARE ROAD



Third Floor

Total area (approx.): 90.7 sq. m (976.2 sq. ft)

Marylebone & Mayfair
020 7935 1775

Energy Rating: C We aim to make our particulars both accurate and reliable. However, they are not guaranteed; nor do they form part of an offer or contract. If you require clarification on any points then please contact us, especially if you're traveling some distance to view. Please note that appliances and heating systems have not been tested and therefore no warranties can be given as to their good working order

MARSH &
PARSONS