



Barrow Road, SW16

£1,650 PCM

A newly decorated two double bedroom ground floor garden flat with a spacious reception room, fully fitted kitchen and modern bathroom.

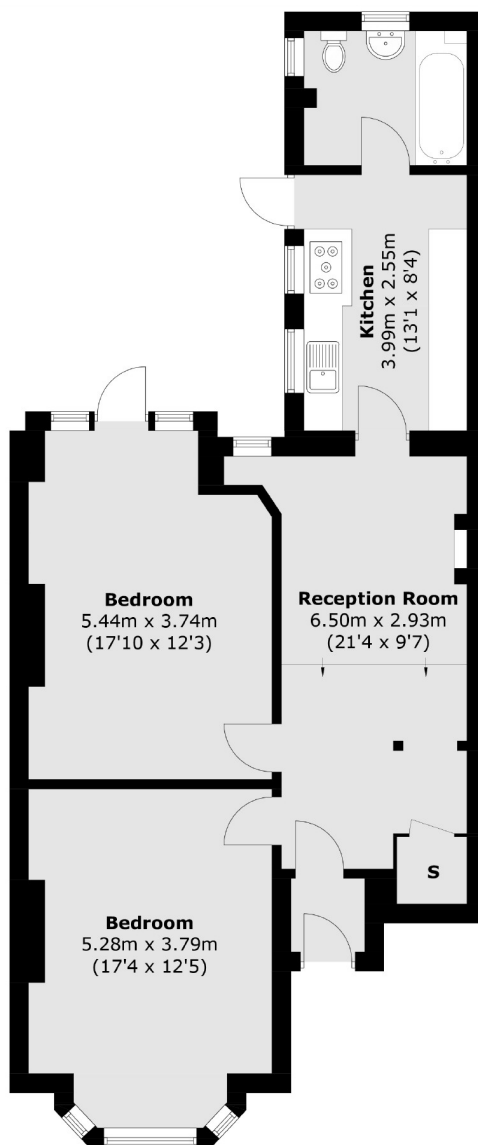
- Two Large Bedrooms
- Private Rear Garden
- Modern Kitchen
- Spacious Reception room
- Newly Decorated
- Furnished

For further information on the costs associated with renting a property, please pop into our office or visit our website.



Barrow Road offers convenient access to both Streatham and Streatham Common train stations as well as many local shops, bars and restaurants. Streatham Common itself is situated at the end of the road.





Ground Floor

Total area (approx.): 78.9 sq. m (849.2 sq. ft)

Jacksons Streatham
1-3 De Montfort Parade
Streatham High Road
Streatham
London
SW16 1BU

Energy Rating: E We aim to make our particulars both accurate and reliable. However they are not guaranteed; nor do they form part of an offer or contract. If you require clarification on any points then please contact us, especially if you're traveling some distance to view. Please note that appliances and heating systems have not been tested and therefore no warranties can be given as to their good working order.