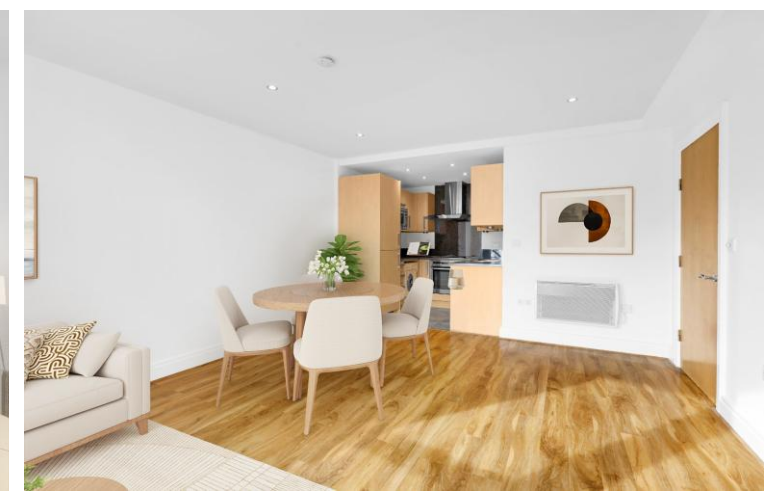
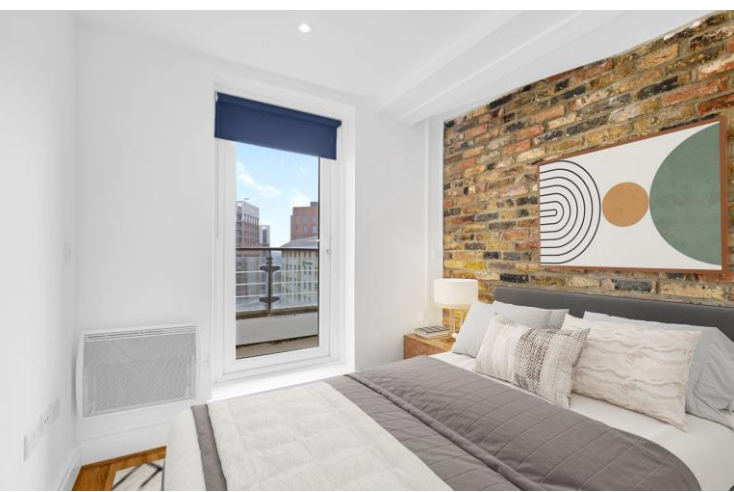




Omega Building
Smugglers Way, SW18

CHESTERTONS





A very bright and well-presented south-facing apartment on the top floor of this popular development in Wandsworth.

Smuggler's Way is ideally located close to Wandsworth Town station and the great choice of shops, cafes and pubs on Old York Road and St. John's Hill.

The flat comprises entrance hall, open-plan kitchen/living, two double bedrooms and two bathrooms. There is ample built-in storage throughout the flat and a large south-facing terrace, accessed via the bedrooms and living room.

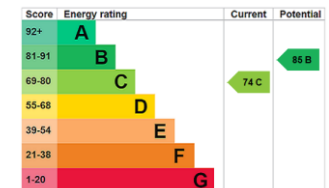
The development benefits from on-site security/concierge and secure underground parking spaces are available to rent.

Located a short distance from the River Thames, the flat is also within easy reach of Wandsworth Common.

Transport links are excellent, with several local bus routes and the mainline station with regular trains to Waterloo a short walk from the apartment.

- Top floor
- South facing terrace
- Chain free and vacant
- Good condition
- Close to the river
- Excellent transport links

Asking Price £400,000

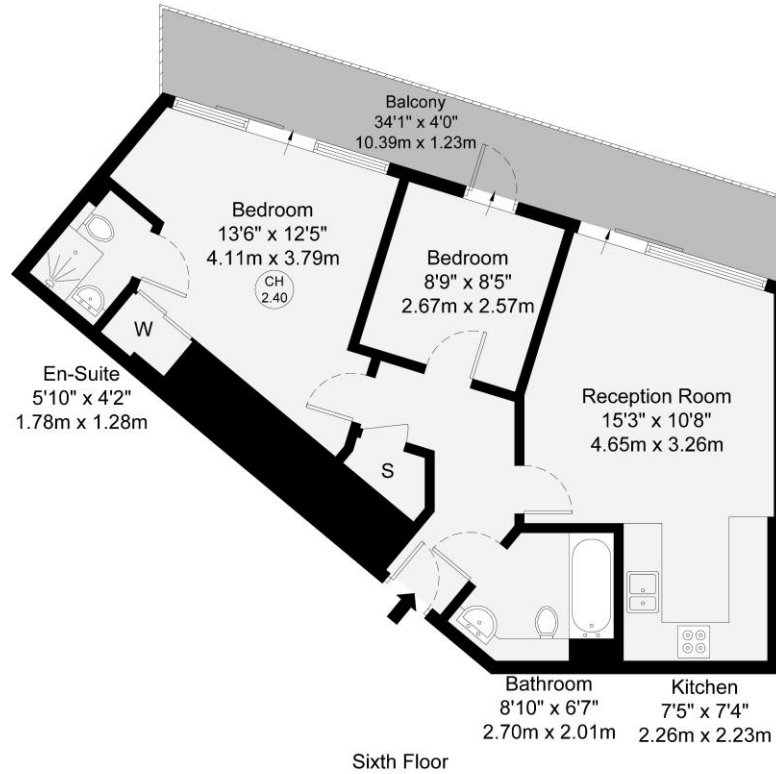


Tenure: Leasehold 970 years remaining
Service Charge: £5383.76 per annum
Ground Rent: £350 per annum
Local Authority: London Borough of Wandsworth
Council Tax Band: G

Chestertons Wandsworth Sales

47 East Hill
 London
 SW18 2QE

wandsworth@chestertons.co.uk
 0208 104 7530
 chestertons.co.uk



GROSS INTERNAL AREA (GIA) The footprint of the property 60.7 sq m / 653 sq ft	TOTAL STORAGE SPACE Storage and wardrobe total area 1.9 sq m / 20 sq ft	EXTERNAL FEATURES Garden, Balcony, Terrace, Verandah etc. 12.7 sq m / 136 sq ft	RESTRICTED HEAD HEIGHT Limited use area under 1.5m 0.0 sq m / 0.0 sq ft
---	---	---	---

Disclaimer: Floorplan measurements are approximate and are for illustrative purposes only. While we do not doubt the floorplan accuracy and completeness, you or your advisors should conduct a careful, independent investigation of the property in respect of monetary valuation.

Maison
VUE

