



Leopold Road, SW19

£745,000

 3  1  1  C

- Spacious period apartment
- Three double bedrooms
- Superb recent fitted Shower/Bathroom



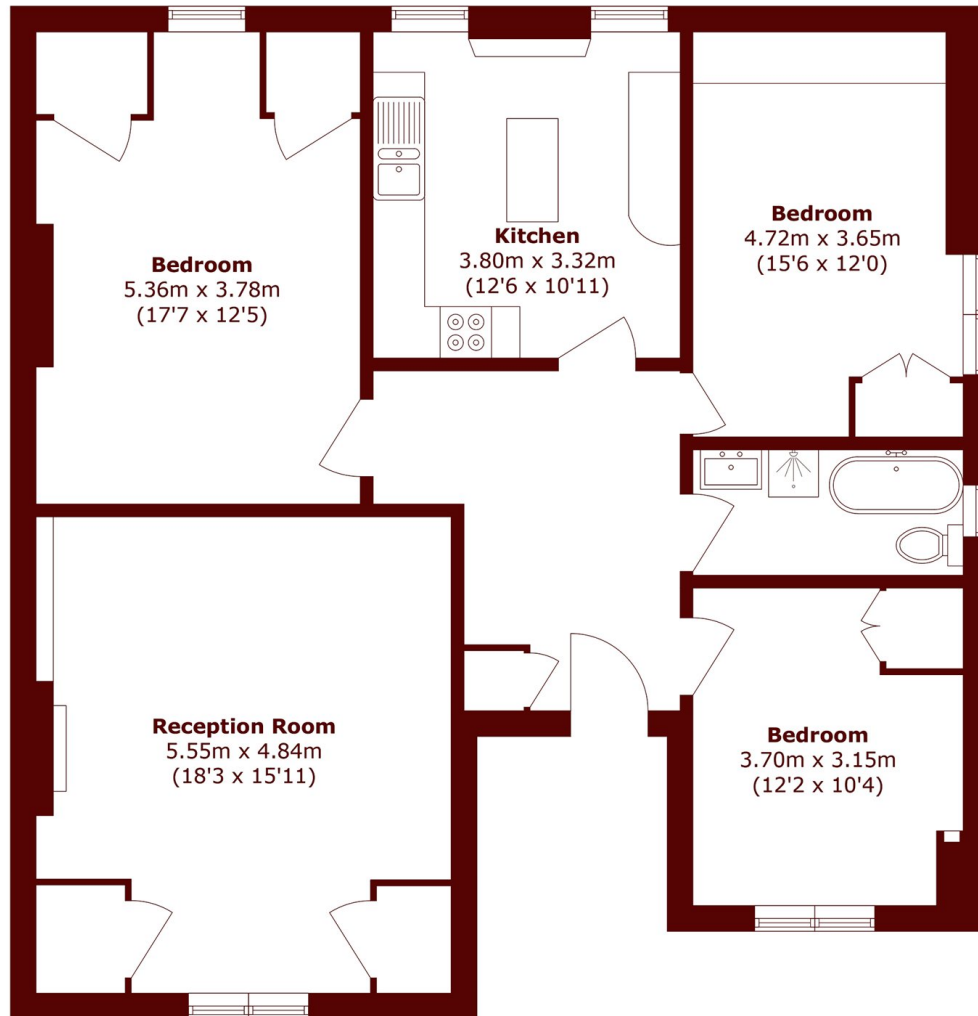
ABOUT THE PROPERTY

A beautifully presented, spacious period conversion occupying the entire top floor of an elegant Victorian building, ideally situated in a prime Wimbledon location, perfectly positioned between the town centre and Wimbledon Village.

This charming apartment offers generous living space and a blend of period character with modern finishes. The accommodation comprises three well proportioned bedrooms, a stylishly refurbished contemporary bathroom, a spacious reception/dining room, and a thoughtfully designed fitted kitchen/breakfast room.

Located less than 100 metres from excellent local shops and within easy walking distance of the District Line and some of the area's most sought-after schools, this property offers both convenience and character in equal measure.





Total area (approx.): 108.5 sq. m (1167.8 sq. ft)

Marsh & Parsons Wimbledon

24 High Street, Wimbledon
Village, SW19 5DX
020 8879 6660