

Pump Lane, Rainham, Gillingham, ME8 7AP

£365,000

 2  1  2



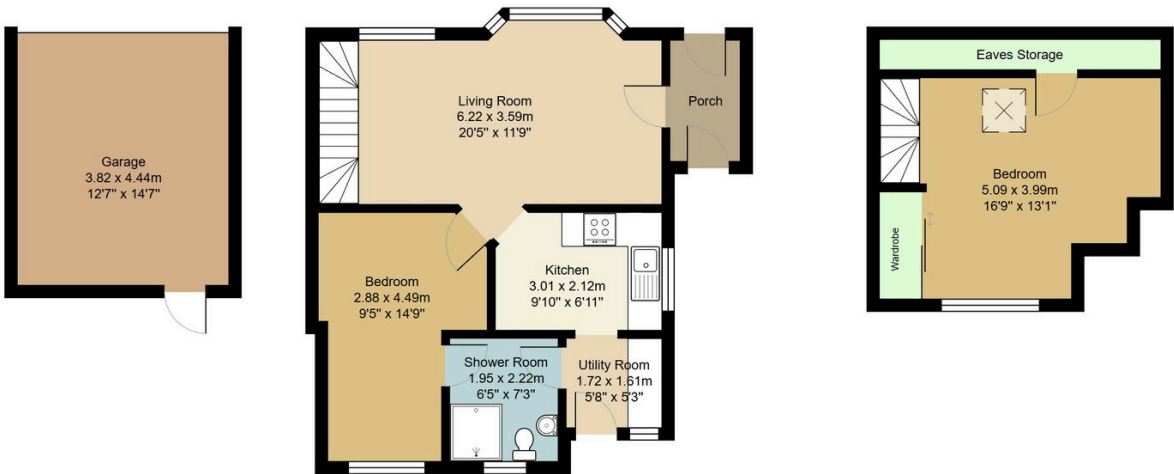
Nestled in one of Rainham's premier roads, this charming 2-bedroom semi-detached chalet bungalow boasts a lovely-sized front garden, set back from the street for peace and privacy. A garage at the rear offers convenient vehicular access, while inside, modern comforts await: a sleek kitchen, practical utility room, and fresh shower room. The ground floor features a bright lounge and bedroom, with stairs leading to a first-floor bedroom.

The westerly-facing rear garden is low-maintenance, perfect for relaxed evenings. Access is exceptional, with local shops, pubs, a large Tesco, swimming pool, and playing fields all within easy reach. Rainham High Street and the main line railway station are also close by, ensuring seamless connectivity for daily life, along with great access to both the lower road countryside park, further on Medway tunnel which links upto the M2(London bound) or you can go coast or London bound at junction 4 which is around 7/8 minutes drive away.

PHIL ABRAHART

POWERED BY
exp UK

- -
 -
 -
 -
- -
 -
 -
 -



Total Area: 88.3 m² ... 950 ft²
All measurements are approximate and for display purposes only.