



RIDGEWAY

RESIDENTIAL SERVICES



7 Whitesands Road

, Lymm, WA13 9LJ

Offers In The Region Of £375,000



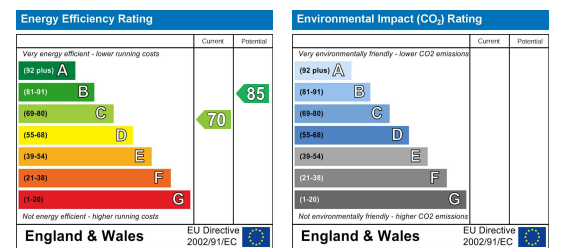
Floor Plan



Area Map



Energy Efficiency Graph

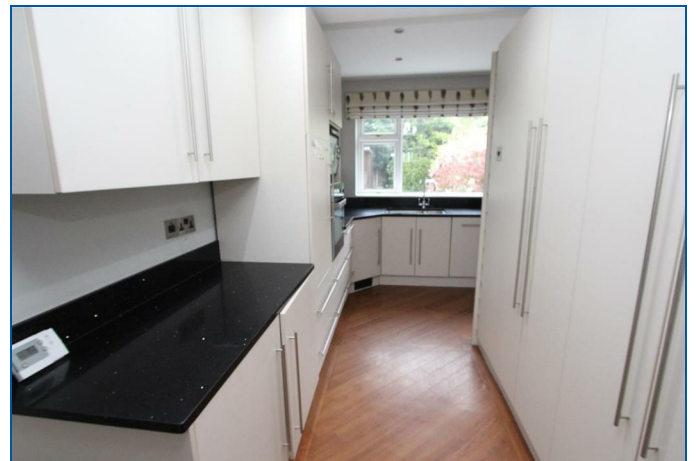


Viewing

Please contact us on 01925 756931 if you wish to arrange a viewing appointment for this property or require further information.

- 4 Bed Semi Detached
- Family Bathroom
- Fitted Kitchen
- Gardens
- Ensuite to Ground Floor Bedroom
- Lounge
- Viewing Essential
- Driveway

Spacious Extended Family Home Situated in a popular location in Lymm. The accommodation on offer briefly comprises Porch, Lounge, Dining Area, Fitted Kitchen with appliances and open plan to dining room. Ground floor Bedroom with en-suite shower room off. 3 Further Bedrooms to the first floor and family bathroom with shower over bath. Gardens to the front and rear of the property. Viewing Essential.



These particulars, whilst believed to be accurate are set out as a general outline only for guidance and do not constitute any part of an offer or contract. Intending purchasers should not rely on them as statements of representation of fact, but must satisfy themselves by inspection or otherwise as to their accuracy. No person in this firm's employment has the authority to make or give any representation or warranty in respect of the property.