



Bannister Close, ATTLEBOROUGH NR17 1YP

welcome to

Bannister Close, ATTLEBOROUGH

William H Brown are pleased to present this stunning 2-bedroom home. This is a must-see property to see its full potential. Complete with generous size kitchen/diner with views of the rear garden.



Description

This beautifully presented two-bedroom semi-detached house offers well-balanced accommodation, excellent outdoor space, and convenient parking.

The property is approached via a driveway providing off-road parking, alongside a single garage, offering both practicality and additional storage. Internally, the home opens into a bright and generously sized living room, creating a welcoming space for relaxation and entertaining.

Leading through from the living room is a modern kitchen/dining room. This space enjoys pleasant open views across the enclosed wraparound garden, allowing plenty of natural light.

To the first floor are two well-proportioned bedrooms, alongside a family bathroom. The property further benefits from ample built-in storage.

Externally, the property boasts a private enclosed wraparound garden, offering a versatile outdoor space. The garden, combined with the driveway and garage, enhances the overall appeal of this fantastic home.

Early viewing is highly recommended to appreciate the location, space, and presentation on offer.

Lounge

15' 9" max x 11' 8" max (4.80m max x 3.56m max)

Double glazed window to the front with wood effect flooring and stair leading to the first floor

Dining Room

10' 9" x 8' 8" (3.28m x 2.64m)

Bi-folding doors to the rear of the garden complete with laminate flooring

Kitchen

11' 8" x 9' (3.56m x 2.74m)

Modern fitted kitchen with a selection of wall mounted and base level storage units. Soft close draws with cooker, hob and extractor

Bedroom One

11' 8" x 8' 9" (3.56m x 2.67m)

Double glazed window to the rear complete with fitted carpet

Bedroom Two

11' 8" x 8' 8" max (3.56m x 2.64m max)

Double glazed window to the front complete with fitted carpet

Bathroom

Three piece suite complete with hand towel rail with W.C and handwash basin with over the bath shower

Rear Garden

Mainly laid to lawn complete with patio at the side

Garage

Electric up and over door with door leading to the rear garden



view this property online williamhbrown.co.uk/Property/ATB110069

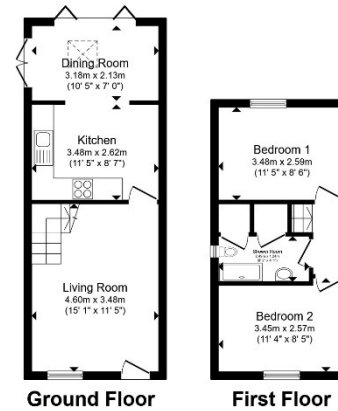


welcome to

Bannister Close, ATTLEBOROUGH

- Driveway with off-road parking
- Spacious living room
- Kitchen/dining room with garden views
- Enclosed wraparound garden
- Single garage

Tenure: Freehold EPC Rating: C Council Tax Band: B



£250,000

Total floor area 58.2 m² (626 sq.ft.) approx
This floor plan is for illustrative purposes only. It is not drawn to scale. Any measurements, floor areas (including any total floor area), openings and orientation are approximate. No details are guaranteed. They cannot be relied upon for any purpose and they do not form part of any agreement. No liability is taken for any error, omission or misstatement. A party must rely upon its own inspection(s). Powered by www.propertybox.io

**william
h brown**



Please note the marker reflects the postcode not the actual property

view this property online williamhbrown.co.uk/Property/ATB110069



Property Ref:
ATB110069 - 0003

1. MONEY LAUNDERING REGULATIONS Intending purchasers will be asked to produce identification documentation at a later stage and we would ask for your co-operation in order that there is no delay in agreeing the sale. 2. These particulars do not constitute part or all of an offer or contract. 3. The measurements indicated are supplied for guidance only and as such must be considered incorrect. Potential buyers are advised to recheck measurements before committing to any expense. 4. We have not tested any apparatus, equipment, fixtures or services and it is in the buyers interest to check the working condition of any appliances. 5. Where an EPC, or a Home Report (Scotland only) is held for this property, it is available for inspection at the branch by appointment. If you require a printed version of a Home Report, you will need to pay a reasonable production charge reflecting printing and other costs. 6. We are not able to offer an opinion either written or verbal on the content of these reports and this must be obtained from your legal representative. 7. Whilst we take care in preparing these reports, a buyer should ensure that his/her legal representative confirms as soon as possible all matters relating to title including the extent and boundaries of the property and other important matters before exchange of contracts.

William H Brown is a trading name of Sequence (UK) Limited which is registered in England and Wales under company number 4268443. Registered Office is Cumbria House, 16-20 Hockliffe Street, Leighton Buzzard, Bedfordshire, LU7 1GN. VAT Registration Number is 500 2481 05.



william h brown



01953 452990



Attleborough@williamhbrown.co.uk



Exchange Street, ATTLEBOROUGH, Norfolk,
NR17 2AB



williamhbrown.co.uk