

GUIDE PRICE

£550,000

Howard Road

, BR1 3QJ

PROPERTY SUMMARY

GUIDE PRICE £550,000 – £600,000 Sindair Hammelton are proud to bring to the market this charming Edwardian terraced house. Beautifully maintained and decorated by the current owners, the property offers period charm combined with a modern feel. The living accommodation comprises a porch with a beautiful stained-glass door, a living room featuring coving, a bay window and a feature fireplace. To the rear of the property there is a fully fitted kitchen/diner with French doors leading onto the garden. To the first floor, there are three bedrooms and a family bathroom. Externally, the property boasts a private rear garden with a seating patio area and a versatile garden room which can be used as an office, gym, or playroom. Viewing highly recommended. EPC: E

Freehold
COUNCIL TAX - D
Construction - Traditional brick
Mains Services - Yes
Heating System - Gas radiators
Broadband – Ultrafast 1000Mbps available, currently with Community Fibre, 300 Mbps
Mobile coverage - Vodafone - 86%, EE - 85%, O2 - 80%, 3 - 66%
Restrictive covenants – No

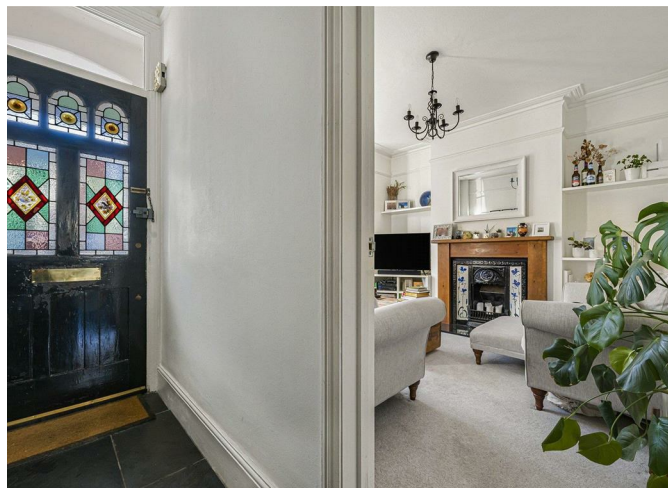
3



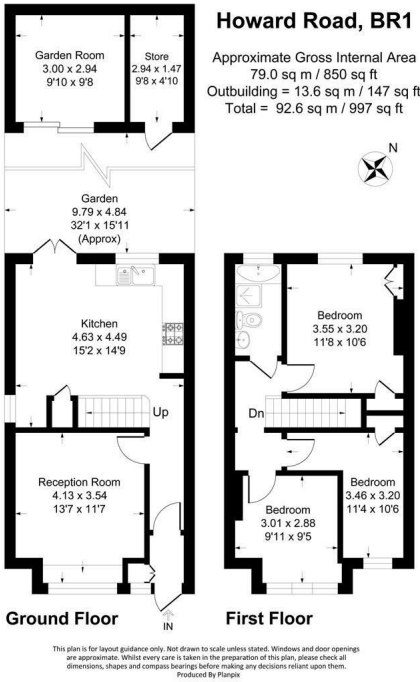
1



1



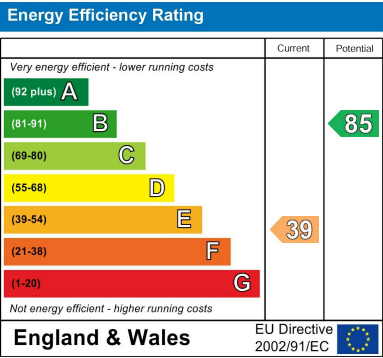




3

1

1



EPC RATING: E COUNCIL TAX BAND: D

Agents Note: Whilst every care has been taken to prepare these particulars, they are for guidance purposes only. All measurements are approximate and are for general guidance purposes only and whilst every care has been taken to ensure their accuracy, they should not be relied upon and potential buyers/tenants are advised to recheck the measurements

OFFICE ADDRESS

23 High Street
 Bromley
 Kent
 BR1 1LG

OFFICE DETAILS

0208 464 5566
info@sinclairhammelton.co.uk