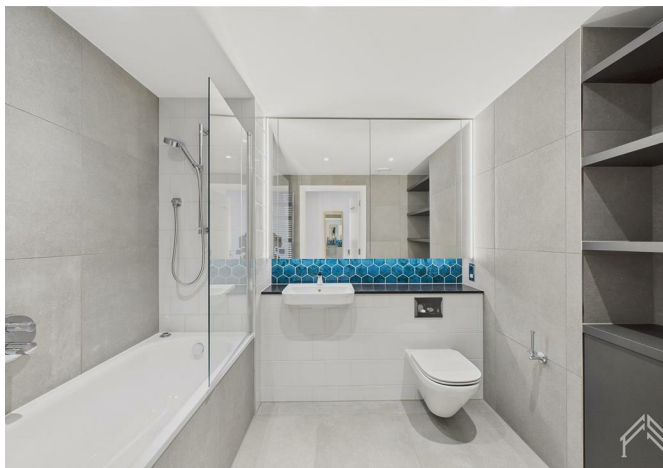
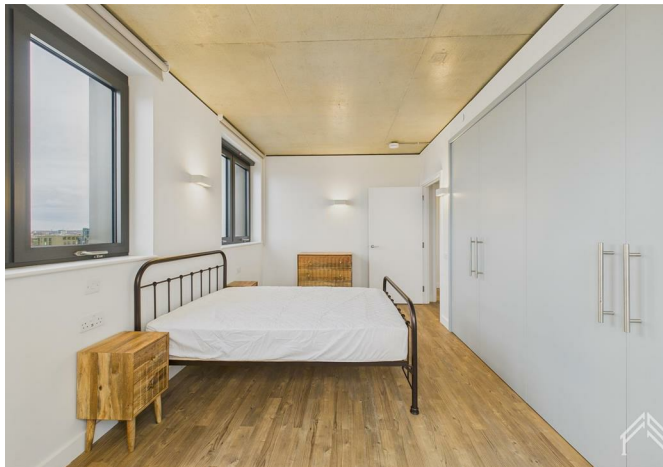




432142314 Repton Gardens, Wellers Way, Wembley, HA9 0JT  
£2,684





## 432142314 Repton Gardens, Wellers Way, Wembley, HA9 0JT

£2,684

New Offer - 16% off your rent. Located within Repton Gardens, this spacious apartment blends practical luxury with a calming, botanically inspired design. Earthy tones and tactile textures are paired with a curated furniture collection by John Lewis & Partners, complemented by sleek Samsung kitchen appliances and premium Kohler bathroom fittings.

Life here extends into beautifully landscaped communal spaces. Three elegant buildings surround a central garden complete with BBQ areas, terraces, and a dedicated children's play zone. Residents also enjoy access to a state-of-the-art gym, stylish lounge and Club Room, roof terraces, pool table, dog park, and thoughtfully designed work-from-home areas - including private rentable offices and meeting rooms.

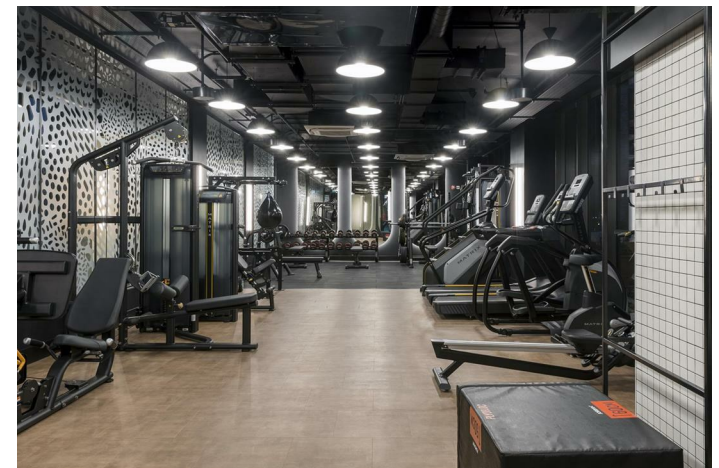
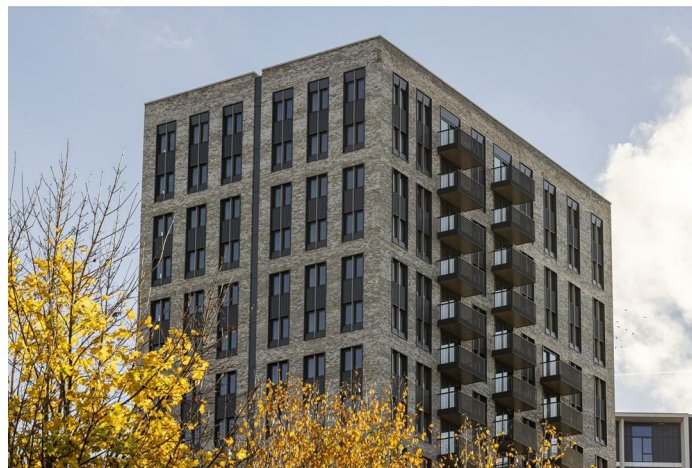
Elevated above the buzz of Wembley Park, Repton Gardens offers a peaceful yet connected lifestyle in one of London's most vibrant new districts - just moments from Bread Ahead, Boxpark, Troubadour Theatre and over 70 shops, cafés and restaurants at the London Designer Outlet. Managed by Quintain Living, the award-winning team behind Wembley Park. Photos show a very similar apartment in this building however the exact layout/floor/view may vary. Price before offer £3115.



## Description

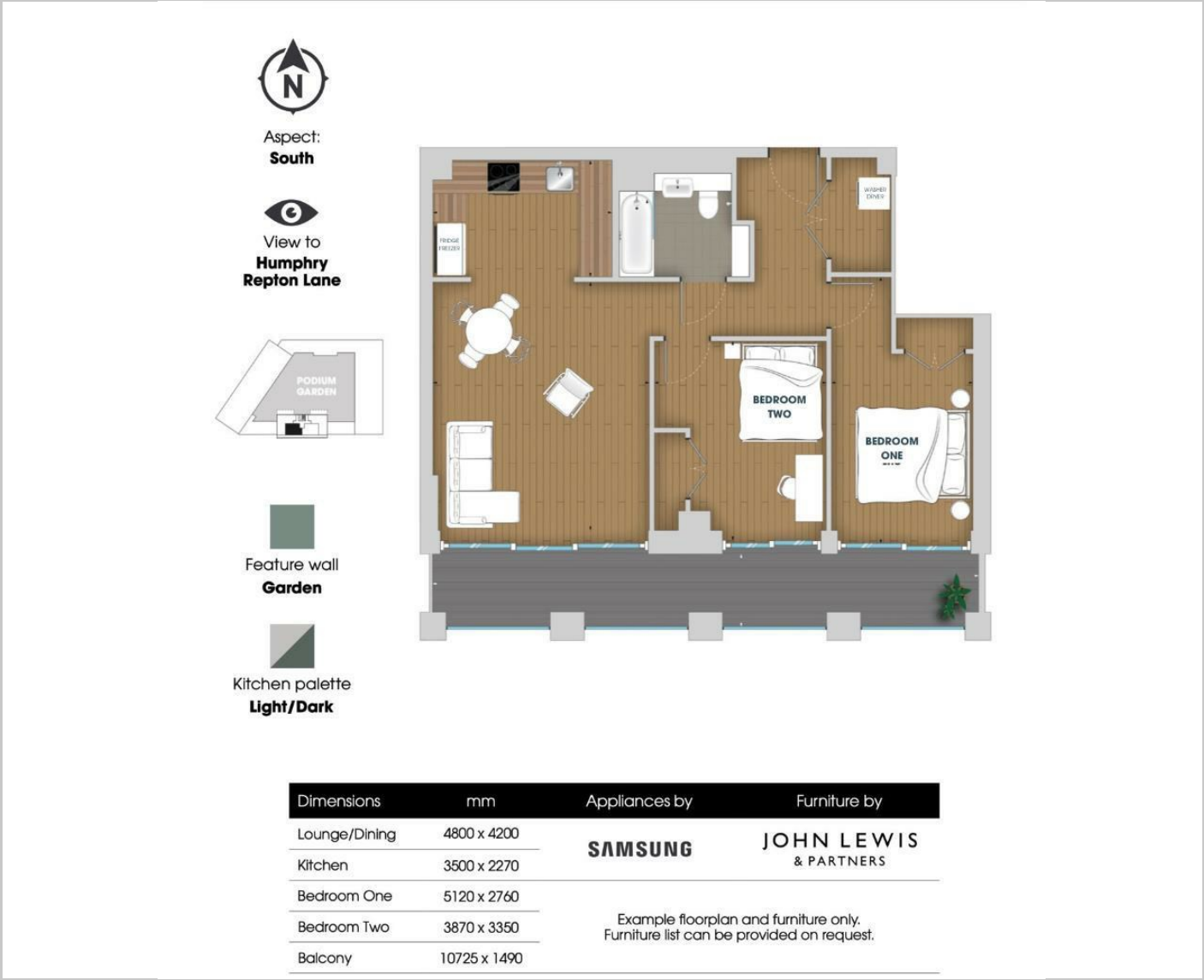


## Situation



Furnished  
Council Tax Band: C  
Available:

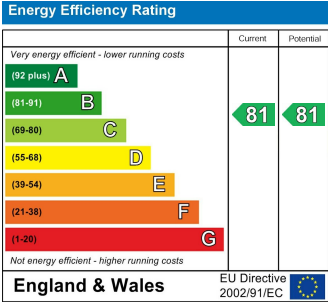
Floor Plans



Area Map



Energy Performance Graph



These particulars, whilst believed to be accurate are set out as a general outline only for guidance and do not constitute any part of an offer or contract. Intending purchasers should not rely on them as statements of representation of fact, but must satisfy themselves by inspection or otherwise as to their accuracy. No person in this firms employment has the authority to make or give any representation or warranty in respect of the property.