



OVER 60?

Secure this property
for up to **59% less!**

Price

£650,000

Freehold

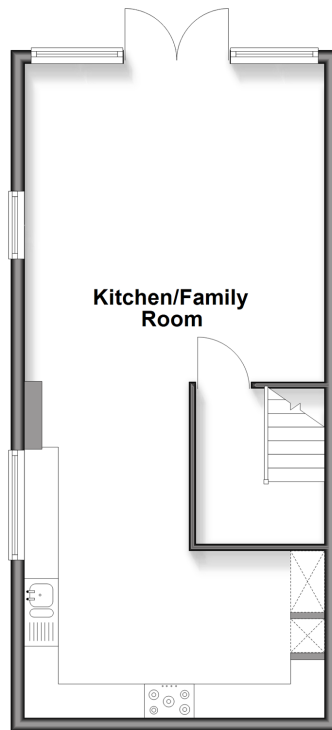
4x  3x  2x 

**Tupwood Gardens,
Caterham, Surrey, CR3**

cubitt & west
Helping you move forwards

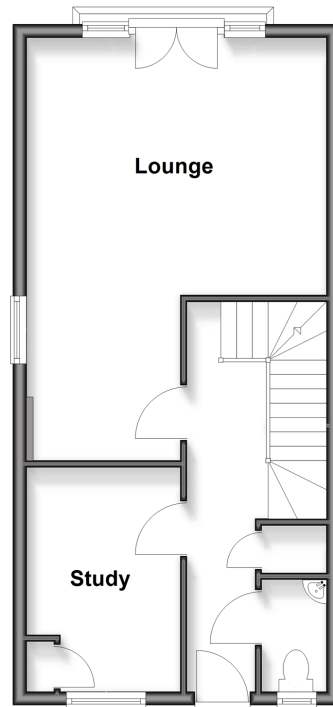
Lower Ground Floor

Approx. 42.7 sq. metres (459.1 sq. feet)



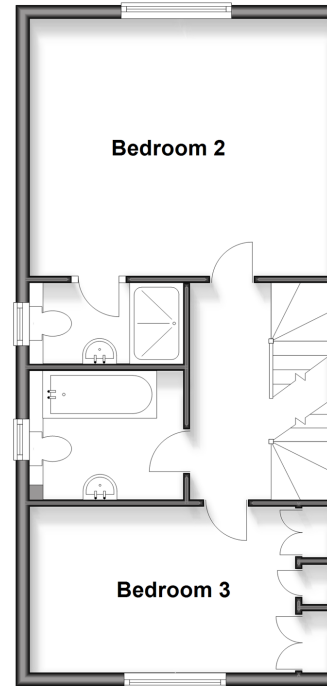
Ground Floor

Approx. 42.6 sq. metres (458.5 sq. feet)
(excluding Balcony)



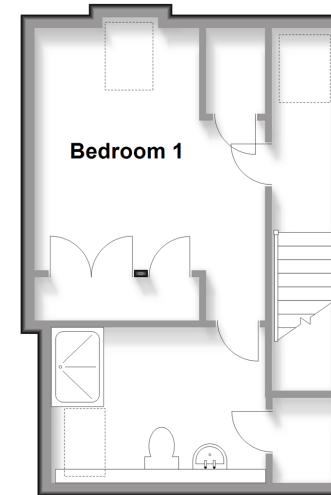
First Floor

Approx. 42.7 sq. metres (459.1 sq. feet)



Second Floor

Approx. 29.2 sq. metres (314.1 sq. feet)



Accommodation

LOWER GROUND FLOOR

Kitchen/Family Room: 31'7 x 14'5 (9.63m x 4.40m)

Landing

GROUND FLOOR

Study: 10'9 x 7'5 (3.28m x 2.26m)

Entrance Hallway

Lounge: 20'7 x 14'6 (6.28m x 4.42m)

Cloak Room

Landing

FIRST FLOOR

En Suite Shower Room

Bedroom 2: 14'10 x 11'1 (4.52m x 3.38m)

Bathroom

Bedroom 3: 14'6 x 7'2 (4.42m x 2.19m)

Landing

SECOND FLOOR

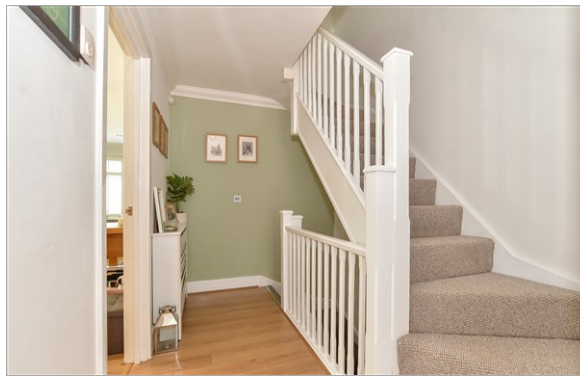
Bedroom 1: 14'6 x 12'6 (4.42m x 3.81m)

En Suite Shower Room

OUTSIDE

Driveway

Rear Garden



Main features

- Located within a gated private development
- Ideally situated for Caterham Town Centre's amenities and transport links
- Open countryside close by
- Semi-detached townhouse
- Two bedrooms offering en-suite
- Secluded and level rear garden
- Off-street parking for three plus



Nearest Schools

Primary Schools: St John's CofE Aided Primary 0.9 miles, Hillcroft Primary 1.5 miles, Marden Lodge Primary 1.6 miles

Secondary Schools: Caterham School 0.9 miles, Clifton Hill



Transport Information

Train Stations: Caterham 0.6 miles, Whyteleafe 2.3 miles, Whyteleafe South 3.0 miles



Address

Tupwood Gardens, Caterham, Surrey, CR3



Directions

For directions to this property please contact us.



cubitt&west
Helping you move forwards

Call Caterham Branch 01883 331000 ■ cubittandwest.co.uk



Unable to display material information. Please check with the branch for material information details for this property



24407798/20260418/JE/DS