



Royal Mews, Southend-On-Sea, SS1 1DB
£1,250 Per month



Royal Mews, Southend-On-Sea, SS1 1DB

£1,250 Per month



Some More Information

Accessed via a secure communal entrance with video entry system, lift and staircase serving all floors, the apartment is located on the second floor. Residents also benefit from secure communal bicycle storage, providing a practical solution for commuters and leisure cyclists alike.

The welcoming entrance hall offers access to all principal rooms and features a useful built-in storage cupboard.

The impressive open-plan kitchen, dining and living area forms the heart of the home. Flooded with natural light from dual-aspect windows, the room provides ample space for both seating and dining. The contemporary kitchen is fitted with a range of eye and base level units incorporating an integrated fridge, freezer, dishwasher and washing machine, together with an oven, hob and extractor hood. A breakfast bar creates the perfect space for casual dining or your morning coffee.

The principal bedroom is a spacious double room and benefits from a stylish en-suite shower room complete with rainfall shower, wash hand basin and WC. The second double bedroom offers flexible accommodation, making it equally suitable as a guest room or home office.

Completing the accommodation is a modern family bathroom, fitted with a panelled bath incorporating a rainfall shower over, wash hand basin and WC, all finished with contemporary tiling and quality fittings.

Location

Located in the very centre of Southend, this apartment enjoys immediate access to an excellent range of shops, cafés, restaurants and leisure facilities. Southend's famous seafront and pier are just a short stroll away, providing miles of coastline to enjoy throughout the year.

For commuters, Southend Central and Southend Victoria railway stations are both within easy walking distance, offering regular services into London, whilst the A127 and A13 provide convenient road links across Essex and beyond.

Open Plan Kitchen / Living Room

11'3" x 23'6" (3.45m x 7.18m)

Principal Bedroom

10'8" x 11'5" (3.27m x 3.50m)

En-Suite Shower Room

Bedroom Two

11'3" x 8'11" (3.45m x 2.74m)

Family Bathroom

9'1" x 8'2" (2.79m x 2.51m)

Services

Council Tax Band – C

Local Authority – Southend On Sea

EPC – C

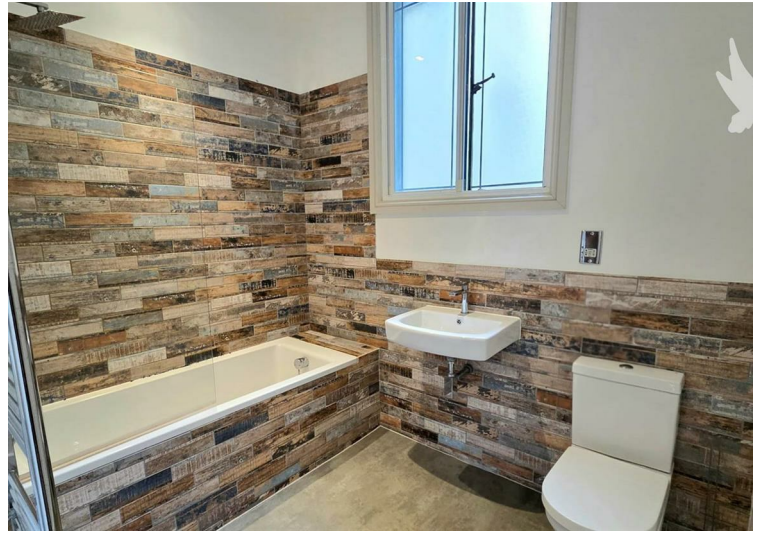
*Mains Electric

*Mains Water

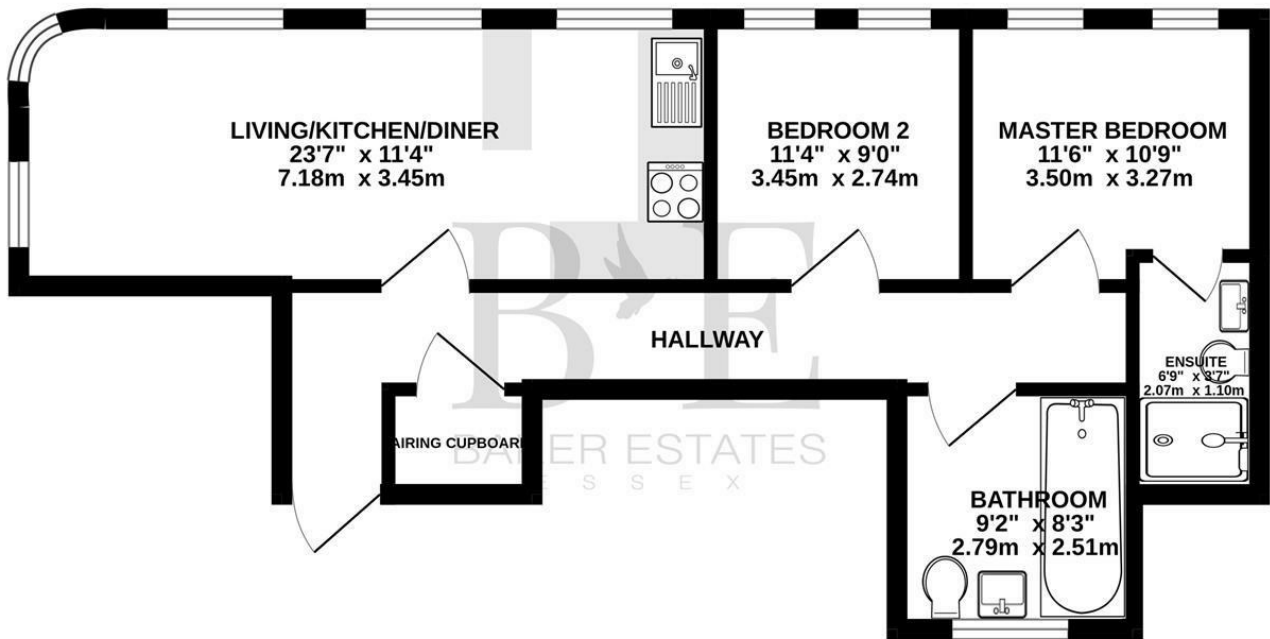
*Mains Drainage.

Broadband Availability - Ultrafast Broadband Available with speeds up to 76mbps Via Openreach (details obtained from Ofcom Mobile and Broadband Checker) – June 2026.

Mobile Coverage - It is understood that the mobile phone service is available from EE, O2, Three (details obtained from Ofcom Mobile and Broadband Checker) - June 2026.

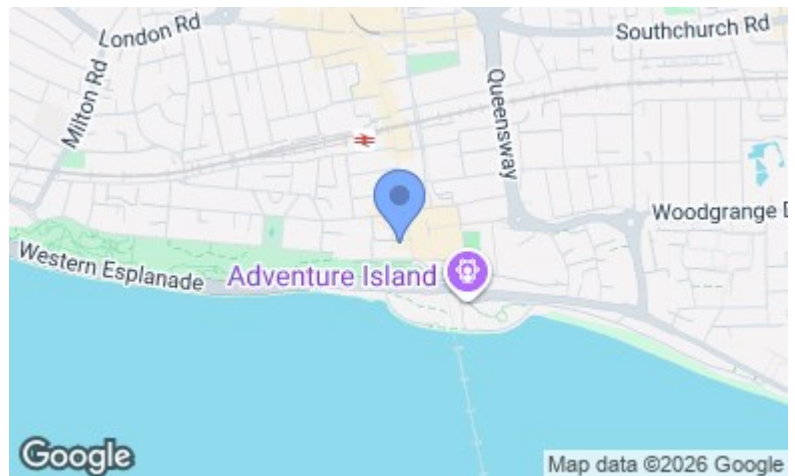


GROUND FLOOR
743 sq.ft. (69.0 sq.m.) approx.



TOTAL FLOOR AREA : 743 sq.ft. (69.0 sq.m.) approx.

Whilst every attempt has been made to ensure the accuracy of the floorplan contained here, measurements of doors, windows, rooms and any other items are approximate and no responsibility is taken for any error, omission or mis-statement. This plan is for illustrative purposes only and should be used as such by any prospective purchaser. The services, systems and appliances shown have not been tested and no guarantee as to their operability or efficiency can be given.
Made with Metropix ©2026



Energy Efficiency Rating		Current	Potential
Very energy efficient - lower running costs			
(92 plus) A			
(81-91) B			
(69-80) C			
(55-68) D			
(39-54) E			
(21-38) F			
(1-20) G			
Not energy efficient - higher running costs			
England & Wales	EU Directive 2002/91/EC	73	73

Environmental Impact (CO ₂) Rating		Current	Potential
Very environmentally friendly - lower CO ₂ emissions			
(92 plus) A			
(81-91) B			
(69-80) C			
(55-68) D			
(39-54) E			
(21-38) F			
(1-20) G			
Not environmentally friendly - higher CO ₂ emissions			
England & Wales	EU Directive 2002/91/EC		

These particulars, whilst believed to be accurate are set out as a general outline only for guidance and do not constitute any part of an offer or contract. Intending purchasers should not rely on them as statements of representation of fact, but must satisfy themselves by inspection or otherwise as to their accuracy. No person in this firm's employment has the authority to make or give any representation or warranty in respect of the property.