



## Montana Close, South Croydon, CR2 0AT

£1,500 PCM





# Montana Close, South Croydon, CR2 0AT

£1,500 PCM



AVAILABLE IMMEDIATELY & UNFURNISHED.

A refurbished two bed apartment with EPC B rating, private garage and a bright modern interior, set opposite Wettern Tree Garden and just a short walk from Purley Oaks and Sanderstead stations.

A beautifully refurbished first floor apartment set in a peaceful cul-de-sac directly opposite Wettern Tree Garden. Offering an excellent EPC B rating, triple glazing and a brand new boiler, this home delivers modern comfort, excellent energy efficiency and low running costs.

Inside, the property features a bright lounge/diner, a contemporary kitchen with generous storage, a modern bathroom, and two well proportioned bedrooms.

A rare benefit in this area, the property includes a garage en-bloc, providing secure parking or additional storage. There is also easy on-street parking for visitors.

The location is superb, being just a short walk to Purley Oaks and Sanderstead stations, offering fast links into London Bridge and Victoria. Local cafés, shops and green spaces are all within easy reach, making this a highly convenient and enjoyable place to live.

Council Tax Band: C (London Borough of Croydon)  
Holding Deposit: £346





Road Map



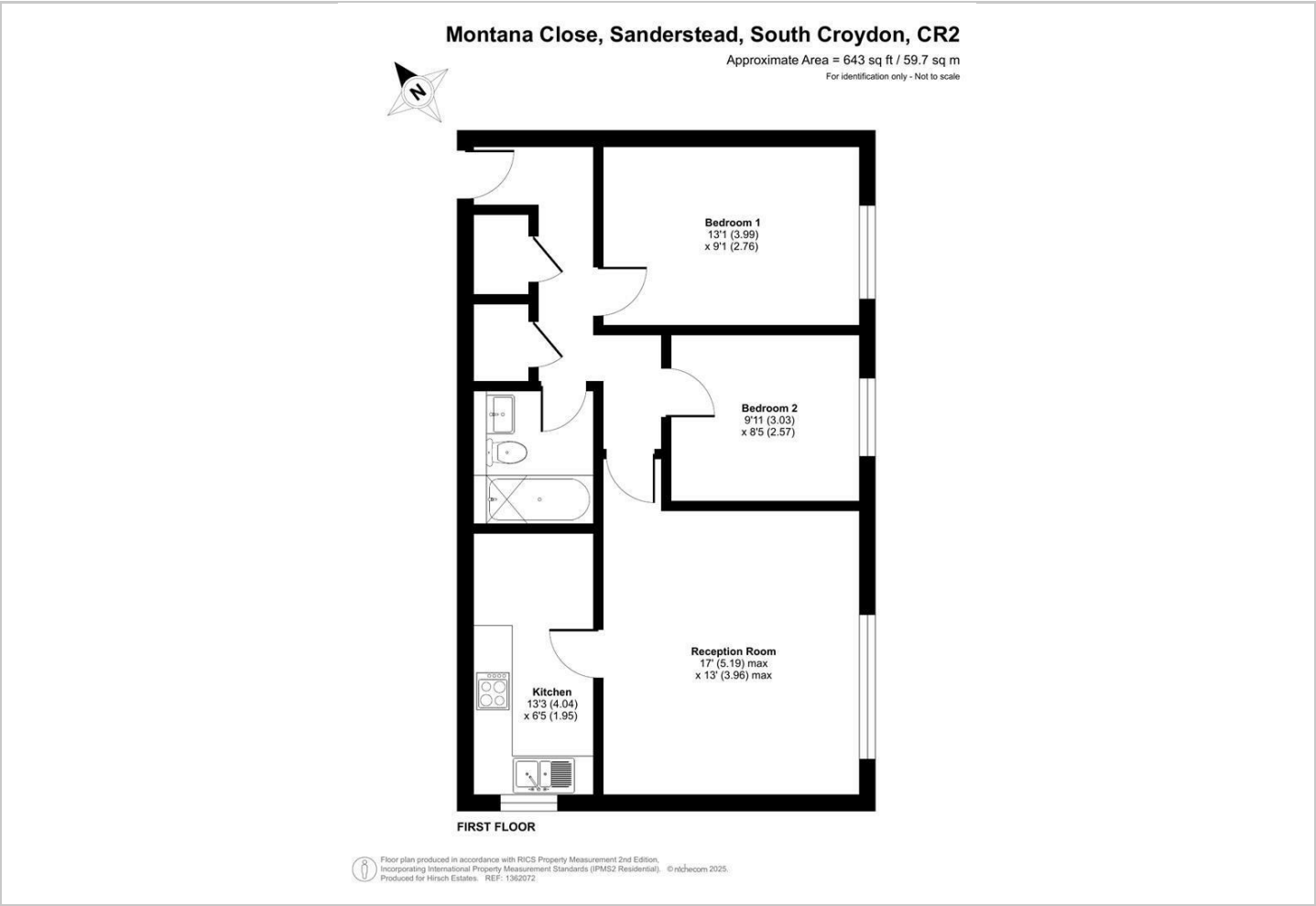
Hybrid Map



Terrain Map



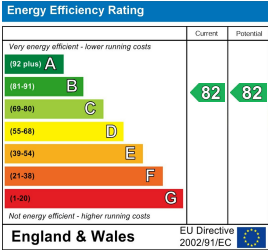
Floor Plan



Viewing

Please contact our Hirsch Estates Office on 020 3002 0587 if you wish to arrange a viewing appointment for this property or require further information.

Energy Efficiency Graph



These particulars, whilst believed to be accurate are set out as a general outline only for guidance and do not constitute any part of an offer or contract. Intending purchasers should not rely on them as statements of representation of fact, but must satisfy themselves by inspection or otherwise as to their accuracy. No person in this firms employment has the authority to make or give any representation or warranty in respect of the property.