



Key Features

- ◆ Three-bedroom, second-floor apartment
- ◆ Desirable Upperton area of Eastbourne
- ◆ Walking distance from town centre and train station
- ◆ Allocated off-road parking space
- ◆ Appliances included
- ◆ EPC rating C



Hurst Road, Upperton, Eastbourne

£1,375 PCM



Northwood are delighted to welcome to market this fantastic, freshly decorated, three-bedroom, second-floor apartment in the desirable Upperton area of Eastbourne.

Accommodation comprises: large living room, fitted kitchen with appliances, three double bedrooms, bathroom with shower over bath and utility room.

Further benefits include gas central heating, secure entry phone, allocated, off-road parking space, new carpets, new blinds and new insulated roof and cavity wall insulation achieving EPC rating C.

Located in a quiet residential street on the outskirts of Eastbourne, within walking distance of the Old Town and close to local transport links, this lovely apartment in a converted period villa deserves to be seen.





Please view our immersive virtual tour to fully appreciate this fantastic property:
<https://tour.giraffe360.com/2cd37b0190a34e26b573e2bb60f69835>

Mobile Phone Coverage and Broadband speeds can be checked on the Ofcom website:
<https://checker.ofcom.org.uk/>

Council Tax Band D: £2654

Holding Deposit: £315.00 (equivalent to one week's rent)

Full Deposit: £1585.00 (holding deposit + equivalent of four weeks' rent)

1st month's rent + Full Deposit: £2960.00

Total household income must exceed £41,250.00 to be considered for this property.

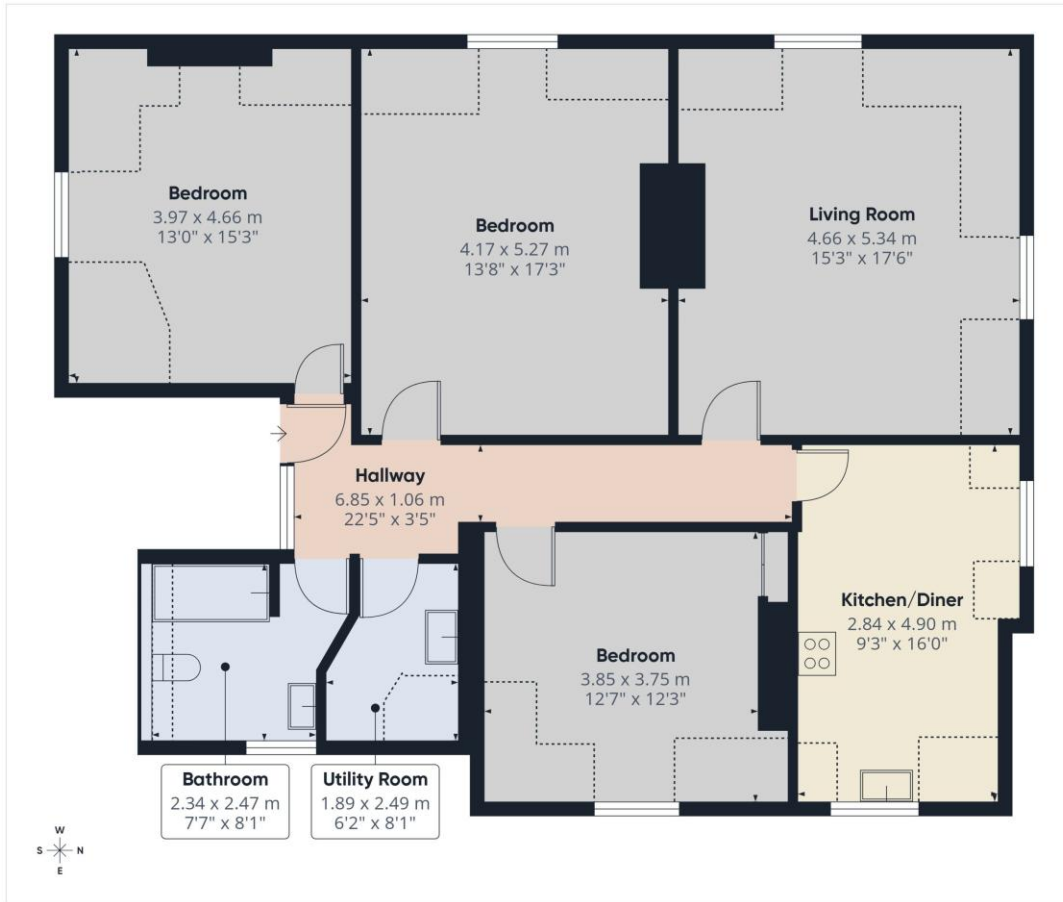
This property is managed directly by the landlord.











Approximate total area^m
112.6 m²
1212 ft²

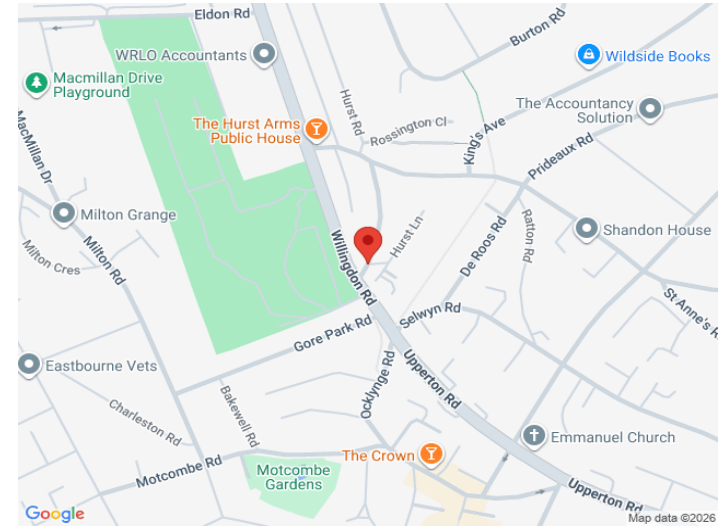
Reduced headroom
20.4 m²
220 ft²

(1) Excluding balconies and terraces

Reduced headroom
----- Below 1.5 m/5 ft

Calculations reference the RICS IPMS 3C standard. Measurements are approximate and not to scale. This floor plan is intended for illustration only.

GIRAFFE360



SEE MORE ONLINE

Northwood

81-83 South Street
Eastbourne
BN21 4LR
01323 744544
eastbourne@northwooduk.com