



## West Parkside, SE10

£475,000

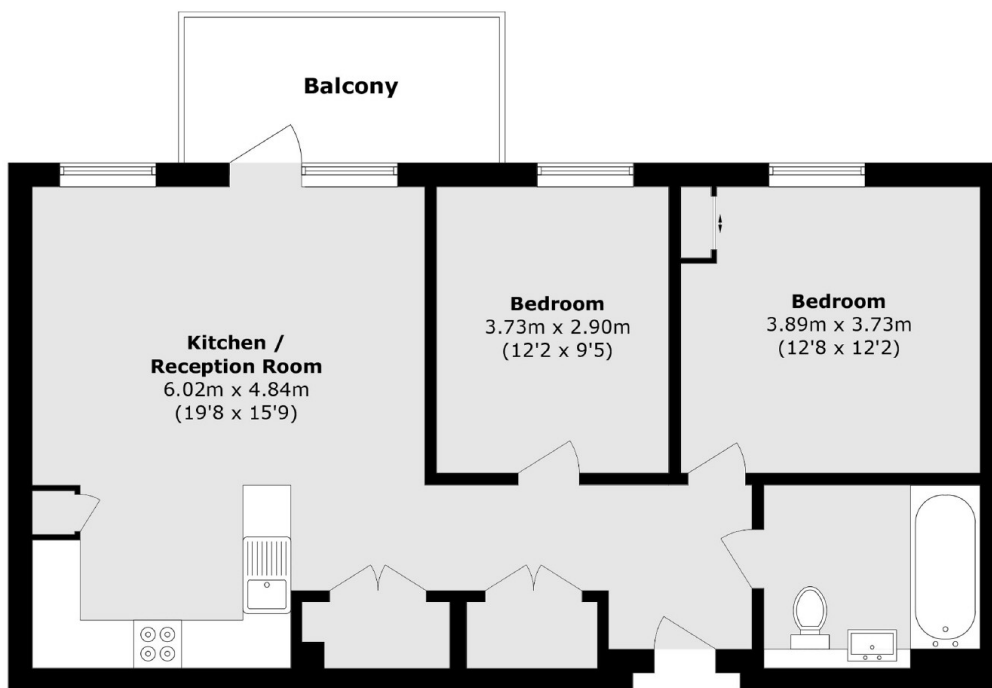
A beautifully presented two bedroom modern apartment in a sought after location which has been finished to a high standard and further benefits from a large private balcony, a viewing is highly recommended.

The apartment is located within walking distance of the O2 which hosts a wide selection of bars, restaurants and cinema, The Emirates cable car is also nearby. North Greenwich tube station provides links to Canary Wharf and London Bridge. Charlton and Westcombe Park overground. Greenwich Millennium Village features an abundance of landscaped green areas and riverside walkways. The development has a health centre, primary school and local shopping facilities. Retail outlets as well as the local shopping facilities. There are excellent transport links with easy access onto the A102, A2 and A13.

### Features

- Two Bedrooms
- Private Balcony
- Ideal First Purchase
- No Work Required
- Immaculate Throughout
- Chain Free

West Parkside,  
London, SE10



Total area (approx.): 71.3 sq. m (767.5 sq. ft)

Balcony area (approx.): 7.2 sq. m (77.5 sq. ft)