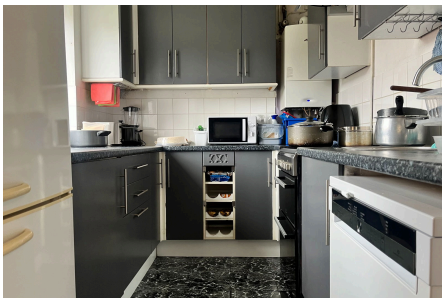


Lodge Close, Banbury, OX16 9BW

Offers Over £120,000

🛏 2 🚿 1 🚗 1



Property Ref JV0032

A first-floor maisonette situated on the south side of Banbury, benefiting from access to attractive communal gardens.

The property offers a spacious living room with ample space for dining, a separate fitted kitchen, two generous double bedrooms – both with built-in wardrobe space – and a modern family shower room.

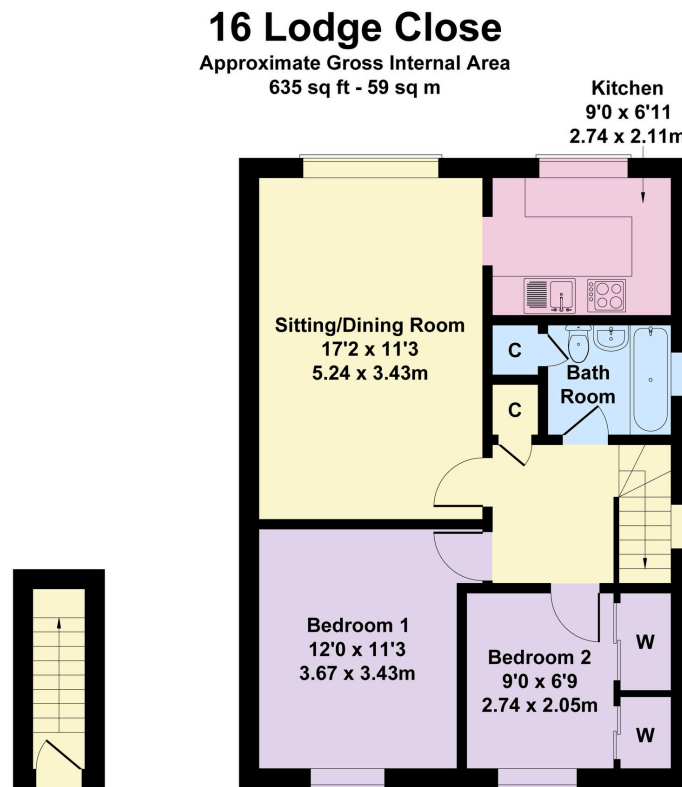
Ideally located within walking distance of Banbury town centre, the train station, and Horton Hospital, this home is perfectly positioned for commuters and local amenities alike.

The property is being secure sale online bidding.

Call us today for more information or to arrange a viewing.

Key Features

- TWO BEDROOMS
- KITCHEN WITH APPLIANCES
- PRIVATE GARDEN
- Sold by secure sale online bidding
- First Floor
- BATHROOM WITH SHOWER OVER BATH
- COMMUNAL PARKING
- Property Ref JV0032



GROUND FLOOR FIRST FLOOR

Not to Scale. Produced by The Plan Portal 2026
For Illustrative Purposes Only.