

# VOEL HOUSE

HIGHGATE N6







## VOEL HOUSE SOUTH GROVE, HIGHGATE N6

VOEL HOUSE IS A BEAUTIFUL DETACHED GRADE 2\* FAMILY HOUSE DATING BACK TO THE LATE 17TH CENTURY C 1680, WITH LATER EXTENSIONS IN 1713 AND 1880.

### DESCRIPTION AND HISTORICAL NOTE

This exceptional property, one of the finest and oldest in Highgate Village according to the Survey of London has had many notable occupants and has been owned by the current family for the last 64 years. The house sits well back from the road behind a deep drive and front garden, and retains many period features with its gracious accommodation, predominantly over three floors extending to 4279 Sq ft (398 sq mts) with a stunning, fully stocked 218' South facing walled garden.

As you enter you are greeted by a magnificent 17th century staircase, there are four reception rooms and a kitchen breakfast room all on the ground floor, the principal dual aspect bedroom which has beautiful views onto the garden and St Michaels Church has an adjacent bathroom and bedroom that could be used as a dressing room, two further bedrooms (originally one room) and a study. The top floor has three further bedrooms, a family bathroom and a small kitchenette.

Outside, the walled grounds are truly magnificent and extend to over 200' with a manicured lawn, well stocked flower beds, mature herbaceous borders, a section of garden has a 'kitchen garden' with various fruit trees and bushes and an additional area of lawn that is ideal for a children's play area. Finally, to the front of the house there is private parking for 3 to 4 vehicles and a front garden with a high hedge providing good privacy.

### ACCOMMODATION & AMENITIES

Entrance Hall • Inner Reception Hall • Drawing Room • Family Room • Garden Room  
Dining Room • Kitchen/Breakfast Room • Guest WC • Principal Bedroom • En Suite  
Bathroom • Dressing Room/Bedroom 2 • 5/6 Further Bedrooms • Family Bathroom  
Kitchenette • Cellar • Private Front Garden • 218' South Facing Garden • Off Street  
Parking for 4 Cars • Alarm

PRICE UPON APPLICATION  
FREEHOLD  
SOLE SELLING AGENTS

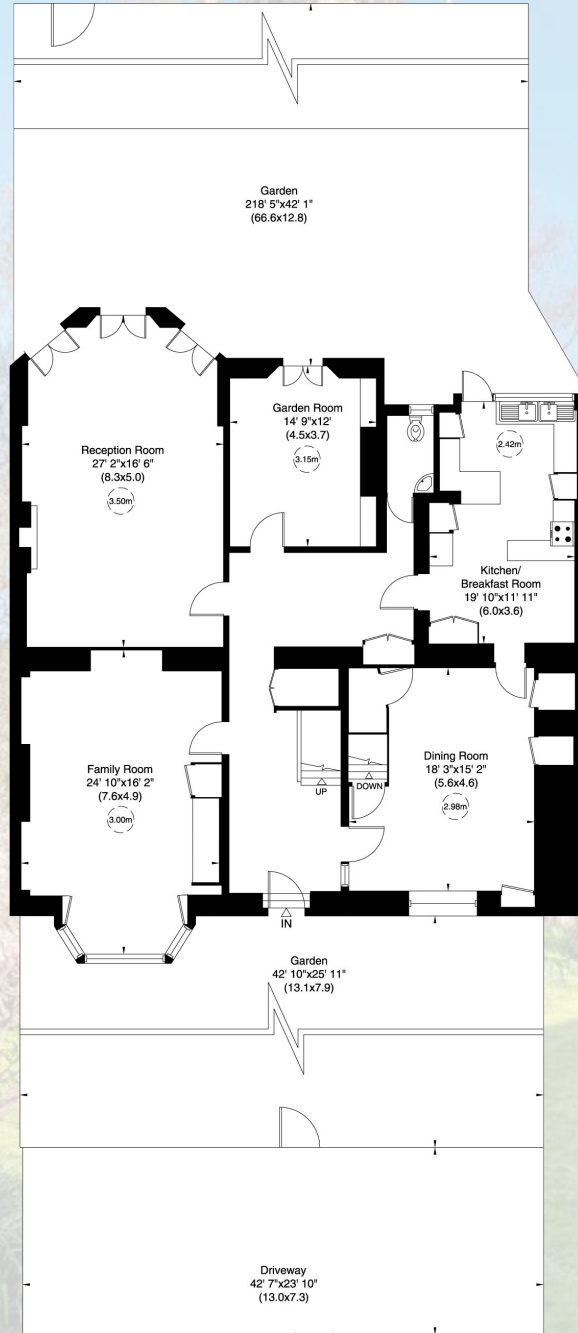




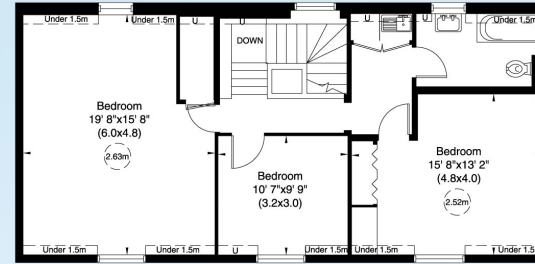




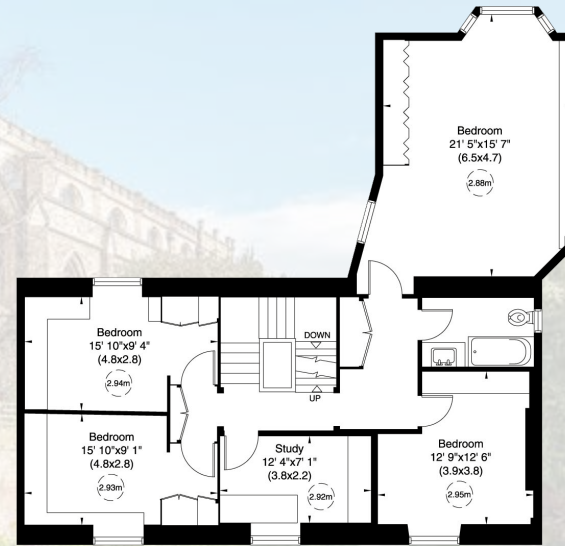
APPROXIMATE AREA  
 402 SQ\_M/4,322 SQ\_FT  
 INCLUDING UNDER 1.5M  
 398 SQ\_M/4,279 SQ\_FT  
 EXCLUDING UNDER 1.5M



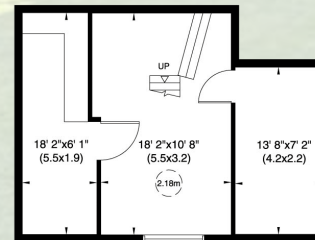
Ground Floor



Second Floor



First Floor



Basement



**MARCUS  
 PARFITT**

RESIDENTIAL SALES & ACQUISITIONS

**020 7431 0000**

28 Church Row, Hampstead, London NW3 6UP  
 email: info@marcusparfitt.com www.marcusparfitt.com

