



Gipsy Lane, Grays

Offers Over £300,000



- Stylishly presented throughout—no “project” required
- Spacious lounge/diner perfect for hosting (or lounging like a pro)
- Modern kitchen that actually makes cooking appealing
- Two generous bedrooms with great natural light
- Contemporary bathroom with fresh, clean finishes
- Prime location close to town centre buzz
- Excellent transport links straight into London
- Ideal for first-time buyers, couples, or savvy investors
- Low-maintenance living = more time for the fun stuff
- That “this is the one” feeling the moment you walk in



Stylish two-bedroom home on Gypsy Lane, moments from Grays town centre and station, offering spacious living, modern interiors, and direct London links—perfect for first-time buyers or commuters.

Welcome to the home that's about to upgrade your lifestyle and your Instagram grid. Sitting pretty on Gypsy Lane, this fabulously presented two-bedroom house is serving comfort, convenience, and just the right amount of "look at me now" energy.

Step inside and prepare for that "yep, I could definitely live here" feeling. The spacious lounge/diner is basically your new HQ—Netflix marathons, dinner parties, TikTok dances... it's got range. Light-filled and effortlessly stylish, it's the kind of space that makes you want to cancel plans just to stay in.

The modern kitchen? Sleek, functional, and ready for anything from gourmet attempts to "I'll just order a takeaway." Either way, it looks great doing it.

The bathroom continues the theme: fresh, modern, and just the right amount of spa vibes.

Upstairs, two well-proportioned bedrooms offer the perfect mix of cosy and calm—ideal for recharging, working from home, or pretending you're in a Pinterest board.

And the location? Let's talk convenience. You're moments from Grays town centre, meaning shops, cafes, and essentials are all within easy reach. Plus, the nearby station gives you a direct line to London Fenchurch Street—so whether it's work or play in the capital, you're sorted.

In short: this home isn't just a property—it's a lifestyle upgrade waiting to happen.



THE SMALL PRINT:

Material Information: <https://reports.sprift.com/property-report/38-gipsy-lane-grays-rm17-6ee/5152875>

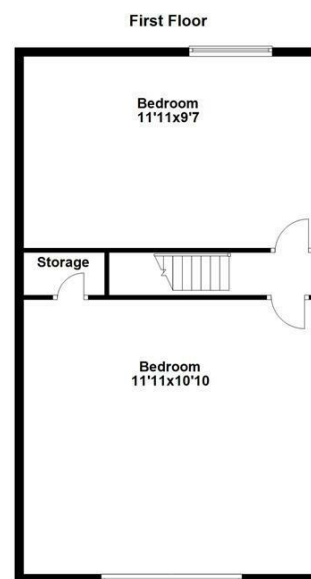
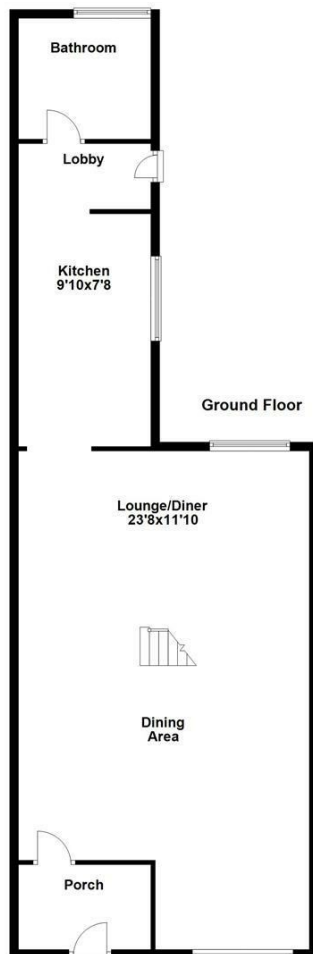
We've done our homework, but we aren't fortune tellers. We haven't poked the boiler, flicked the switches, or tested every light bulb. Nothing here counts as a contract or statement of fact—get your solicitor to check all the serious stuff, like tenure, parking, planning permission, building regs, and all that jazz!

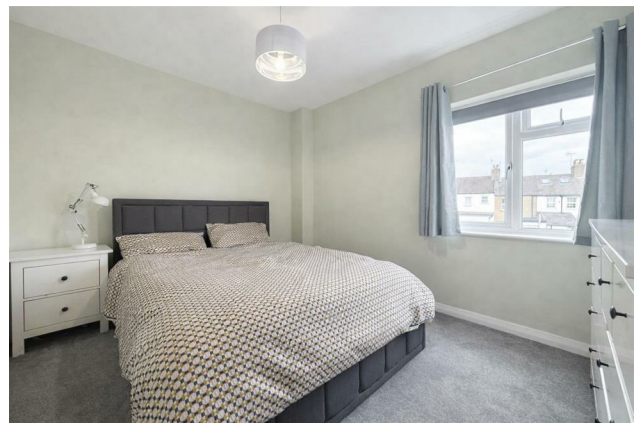
Measurements? Guides only. Floorplans? Handy, but not perfectly to scale. Travelling far? Call first—clarification is free, petrol is not.

We may receive a referral fee if you choose to use third-party services we recommend, such as conveyancers, mortgage advisers, or EPC providers, but you are under no obligation to do so.

AML Checks - Law says we must run one. £96 including VAT per buyer. Tiny toll, big compliance.

Buyer Reservation Fee - Offer accepted? Pay a reservation fee (min £1,000) to lock it in. VIP pass to the property, protects against gazumping. Complete the sale? Fee refunded. Things go sideways? Sometimes non-refundable. Head to our website for full details – or skip the scrolling and just call.





Colubrid.co.uk