



3 Underhill Road, Hereford, HR1 1SY



**Sunderlands**  
Residential Rural Commercial



**3 Underhill Road  
Hereford  
HR1 1SY**

### Summary of Features

- Semi-detached property
- Four bedrooms
- Two reception rooms
- Driveway parking and garage
- Sought after residential location
- Near to schooling and amenities

**Asking Price £325,000**

Located in a sought-after residential neighbourhood, this charming semi-detached home presents an excellent opportunity for families and individuals alike. The property boasts two spacious reception rooms, ideal for relaxing or entertaining, along with four well-proportioned bedrooms that offer both comfort and practicality. A driveway and garage provide valuable parking and storage. To the rear, the property features a generous garden laid to lawn, offering ample space for outdoor dining, social gatherings, or simply unwinding in the fresh air. The area is well served by local amenities and reputable schools, while the nearby countryside allows residents to enjoy peaceful, natural surroundings just moments from home.

#### **Location**

This property sits in the heart of Tupsley, an area known for its strong community spirit and wide range of amenities. Just a short walk away are local shops with a post office, butcher, pubs, a GP surgery with pharmacy, and a dentist. Families are well served by Ofsted-rated "Excellent" and "Good" primary schools, Bishop's Bluecoat secondary school, and the nearby Hereford Sixth Form College. Both Nuffield and County Hospitals are also within easy reach. For leisure, the nearby Quarry parkland offers playing fields used by junior football leagues, a large children's playground, a Scout HQ hut, and a dedicated dog park.

#### **Accommodation**

The well presented accommodation comprises: entrance hall, living room, dining room, kitchen/breakfast room, four bedrooms, family bathroom.

#### **Entrance hall**

The entrance hall forms the central circulation space of the house, providing access to the living room and kitchen/breakfast room, with the dining room accessible from both. A staircase ascends from the hall to the first floor.

#### **Living room**

The living room is an impressive reception space, perfectly suited for both everyday living and entertaining guests. A large front-facing window allows natural light to fill the room, creating a warm and inviting atmosphere. A charming decorative fireplace with an elegant surround serves as a focal point, adding character and a touch of traditional style. The room also enjoys a seamless flow into the dining room through connecting doors, enhancing the sense of space and making it ideal for social gatherings and family occasions.

#### **Dining/reception room**

Currently used as a second sitting area, this versatile dining/reception room offers a bright and welcoming space, perfect for entertaining or relaxing while enjoying views of the rear garden. Its generous layout allows for flexible use, easily adapted as a playroom, hobby room, or additional living space if desired. Sliding patio doors provide a seamless connection to the garden, enhancing indoor-outdoor living and linking directly to the adjoining kitchen for convenience.

#### **Kitchen/breakfast room**

The kitchen features modern white gloss wall and base units, offering a clean and contemporary look with ample storage throughout. Well-equipped for everyday use, it includes an integrated double electric oven, electric hob, integrated dishwasher, and designated space for both a freestanding fridge freezer and a washing machine. A stainless steel sink and drainer sit beneath a bright workspace, and the room also provides ample space for a breakfast table and chairs, creating a welcoming dining area that overlooks the rear garden.

#### **First floor**

##### **Bedroom one**

This bright and airy double bedroom offers a comfortable and versatile layout, perfect for creating a personal retreat. The room features ample floor space, allowing for a freestanding wardrobe, a dressing table or additional storage as desired. Double-aspect windows fill the room with natural light throughout the day, enhancing the sense of openness and warmth. The generous dimensions allow for easy arrangement of furniture to suit your lifestyle, making this room both practical and inviting. Ideal for those seeking a comfortable and adaptable space.

##### **Bedroom two**

A spacious double room with ample space for freestanding furniture. It features a large window that floods the room with natural light and offers a pleasant view over the rear garden.

##### **Bedroom three**

A comfortable double room with plenty of space for furniture. The room is bright and airy, featuring a large window that looks out onto the front of the property.

##### **Bedroom four**

A cosy single room, ideal for use as a guest bedroom,



home office, or personal retreat. Offers space for essential furniture such as a bed, desk, or dresser, providing both comfort and functionality.

### Family bathroom

Having modern suite with bath and shower over, wash hand basin, WC low flush suite, double glazed window and radiator.

### Outside

The rear garden features a spacious paved patio area, ideal for outdoor dining and entertaining. From the patio, steps lead up to a generous garden mainly laid to lawn, offering a versatile space for relaxation or play. A charming pond area adds interest and tranquillity, while a useful timber shed provides convenient storage. In addition, the property benefits from a single garage and driveway parking for two cars, providing excellent convenience and practicality.

### Services

We understand all mains services are connected to the property.

Herefordshire Council Tax Band - D

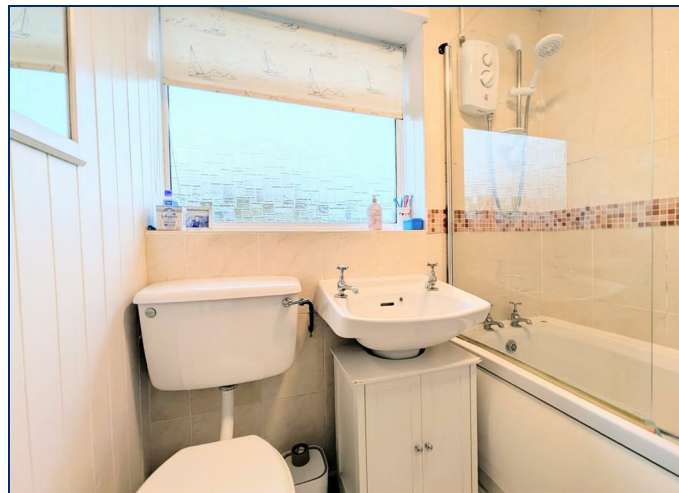
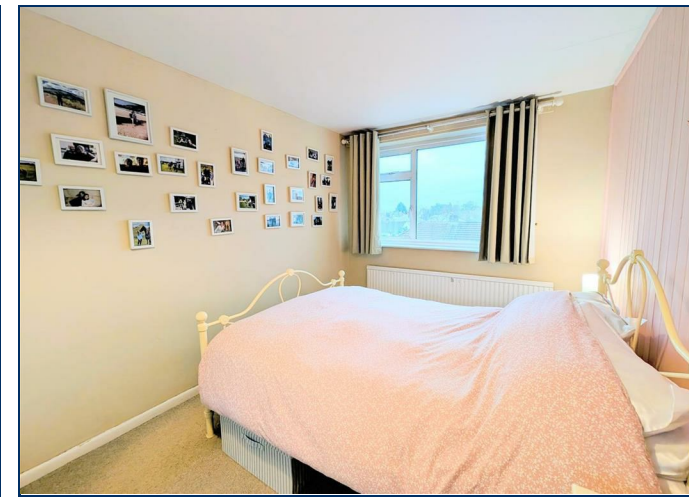
Tenure - Freehold

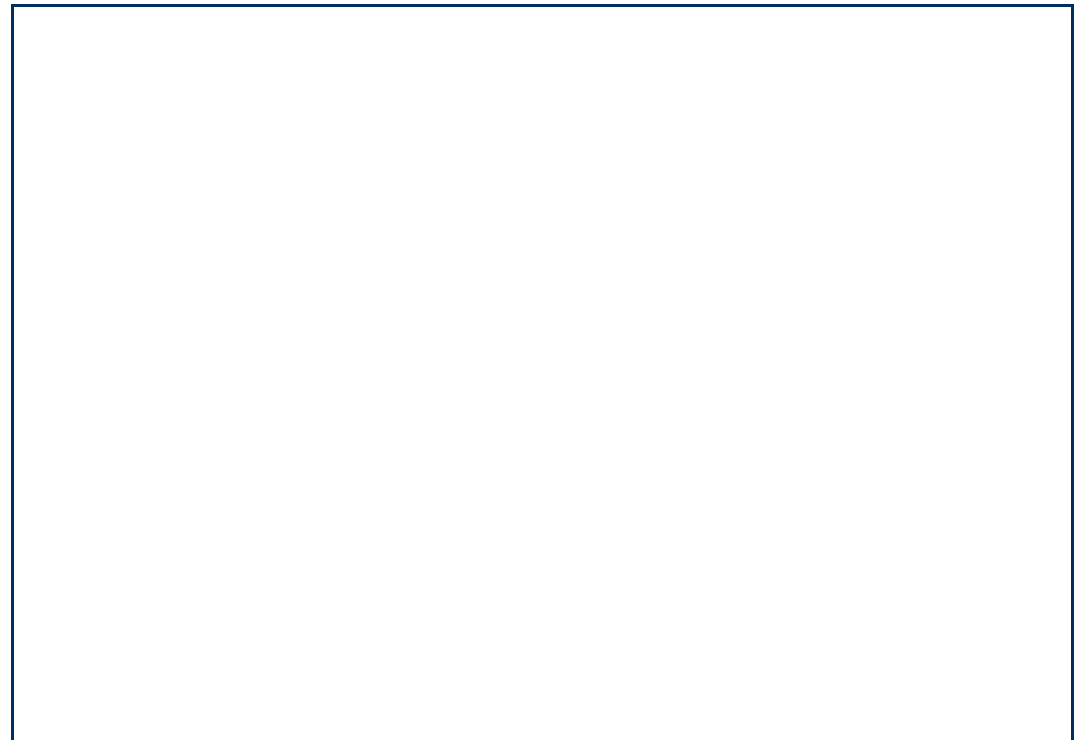
### Anti Money Laundering

The purchaser will be required to provide sufficient identification to verify their identity in compliance with anti-money laundering regulations. Please note that a fee of £18 (inclusive of VAT) per person will be charged to conduct the necessary anti-money laundering checks. This fee is payable at the time of verification and is non-refundable.

### Directions:

From Hereford take the A438 towards Ledbury. Proceed for 1 mile along Ledbury Road, straight over at the roundabout and take the next right onto Quarry Road. Take the first right onto Underhill Road, and the property can be found immediately on the left hand side.





**Sunderlands**

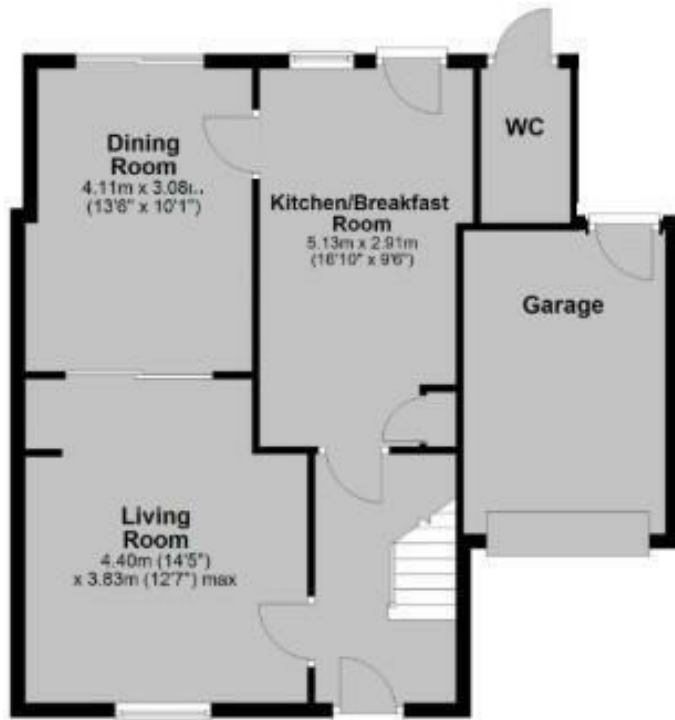
**Hereford Branch**

Offa House, St Peters Square,  
Hereford HR1 2PQ  
Tel: 01432 356 161  
Email:  
hereford@sunderlands.co.uk

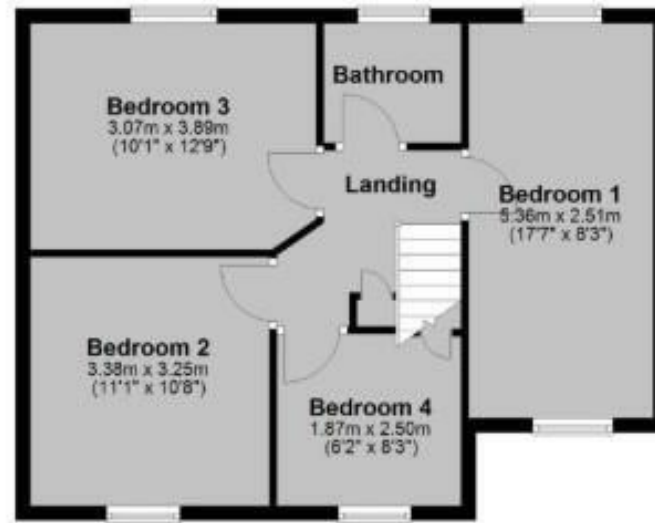
**Hay-on-Wye Branch**

3 Pavement House, The  
Pavement,  
Hay on Wye, Herefordshire HR3  
5BU  
Tel: 01497 822 522  
Email: hay@sunderlands.co.uk

**Ground Floor**



**First Floor**



Total area: approx. 123.2 sq. metres (1326.2 sq. feet)


FOR IDENTIFICATION PURPOSES ONLY - NOT TO SCALE  
Plan produced using PlanUp.

rightmove   
find your happy

Zoopla.co.uk  
Smarter property search



**Energy Efficiency Rating**

	Current	Potential
Very energy efficient - lower running costs		
(92 plus) <b>A</b>		
(81-91) <b>B</b>		
(69-80) <b>C</b>		<b>73</b>
(55-68) <b>D</b>	<b>64</b>	
(39-54) <b>E</b>		
(21-38) <b>F</b>		
(1-20) <b>G</b>		
Not energy efficient - higher running costs		
<b>England &amp; Wales</b>	EU Directive 2002/91/EC	

None of these statements contained in these particulars are to be relied upon as statements or representations of fact. These particulars are not an offer or contract or part of one. Floor plans are provided for guidance as to the layout of the property only. Room sizes and measurements are approximate only. Please note we have not tested the equipment, appliances and services in the property and interested parties are advised to commission appropriate investigation before formulating their offer for purchase. Sunderlands are a member of the 'Ombudsman for Estate Agents Scheme' OEA and therefore adhere to their Code of Practice. A copy of the Code of Practice is available on request.