



**hamlyn  
smith.**


King Alfred Close, Steyning, BN44 3YF

£1,850 Per month

# hamlyn smith.

 3 Bedrooms

 1 Reception

 1 Bathroom

A beautifully presented three-bedroom terraced home situated in the highly desirable King Alfred Close.

- Three Bedroom Terraced House
- Private Cul De Sac Location
- Sought After Location
- Energy Rating - TBC
- Council Tax Band - E
- Garage
- Neutral Decoration Throughout
- Private And Secluded Rear Garden
- Unfurnished





# hamlyn smith.

📍 50 Goldstone Villas, Hove, BN3 3RS

☎ 01273 762222

✉ hello@hamlynsmith.co.uk

Step inside to a welcoming entrance hall, which leads through to a spacious and inviting sitting room. Bathed in natural light, this elegant space features French doors overlooking the front garden, creating a bright and relaxing setting suited to both everyday living and entertaining.

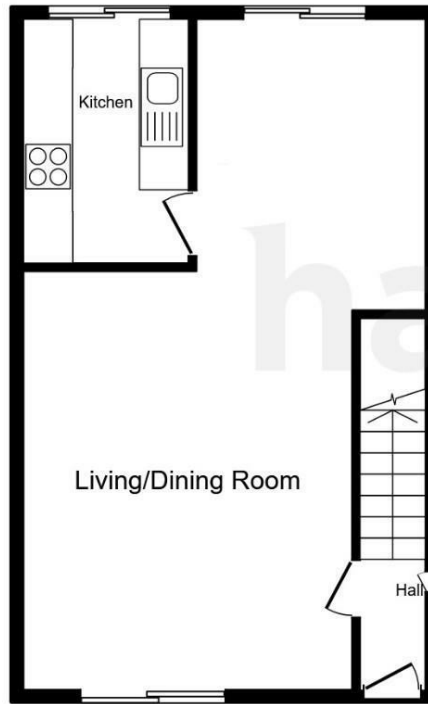
The layout flows seamlessly through to the dining area, which comfortably accommodates a full-sized table and benefits from double doors opening onto the attractive rear garden, perfectly blending indoor and outdoor living.

The kitchen is thoughtfully designed with generous worktop and cupboard space, along with provision for an undercounter washing machine. Double doors lead directly out to the garden, enhancing both practicality and convenience.

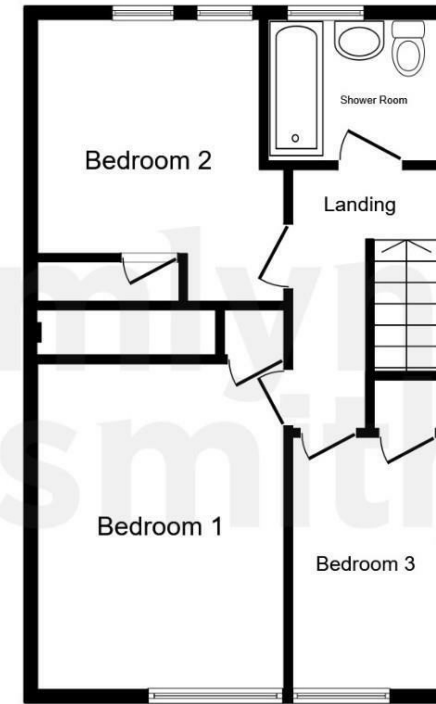
Upstairs, the principal bedroom is well-proportioned, featuring a pleasant outlook to the front of the property and fitted storage. The second bedroom is another spacious double, also benefiting from built-in storage and ample room for additional furnishings. The third bedroom would equally serve well as a study, offering flexibility to suit a variety of lifestyles. A family bathroom, fitted with a shower over bath with fitted shower screen, wash basin and WC, completes the first floor.

The rear garden is a true highlight, offering a low-maintenance patio, well-stocked flower beds and a generous seating area, ideal for outdoor dining, entertaining or simply enjoying the sunshine. The property further benefits from its own private garage, providing secure parking or valuable additional storage space.

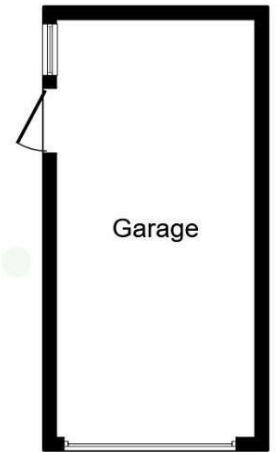
Perfectly positioned just moments from Steyning's charming High Street, the property enjoys easy access to a range of independent shops, cafés and everyday amenities. The South Downs are within close proximity, providing exceptional countryside walks, while excellent transport links offer convenient connections to Brighton, Worthing and beyond.



Ground Floor



First Floor



Garage

This floor plan is for illustrative purposes only. It is not drawn to scale. Any measurements, floor areas (including any total floor area), openings and orientations are approximate. No details are guaranteed, they cannot be relied upon for any purpose and do not form any part of any agreement. No liability is taken for any error, omission or misstatement. A party must rely upon its own inspection(s). Powered by www.Propertybox.io

