



Derwent Avenue, Didcot, Oxfordshire, OX11 7RF



## Derwent Avenue, Didcot.

A two bedroom semi detached house which comes to market chain free.

The welcoming entrance has space for coats and shoes and leads into the kitchen which has ample storage and space for white goods. The comfortable bright and airy lounge has a door leading out into the garden.

The first floor offers two double bedrooms and the family bathroom. There is driveway parking to the side of the property and the benefit of an additional space in the nearby parking area. The garden to the rear of the property is mainly laid to lawn with a patio area, perfect for Summer entertaining.

Situated on the Ladygrove development the property is within easy walking distance of the amenities which include the Ladygrove Pub, Co-Op and Oak Tree Doctors surgery. You are close to Ladygrove lakes and the Loop perfect for walking and close to the playpark. Transport connections are another key attraction. Didcot Parkway station is close by, offering fast and reliable services to London, Oxford, Reading, and beyond-making Ladygrove an excellent choice for commuters looking for extra space and a calmer pace of life without compromising on connectivity. Combined with its vibrant local facilities and appealing surroundings, Ladygrove continues to stand out as one of Didcot's most desirable places to call home.



- Two bedroom semi detached house situated on Derwent Avenue, Didcot.
- Coming to market chain free.
- Kitchen has good storage and space for white goods.
- Comfortable lounge with door leading out into the garden.
- Two double bedrooms.
- Family bathroom with shower over the bath.
- Garden is mainly laid to lawn with a patio area and mature shrubs and trees.
- Driveway parking and additional space in nearby parking area.

2		bedrooms
1		receptions
1		bathrooms

Council Tax Band: C

Tenure: Freehold

EPC Rating: C



The comfortable bright and airy lounge has a door leading out into the garden.



The first floor offers two double bedrooms and the family bathroom.







The garden to the rear of the property is mainly laid to lawn with a patio area, perfect for Summer entertaining.



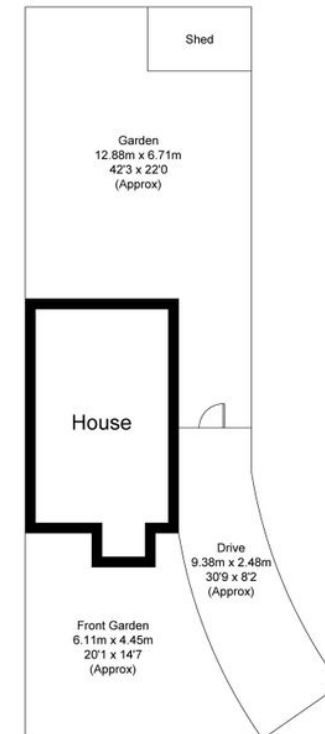
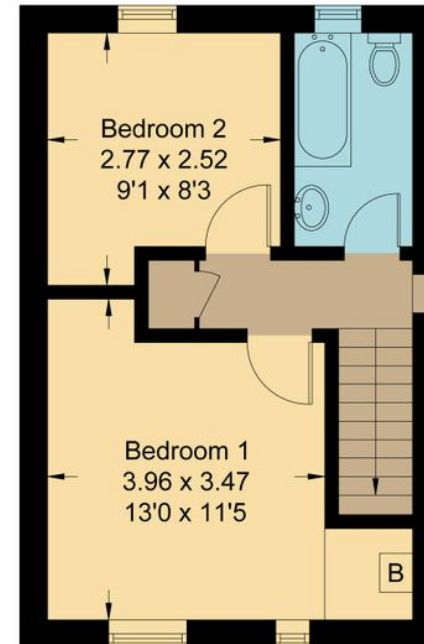
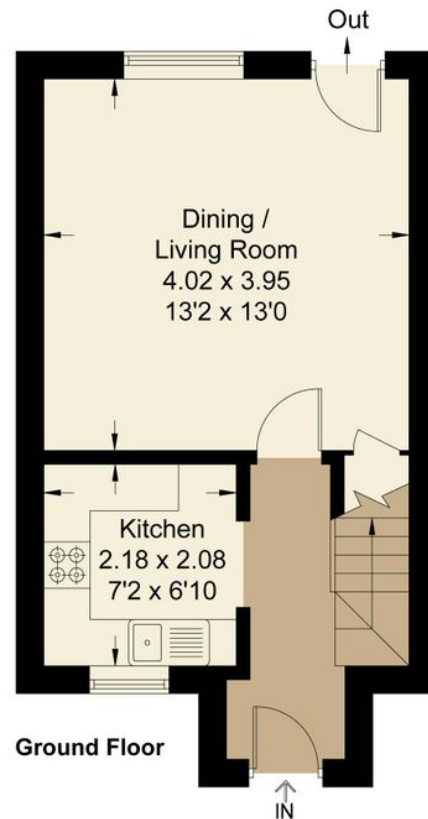
# Derwent Avenue, OX11

Approximate Gross Internal Area = 51.50 sq m / 554 sq ft

For identification only - Not to scale



(Not Shown In Actual  
Location / Orientation)



Not to scale, for illustration and layout purposes only.  
© Mortimer Photography. Produced for Hodsons.  
Unauthorised reproduction prohibited