



Pear Tree Close, Scarborough

North Yorkshire, YO11 3US

Asking Price £650,000



Pear Tree Close, Scarborough

DESCRIPTION

Welcome to this exclusive development, an exclusive release of just three beautifully crafted four-bedroom homes, combining energy efficiency, high-spec finishes, and contemporary design in a prime coastal location.

Each home offers four spacious bedrooms, a single garage, and private parking, making them ideal for families and professionals alike. From the upper floors, enjoy stunning sea and castle views, adding a truly special backdrop to your everyday living.

Designed with comfort and quality in mind, these homes feature high-performing timber frame walls for exceptional insulation and energy efficiency. Bright and airy interiors are enhanced by double glazed windows and bi-fold doors, while composite external doors provide both security and style.

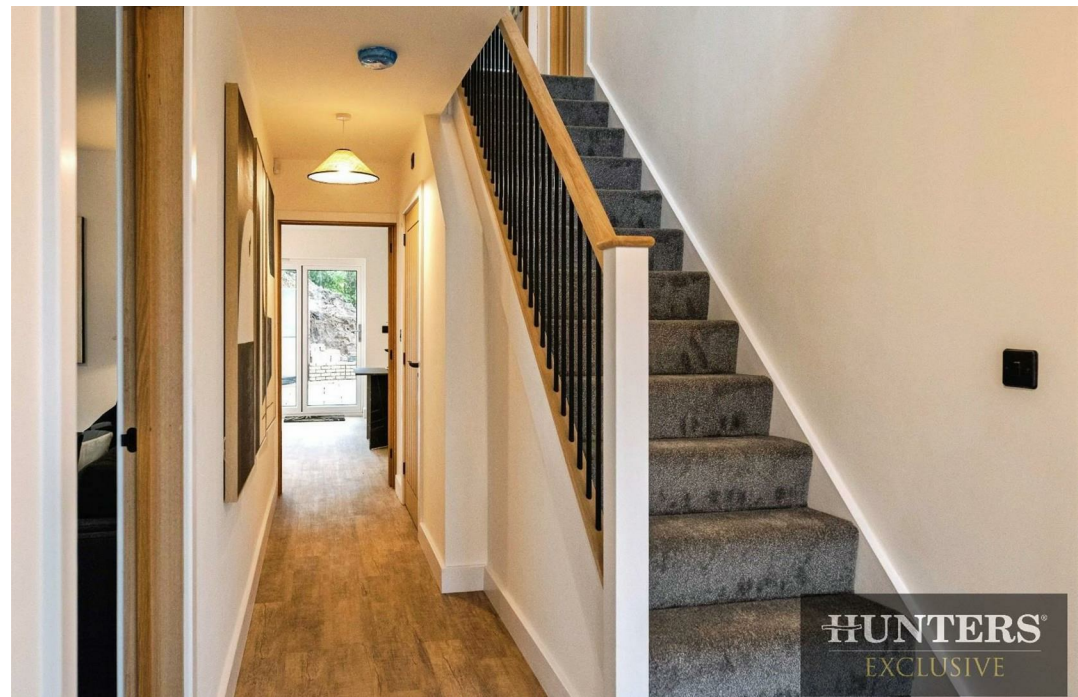
The homes benefit from underfloor heating on the ground floor and radiators upstairs, with floor finishes included throughout — LVT to most of the ground floor, carpet in the lounge and bedrooms, and stylish tiles in the bathrooms.

Kitchens and bathrooms are individually designed by a professional interior designer, offering a truly bespoke finish. Each kitchen comes complete with a quartz worktop, integrated fridge freezer, hob, oven, and dishwasher, with space for a washing machine in the utility room. Buy off-plan and you can choose your kitchen in black, green, or white — giving you a say in the style of your new home.

Elegant oak internal doors, black plug sockets, switches, and door handles, and a neutral paint scheme throughout add to the refined look and feel. Every home is protected by a 10-year structural warranty, offering long-term peace of mind.

Only two plots remaining! Don't miss your opportunity to secure one of these exceptional 4-bedroom homes with breathtaking sea and castle views. Register your interest today!



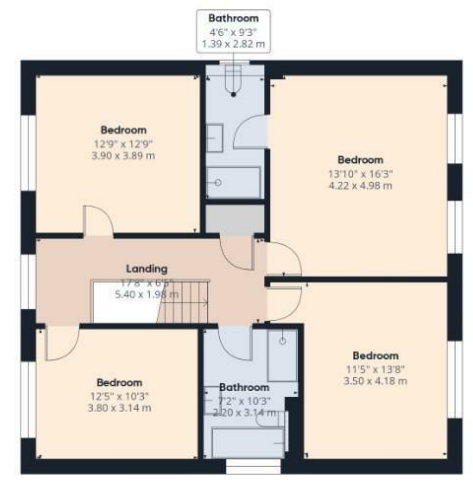


HUNTERS[®]
EXCLUSIVE



Ground Floor

Approximate total area⁽¹⁾
2028 ft²
188.5 m²



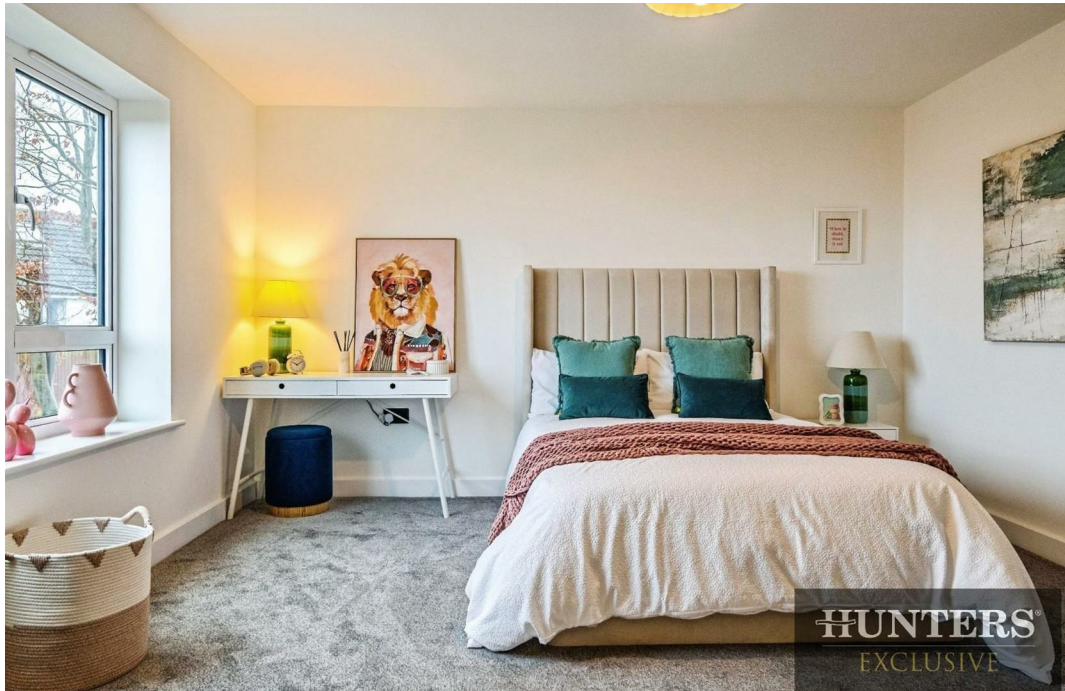
Floor 1



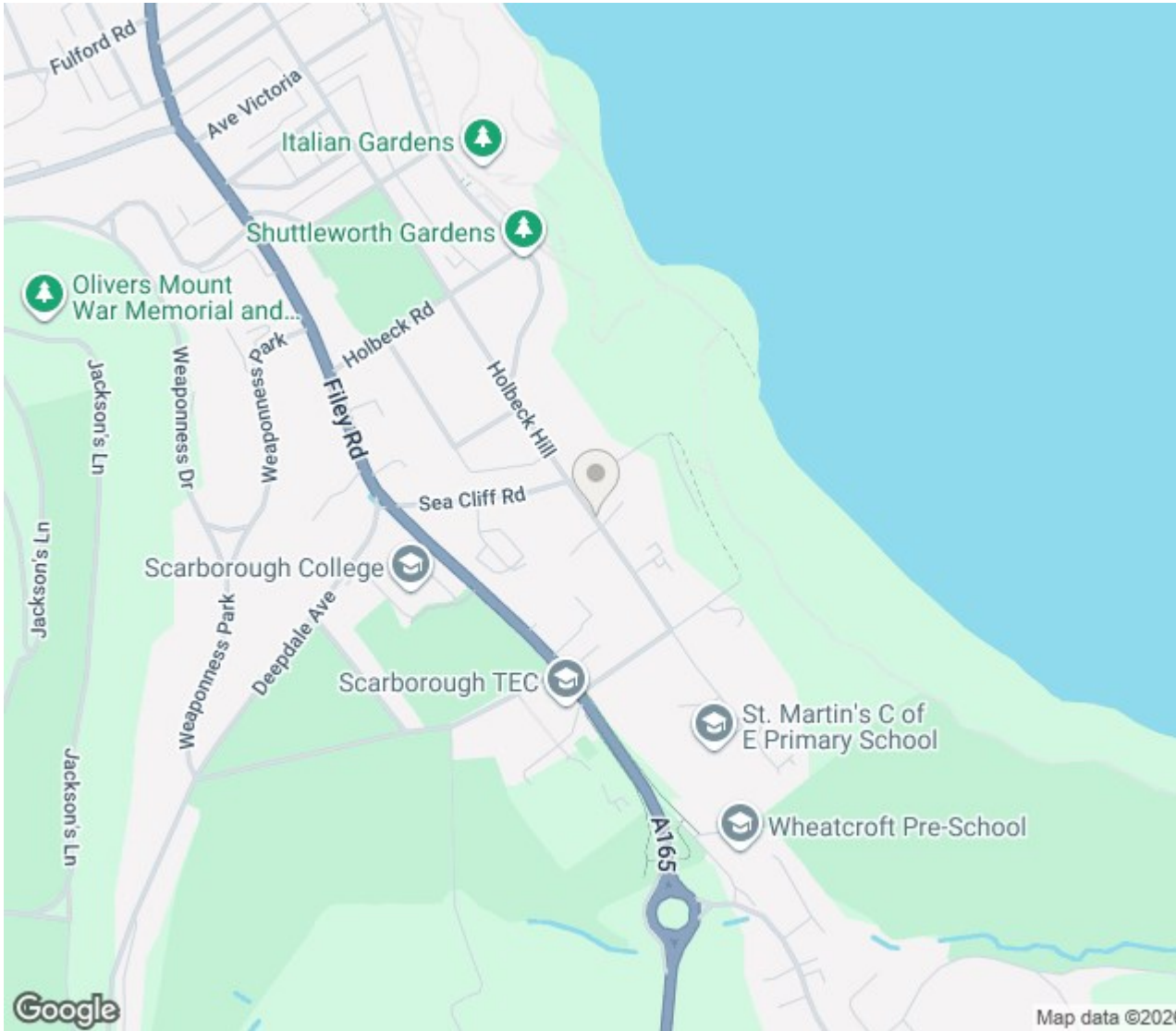
(1) Excluding balconies and terraces

Calculations reference the RICS IPMS 3C standard. Measurements are approximate and not to scale. This floor plan is intended for illustration only.

GIRAFFE360



HUNTERS
EXCLUSIVE



ENERGY PERFORMANCE CERTIFICATE

Energy Efficiency Rating		
	Current	Potential
Very energy efficient - lower running costs		
(92 plus) A	96	96
(81-91) B		
(69-80) C		
(55-68) D		
(39-54) E		
(21-38) F		
(1-20) G		
Not energy efficient - higher running costs		
England & Wales	EU Directive 2002/91/EC	

Thinking of Selling?

If you are thinking of selling your home or just curious to discover the value of your property, Hunters would be pleased to provide free, no obligation sales and marketing advice. Even if your home is outside the area covered by our local offices we can arrange a Market Appraisal through our national network of Hunters estate agents.

33 Huntriss Row, Scarborough, YO11 2ED | 01723 336760 | scarborough@hunters.com



