



## Fountain Park Way, W12

£876 Per week

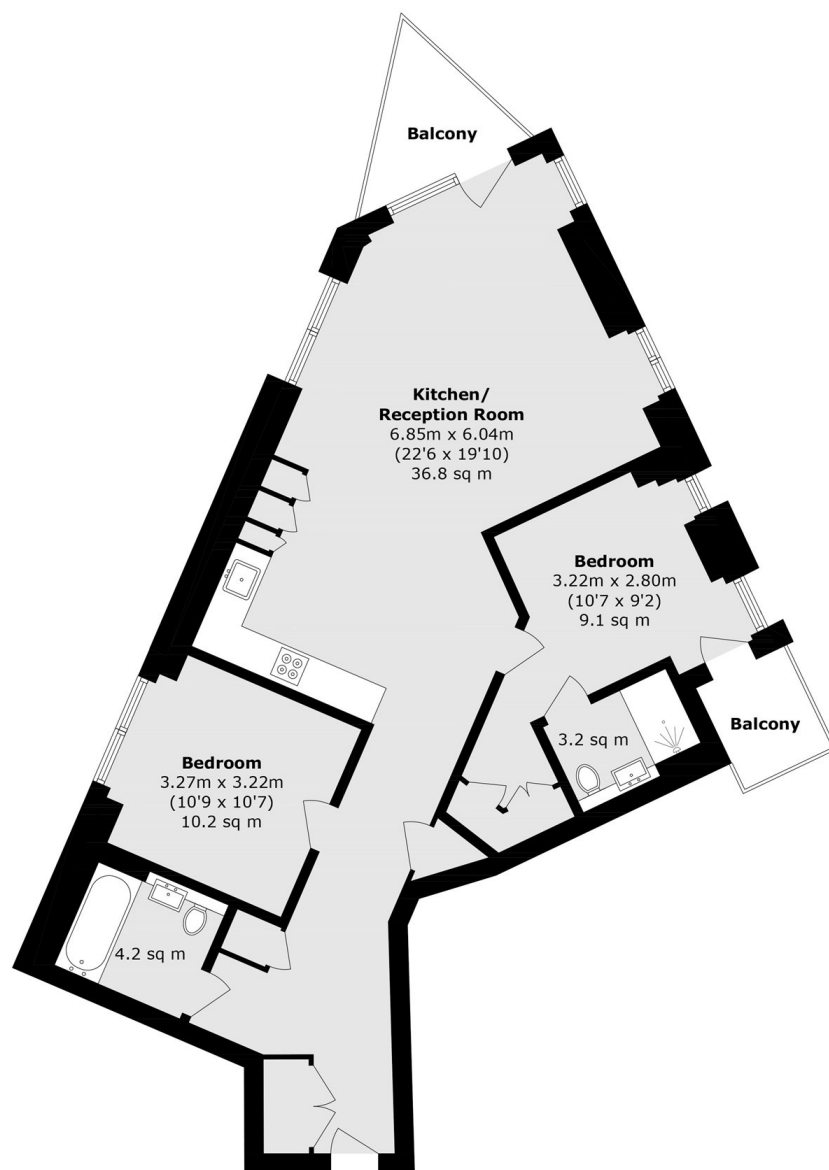
Situated within the prestigious White City Living development on the 7th floor, this stunning two-bedroom, two-bathroom apartment in Westmont Apartments offers contemporary high-rise living in one of West London's most sought-after neighbourhoods. The property features a spacious open-plan living and dining area, designed with floor-to-ceiling windows that flood the space with natural light. The modern fully-fitted kitchen includes high-spec integrated appliances and sleek finishes, ideal for both everyday living and entertaining. Both double bedrooms are generously sized, with the principal bedroom benefiting from a stylish en-suite bathroom and built-in storage. A second modern bathroom serves the rest of the apartment, finished to a high standard throughout. A standout feature is the two private balconies, offering elevated views across the beautifully landscaped development and city skyline perfect for relaxing or entertaining outdoors.

The property is ideally located close to the open spaces of Holland Park & Shepherds Bush Green; ideal for outdoor pursuits. Westfield shopping centre is within walking distance and offers a range of amenities that includes a cinema, designer shops, eateries and children's play activities. Other nearby amenities include a selection of theatres, lively bars, nightclubs, restaurants and cafes

### Features

- Two Bedrooms
- Two Bathrooms
- Two Balconies
- 24 Hour Concierge
- Lift Access
- Residents Lounge

Fountain Park Way,  
LONDON, W12



Total area (approx.): 85.0 sq. m (914.9 sq. ft)  
Balcony area (approx.): 6.8 sq. m (73.2 sq. ft)

**Dexters**

Shepherds Bush and Brook Green  
53 Shepherds Bush Green  
London  
W12 8PS  
Lettings  
020 8723 8899

Energy Rating: B. We aim to make our particulars both accurate and reliable. However they are not guaranteed; nor do they form part of an offer or contract. If you require clarification on any points then please contact us, especially if you're traveling some distance to view. Please note that appliances and heating systems have not been tested and therefore no warranties can be given as to their good working order.

 **RICS** | Regulated  
Estate Agent  
and Letting Agent

dexters.co.uk