



**RAWLINSON
&WEBBER.**

First Avenue, West Molesey
Asking Price £425,000 Freehold

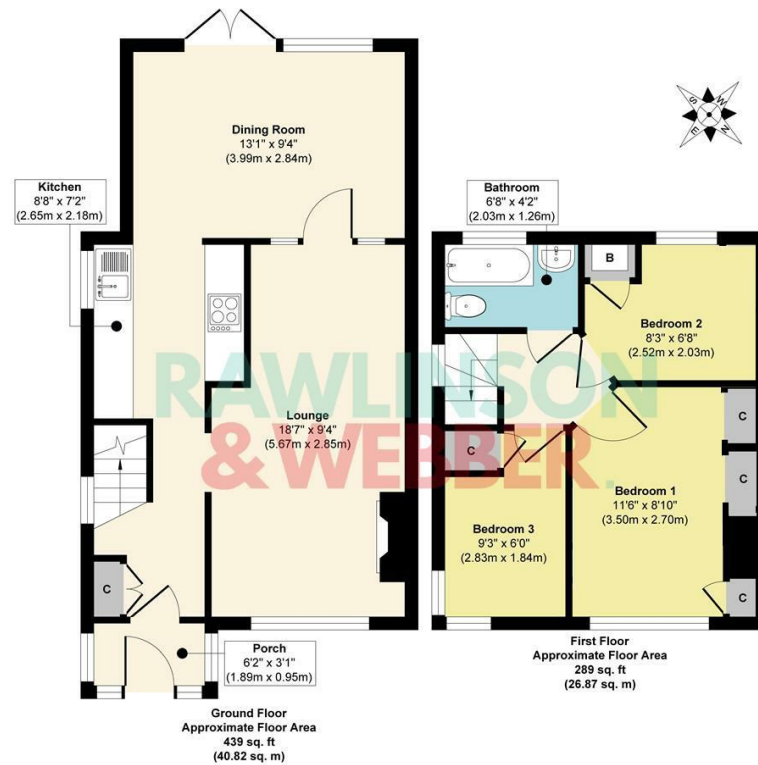
RAWLINSON
&WEBBER

RAWLINSON
&WEBBER

Property Description

Rawlinson and Webber are pleased to offer this lovely 3- BEDROOM SEMI-DETACHED House in WEST MOLESEY. The property benefits from a lounge, kitchen, dining Room, 3 bedrooms, family bathroom and has ample built-in storage. The property benefits from a wide SIDE ACCESS and LARGE REAR GARDEN which could enable further extension (subject to Planning) as well as a GARAGE to the back of the property. We highly recommend an early viewing.

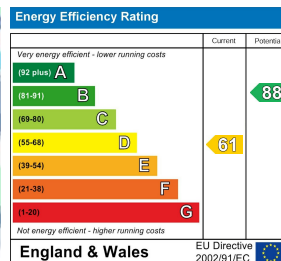
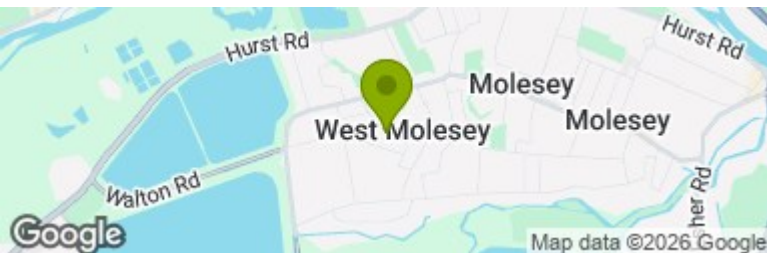
Situated in a much sought-after location in West Molesey. Close to the River Thames and within easy access of East & West Molesey Villages, excellent schools, supermarkets and local amenities. Hampton Court Station is the local train station and there is a bus service connecting with Kingston and Walton on Thames. Bridge Road with its bustling cafés, restaurants, boutiques and antique shops is a short distance away.



Approx. Gross Internal Floor Area 728 sq. ft / 67.69 sq. m
Illustration for identification purposes only, measurements are approximate, not to scale.
Produced by Elements Property

Features

- 3 BEDROOMS
- LOUNGE
- KITCHEN
- DINING ROOM
- FAMILY BATHROOM
- PORCH
- FRONT & REAR GARDEN
- GARAGE
- SIDE AND REAR ACCESS
- NO CHAIN



Council Tax Band:

C

EPC Rating:

D