



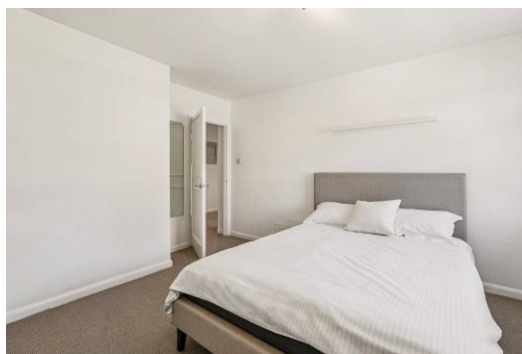
Elm Park Gardens

Chelsea, SW10

£2,800 per month
(£646.15 per week)

A well laid out one bedroom flat in this brilliantly located building just off popular Fulham Road. Situated on 5th floor with lift, the property has a bright reception room, separate kitchen, modern bathroom and large double bedroom.

CHESTERTONS



Elm Park Gardens

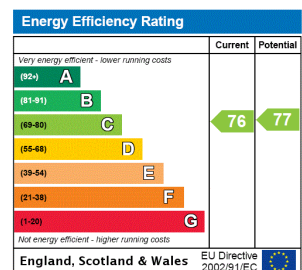
Chelsea, SW10

- One Bedroom
- Lift
- Furnished
- Separate Kitchen
- Available Now
- Garden Access
- Additional Storage Space



A well laid out ONE BEDROOM flat in this brilliantly located building just off popular Fulham Road. Situated on 3rd floor, with lift, the property has a bright reception room, separate kitchen, modern bathroom and large double bedroom.

Minimum Term: 12 months
Deposit Required: £3,230.77
Local Authority: Kensington and Chelsea
Council Tax Band:
EPC Rating: C
Furnished



Chestertons Chelsea Lettings

17 Cale Street
 London
 SW3 3QR
 chelsealettingsusers@chestertons.co.uk
 02075944750
 chestertons.co.uk

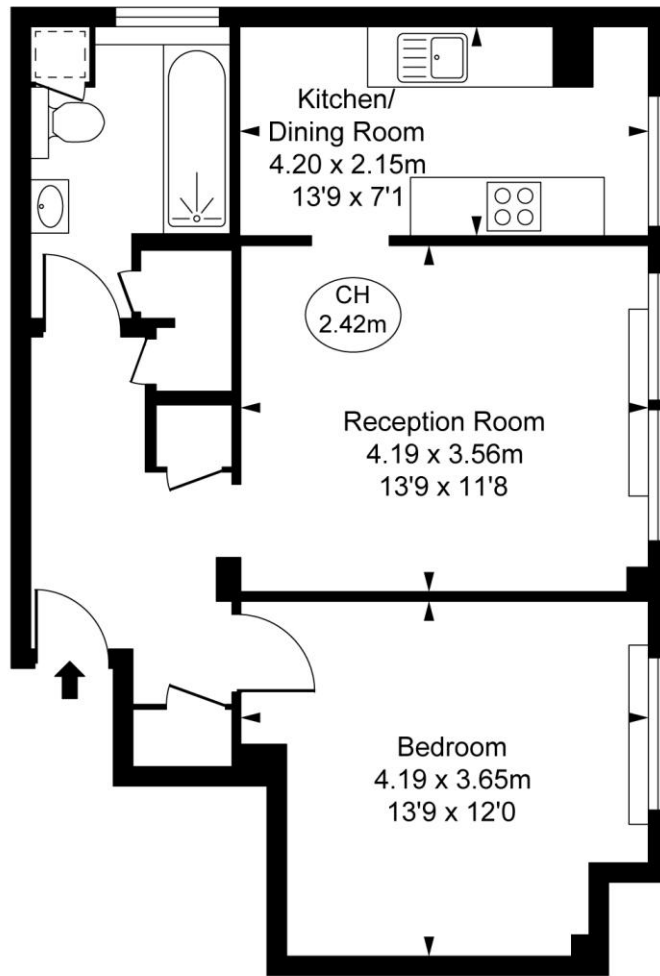
Additional tenant charges apply (fees apply to non-AST tenancies only)
 Tenancy Agreement Fee: £300
 References per Tenant/Guarantor: £60
 Inventory check (approx. £100 – £250 inc. VAT)
 chestertons.co.uk/property-to-rent/applicable-fees

Elm Park Gardens, SW10

Approximate Gross Internal Area
53.72 sq m / 578 sq ft

(Including restricted height
under 1.5m [-----])

(CH = Ceiling Heights)



Fifth Floor

This plan is not to scale. It is for guidance and not for valuation purposes.
All measurements and areas are approximate only, and have been prepared in accordance with the current edition of the RICS Code of Measuring Practice.
© Fulham Performance

