



Howard Morley
& Sons

PER MONTH

£5,000 Per Month

The Common

Cranleigh, GU6 8NS



Approximate Gross Internal Area
 214.10 sq m / 2304.55 sq ft
 (Excludes Garage & Garden Room)
 Garage Area 36.0 sq m / 387.50 sq ft
 Garden Room Area 10.41 sq m / 112.05 sq ft

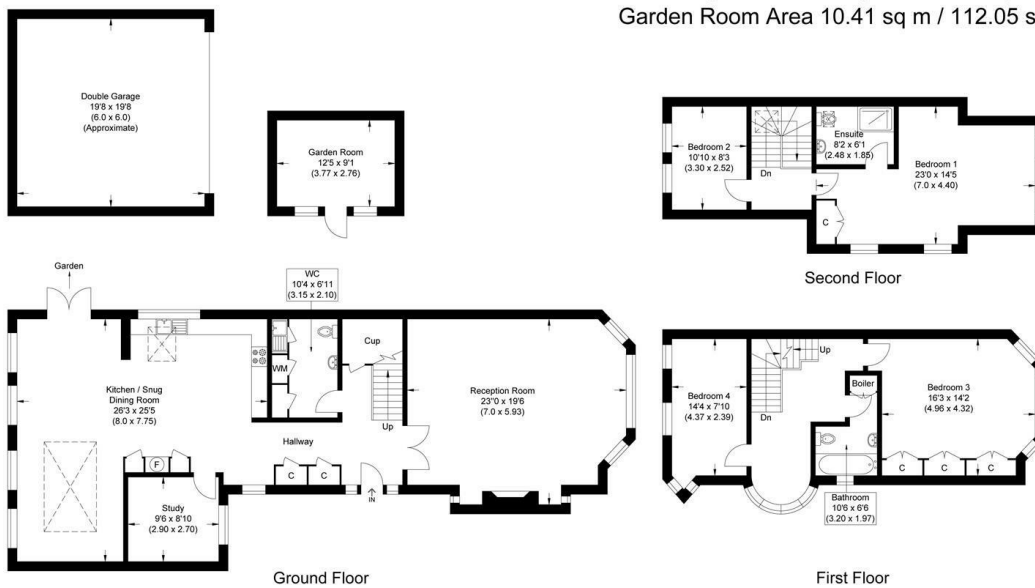
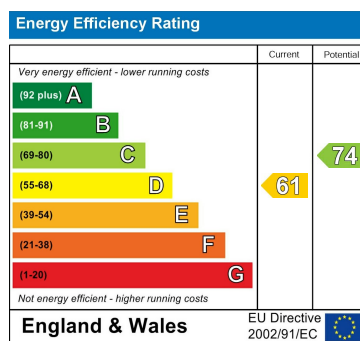


Illustration for identification purposes only, measurements are approximate, not to scale.



Agents Note: Whilst every care has been taken to prepare these particulars, they are for guidance purposes only. All measurements are approximate and are for general guidance purposes only and whilst every care has been taken to ensure their accuracy, they should not be relied upon and potential buyers/tenants are advised to recheck the measurements

Howard Morley & Sons

OFFICE ADDRESS
 276 High Street
 Guildford
 Surrey
 GU1 3JL

OFFICE DETAILS
 01483 575 304
 lettings@hmorley.co.uk
 hmorley.co.uk