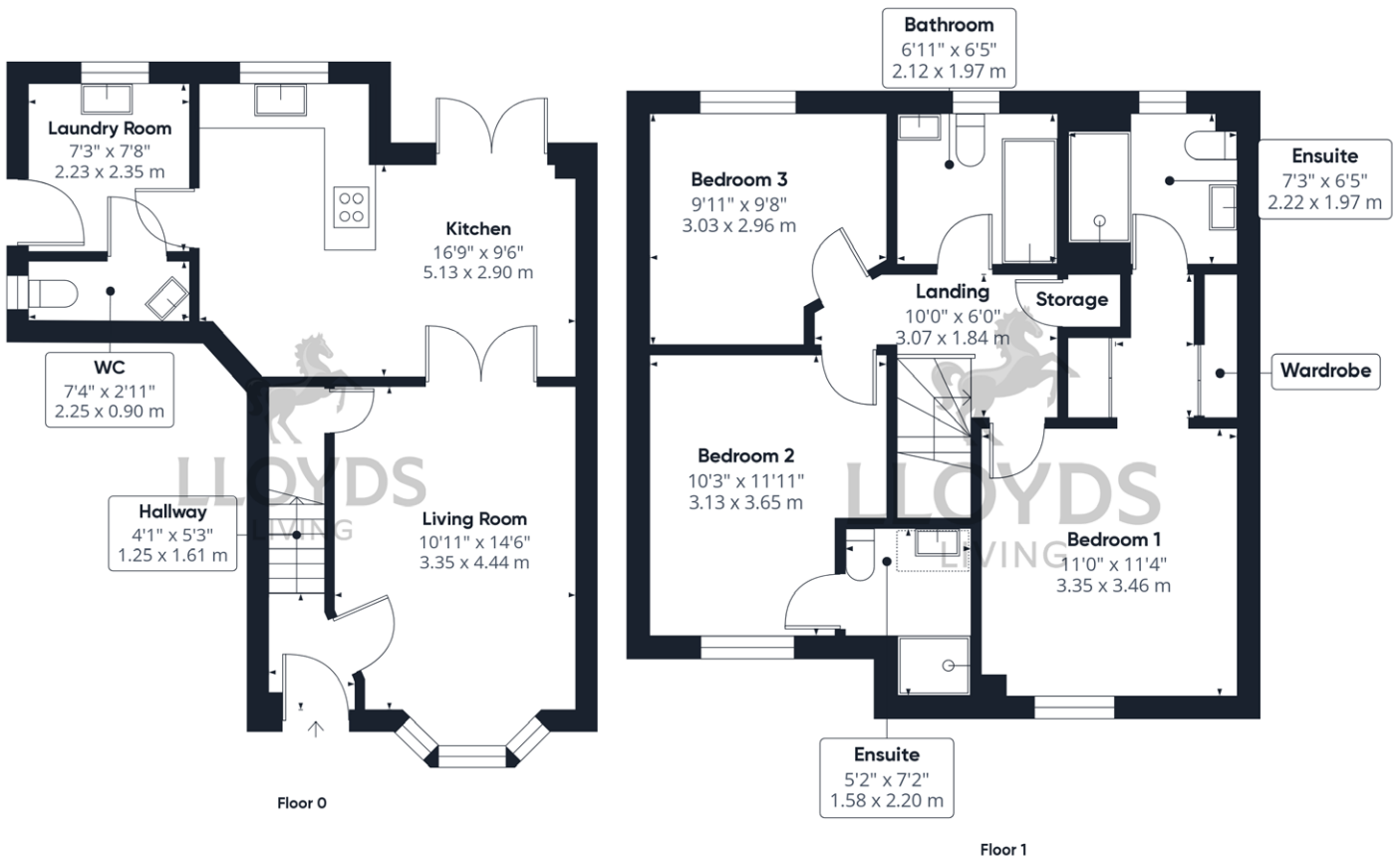


Axbridge

(3 bedrooms) 103.9 sq m / 1,119 ft

This 3-bedroom property with garage provides plenty of scope for family life and entertaining. Wander from the lounge, with statement bay window, to the open-plan kitchen/dining area. Open the double glass patio doors to enjoy your private landscaped garden. A separate utility room keeps household chores behind closed doors.



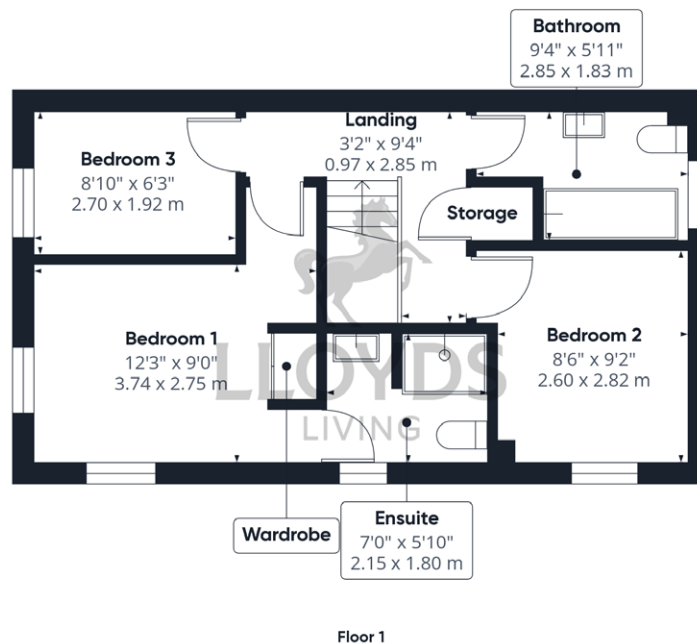
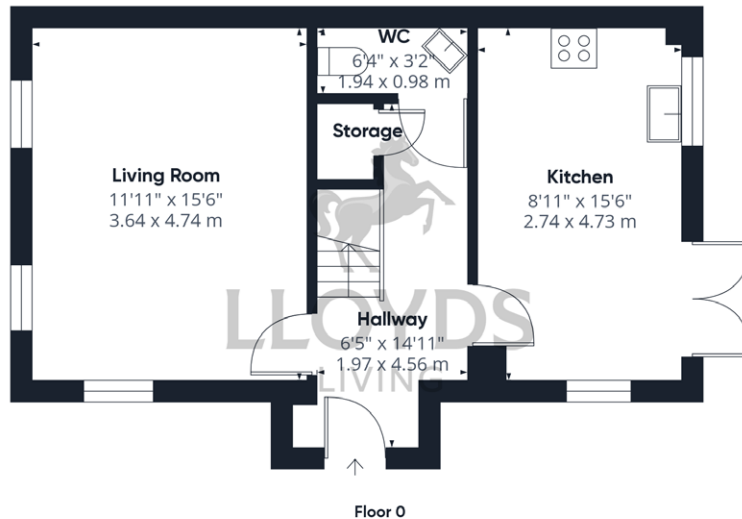
All details provided are indicative and intended to act as a guide only and may change. These details should be treated as general guidance only and cannot be relied upon as accurately describing any of the specified matters prescribed by any order under the Consumer Protection from Unfair Trading Regulations 2008. Nor do they constitute a contract or a warranty. Dimensions should not be used for carpet sizes, appliances or furniture. Lloyds Living operate a policy of continuous product development and individual features such as specification, windows and elevational treatments may vary.

Whilst every attempt has been made to ensure the accuracy of the floorplan contained in this brochure, measurements of doors, windows, rooms and any other items are approximate and no responsibility is taken for any error, omission, or mis-statement. The measurements should not be relied upon for valuation, transaction and/or funding purposes. This plan is for illustrative purposes only and should be used as such by any prospective purchaser or tenant.

Capesthorpe

(3 bedrooms) 87.9sq m / 947 ft

The formal lounge leads to the open-plan kitchen/dining areas via double doors ensuring ease of movement throughout the ground floor. A separate utility room keeps mess to a minimum, while the integrated garage, with electric car charger, provides extra storage space for bikes and larger household items. Three spacious bedrooms, the largest with en suite, and a family bathroom provide plenty of personal space for everyone.



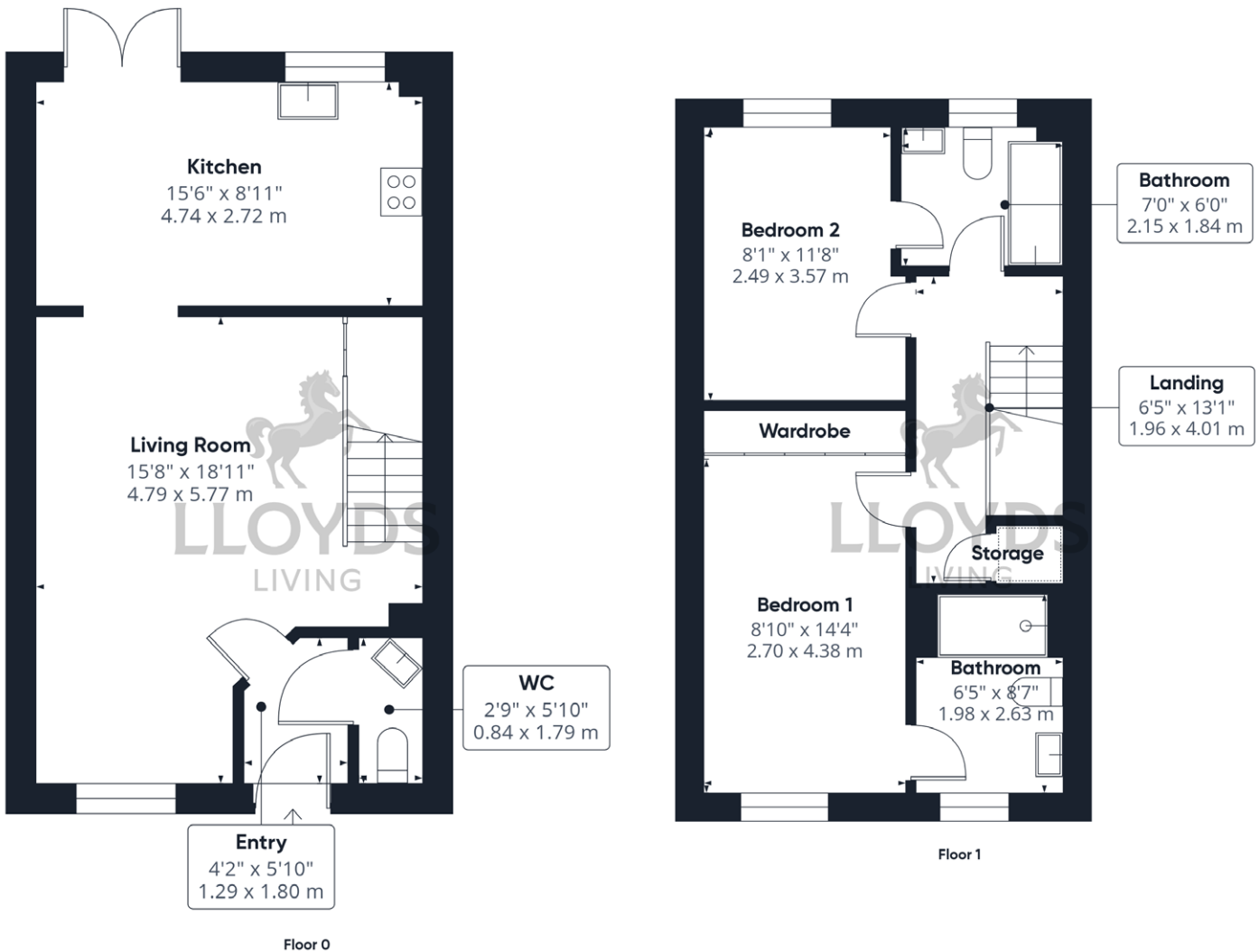
All details provided are indicative and intended to act as a guide only and may change. These details should be treated as general guidance only and cannot be relied upon as accurately describing any of the specified matters prescribed by any order under the Consumer Protection from Unfair Trading Regulations 2008. Nor do they constitute a contract or a warranty. Dimensions should not be used for carpet sizes, appliances or furniture. Lloyds Living operate a policy of continuous product development and individual features such as specification, windows and elevational treatments may vary.

Whilst every attempt has been made to ensure the accuracy of the floorplan contained in this brochure, measurements of doors, windows, rooms and any other items are approximate and no responsibility is taken for any error, omission, or mis-statement. The measurements should not be relied upon for valuation, transaction and/or funding purposes. This plan is for illustrative purposes only and should be used as such by any prospective purchaser or tenant.

Daresbury

(2 bedrooms) 86.7 sq m / 934 ft

A dramatic entrance to the generous lounge is sure to impress guests. Step through to the open plan kitchen/dining area complete with the latest Bosch integrated appliances. Open the patio doors in warmer months to take life al fresco. Two bedrooms, bathroom and en suite on the first floor complete this family home.



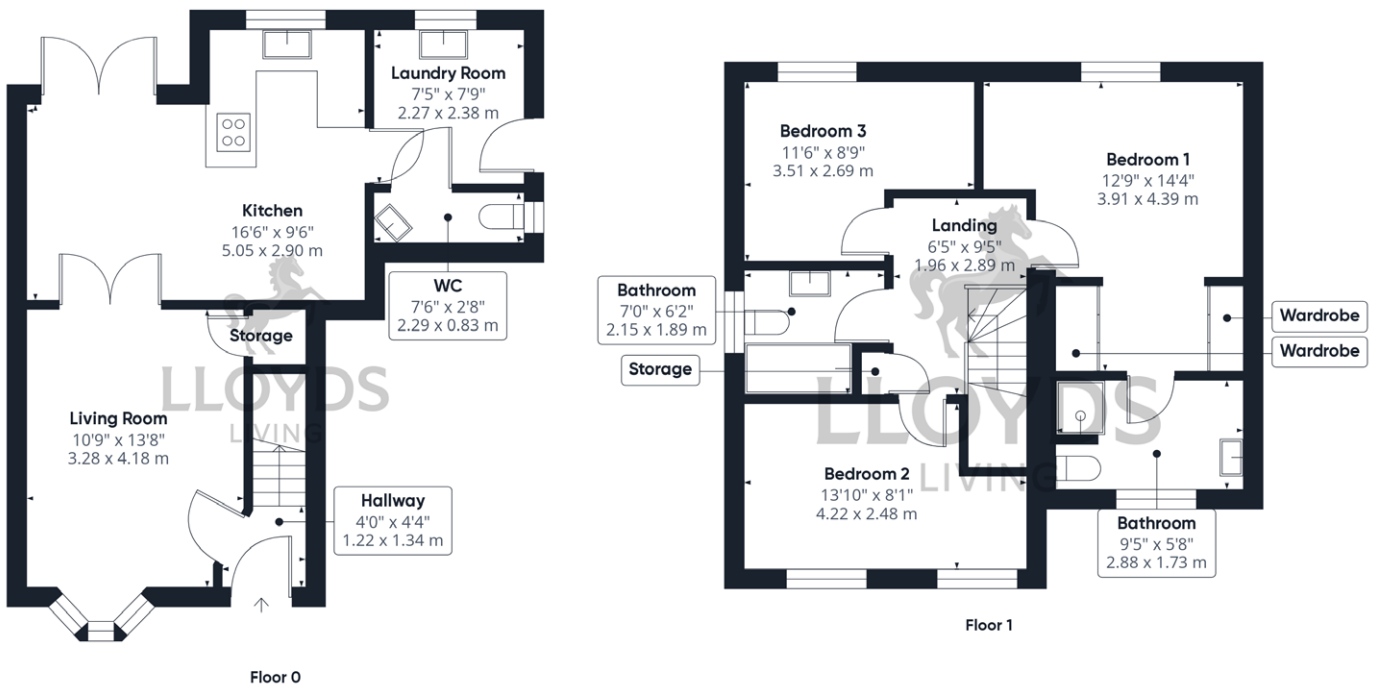
All details provided are indicative and intended to act as a guide only and may change. These details should be treated as general guidance only and cannot be relied upon as accurately describing any of the specified matters prescribed by any order under the Consumer Protection from Unfair Trading Regulations 2008. Nor do they constitute a contract or a warranty. Dimensions should not be used for carpet sizes, appliances or furniture. Lloyds Living operate a policy of continuous product development and individual features such as specification, windows and elevational treatments may vary.

Whilst every attempt has been made to ensure the accuracy of the floorplan contained in this brochure, measurements of doors, windows, rooms and any other items are approximate and no responsibility is taken for any error, omission, or mis-statement. The measurements should not be relied upon for valuation, transaction and/or funding purposes. This plan is for illustrative purposes only and should be used as such by any prospective purchaser or tenant.

Knutsford

(3 bedrooms) 98.1 sq m / 1,056 ft

The formal lounge leads to the open-plan kitchen/dining areas via double doors ensuring ease of movement throughout the ground floor. A separate utility room keeps mess to a minimum, while the integrated garage, with electric car charger, provides extra storage space for bikes and larger household items. Three spacious bedrooms, the largest with en suite, and a family bathroom provide plenty of personal space for everyone.



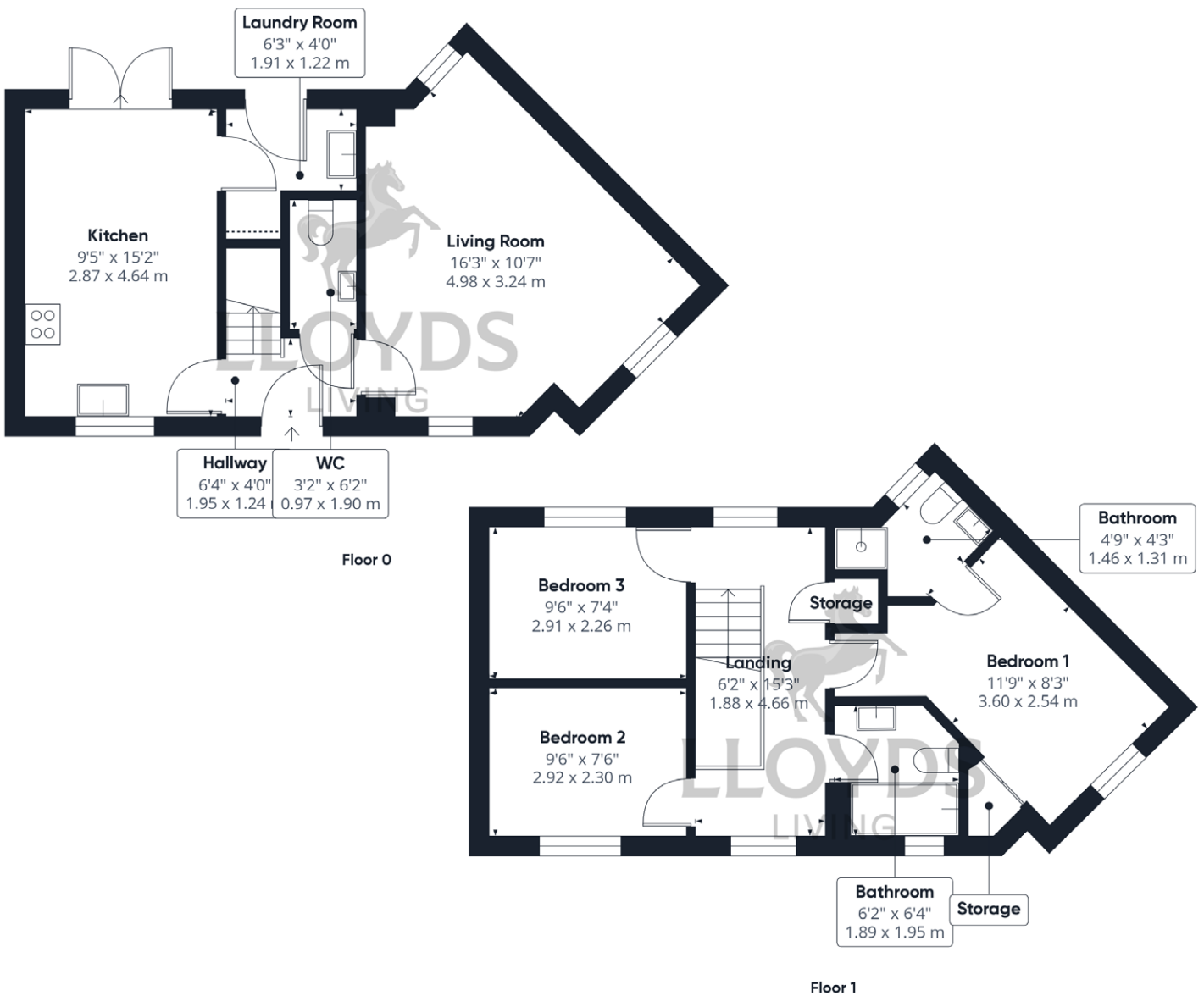
All details provided are indicative and intended to act as a guide only and may change. These details should be treated as general guidance only and cannot be relied upon as accurately describing any of the specified matters prescribed by any order under the Consumer Protection from Unfair Trading Regulations 2008. Nor do they constitute a contract or a warranty. Dimensions should not be used for carpet sizes, appliances or furniture. Lloyds Living operate a policy of continuous product development and individual features such as specification, windows and elevational treatments may vary.

Whilst every attempt has been made to ensure the accuracy of the floorplan contained in this brochure, measurements of doors, windows, rooms and any other items are approximate and no responsibility is taken for any error, omission, or mis-statement. The measurements should not be relied upon for valuation, transaction and/or funding purposes. This plan is for illustrative purposes only and should be used as such by any prospective purchaser or tenant.

Dalton

(3 bedrooms) 87.1 sq m / 938 ft

A dual aspect spacious living room with windows to the front and rear allows plenty of natural light to fill the room, perfect for entertaining guests. The thoughtfully designed kitchen is fitted with the latest integrated appliances, with French doors leading out to the garden and patio area. This modern family home is completed with three bedrooms upstairs, alongside a stylish en suite and family bathroom.



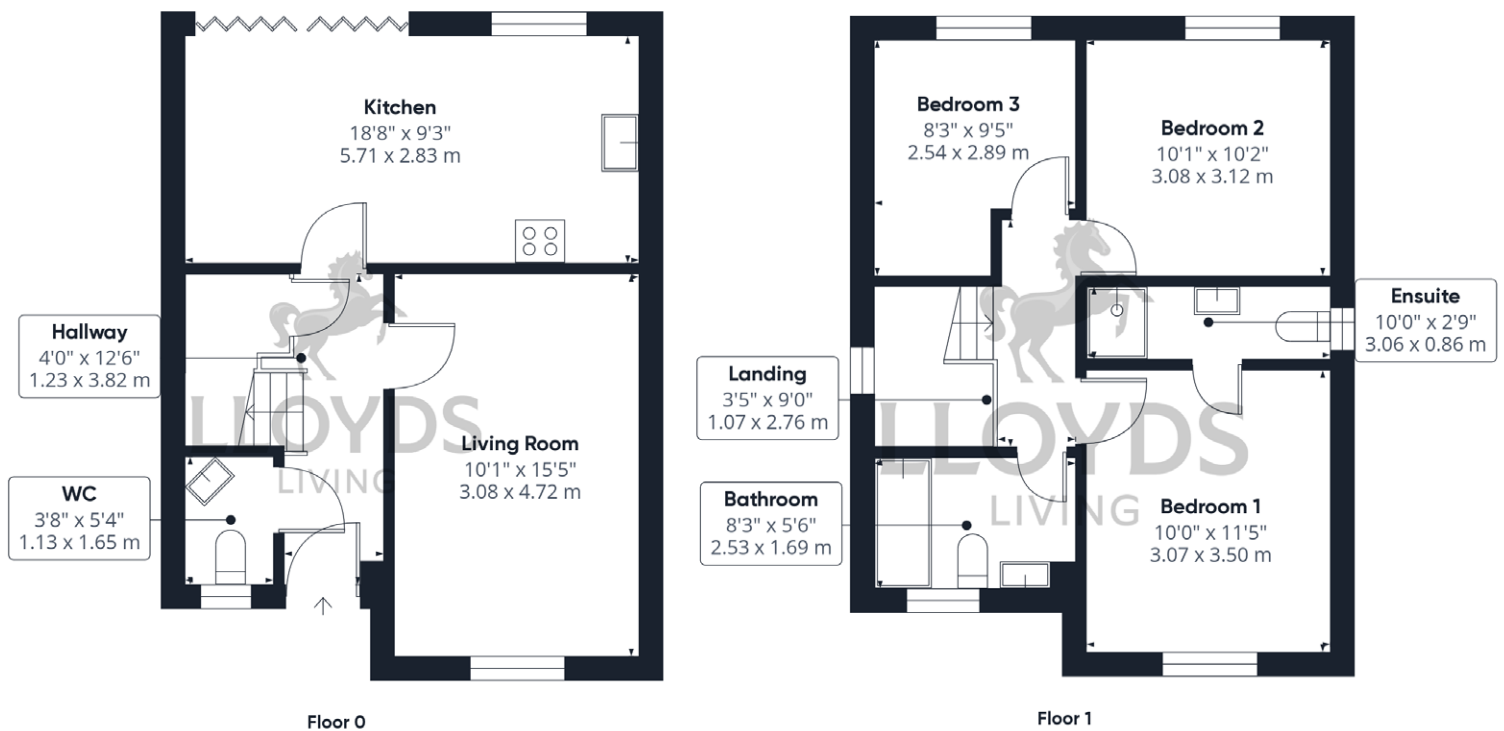
All details provided are indicative and intended to act as a guide only and may change. These details should be treated as general guidance only and cannot be relied upon as accurately describing any of the specified matters prescribed by any order under the Consumer Protection from Unfair Trading Regulations 2008. Nor do they constitute a contract or a warranty. Dimensions should not be used for carpet sizes, appliances or furniture. Lloyds Living operate a policy of continuous product development and individual features such as specification, windows and elevational treatments may vary.

Whilst every attempt has been made to ensure the accuracy of the floorplan contained in this brochure, measurements of doors, windows, rooms and any other items are approximate and no responsibility is taken for any error, omission, or mis-statement. The measurements should not be relied upon for valuation, transaction and/or funding purposes. This plan is for illustrative purposes only and should be used as such by any prospective purchaser or tenant.

Davenham

(3 bedrooms) 88.9 sq m / 957 ft

This striking three bedroom home features a spacious living room and a sociable kitchen/dining area with plenty of natural light. The kitchen is fully equipped with integrated appliances and the dining area has ample space for entertaining guests with bi fold doors leading out to the garden and patio area. Three bedrooms, an en suite and a bathroom on the first floor complete this family home.



All details provided are indicative and intended to act as a guide only and may change. These details should be treated as general guidance only and cannot be relied upon as accurately describing any of the specified matters prescribed by any order under the Consumer Protection from Unfair Trading Regulations 2008. Nor do they constitute a contract or a warranty. Dimensions should not be used for carpet sizes, appliances or furniture. Lloyds Living operate a policy of continuous product development and individual features such as specification, windows and elevational treatments may vary.

Whilst every attempt has been made to ensure the accuracy of the floorplan contained in this brochure, measurements of doors, windows, rooms and any other items are approximate and no responsibility is taken for any error, omission, or mis-statement. The measurements should not be relied upon for valuation, transaction and/or funding purposes. This plan is for illustrative purposes only and should be used as such by any prospective purchaser or tenant.