



## Park Street, SW6

£2,450,000

A truly exceptional three bedroom lateral apartment offers just shy of 2000 sq ft of beautifully designed internal space, complemented by more than 125 sq ft of private terrace area, located on the first floor in the prestigious Chelsea Creek development.

Residents of Chelsea Creek Tower enjoy an unrivalled range of exclusive facilities, including secure underground parking, a private residents' spa, swimming pool, and state-of-the-art gymnasium. A 24-hour concierge service ensures security, convenience and a seamless lifestyle experience. Perfectly positioned for riverside walks and easy access to central London.

### Features

- Underground Car Parking
- 24 Hour Concierge
- Gym and Spa Facilities
- Panoramic Views of London
- Open Plan Kitchen Living Room
- Three Bathrooms



## Park Street, SW6

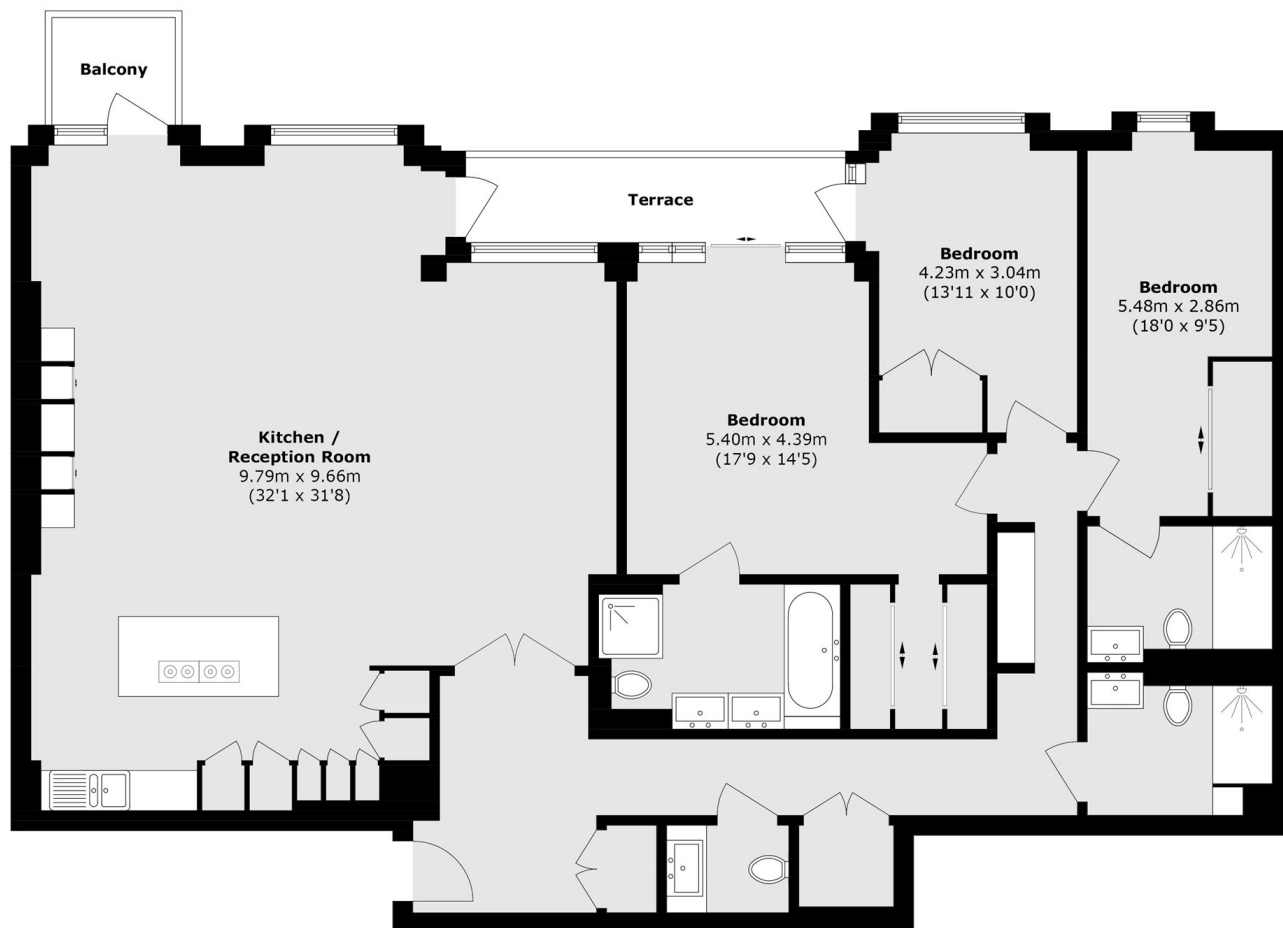
The heart of the home is a spacious open-plan kitchen and living area, offering an abundance of entertaining space and flooded with natural light from three floor-to-ceiling windows. It features fully integrated appliances and a marble-topped kitchen island complete with a built-in wine cooler. This stunning space also provides direct access to a private balcony overlooking the creek and beautifully maintained communal gardens.

The flat offers three well-proportioned bedrooms, each designed to provide comfortable and versatile living space. The principal suite features built-in wardrobes, a stylish four-piece en-suite bathroom, and direct access to the secluded terrace. The second bedroom also benefits from its own en-suite bathroom, while the third bedroom an ideal guest bedroom or office enjoys direct access to the terrace, enhancing the sense of light and indoor-outdoor living.

In addition, the property includes a separate guest W.C. And a dedicated utility area, adding further practicality and convenience to this well-appointed home.



# Park Street, London, SW6



Total area (approx.): 184.8 sq. m (1989.1 sq. ft)  
Terrace area (approx.): 9.7 sq. m (104.4 sq. ft)  
Balcony area (approx.): 2.9 sq. m (31.2 sq. ft)