

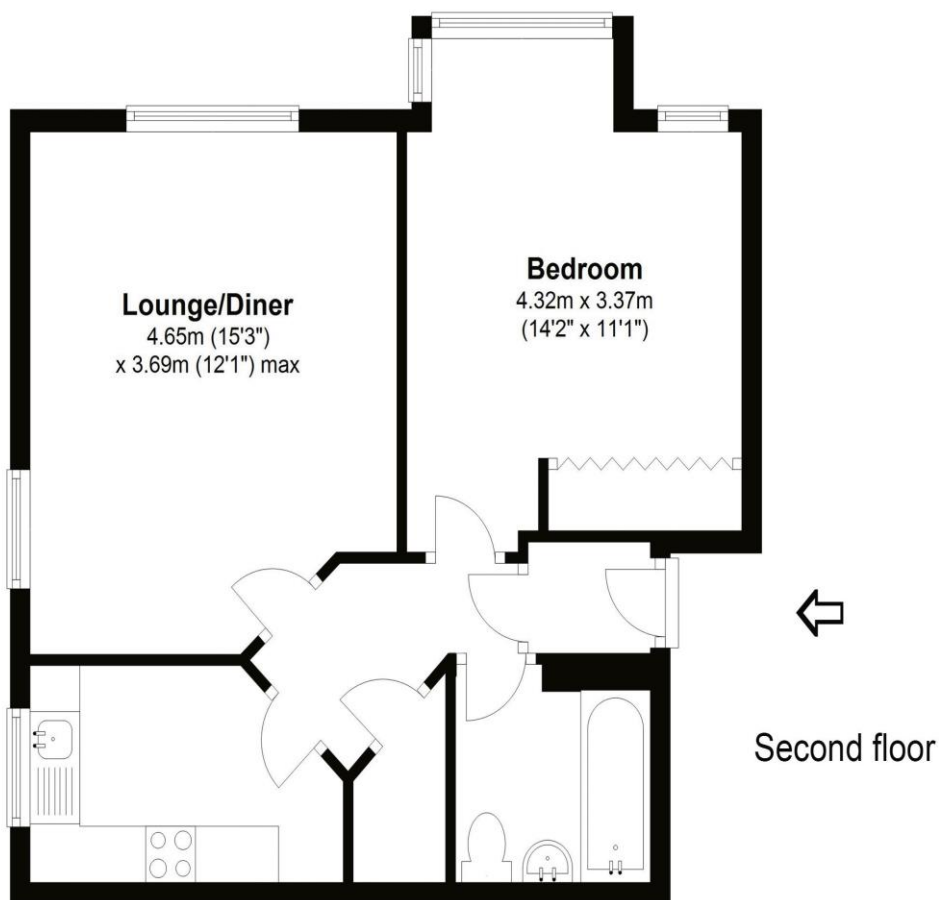


**21 Roydon Court Walton-On-Thames Surrey KT12 5HZ**

**£1350pcm + Initial Deposit**



Approximate gross internal floor area 47.4 Sq M 510.7 Sq Ft



Whilst every attempt has been made to ensure the accuracy of the floor plan contained here, measurements are approximate and no responsibility is taken for any error, omission, or mis-statement. The plan is for illustrative purposes only and should be used as such by any prospective purchaser.

A one-bedroom flat to rent in this popular block close to Walton train station. The flat is presented in good order throughout and is very light and airy. There is a double bedroom with fitted wardrobes, a double aspect living room, a separate fitted kitchen and a bathroom. Externally you have parking for one car. Available to let unfurnished from the 22nd May 2026. EPC Rating C.



**AGENTS NOTES:** These details do not constitute any part of an offer or contract. In issuing them we do not have any authority to give any warranty or representation whatsoever in respect of this property. These details are provided without any responsibility on our part or the part of the vendors. No statements in these details are to be relied upon as representations of fact and purchasers should satisfy themselves by inspection or otherwise as to the accuracy of the statements contained therein.

**Equipment:** We have not tested the equipment or central heating system mentioned in these particulars and purchasers are advised to satisfy themselves as to their working order and condition.

**Measurements:** Great care is taken when measuring but measurements should not be relied upon for ordering carpets, equipment, etc.