



1 Perrywood Close, Holbury, SO45 2HT
£279,950



ANTHONY JAMES
PROPERTIES



1 Perrywood Close

Holbury, Southampton

This three bedroom semi detached house is offered to the market with no onward chain. The property features a double aspect living room, creating a bright space for relaxing or entertaining. The kitchen, with direct access to the garden, also provides an area with potential for a utility space. Upstairs, there are three good-sized bedrooms, a shower room, and a separate WC. The layout is both practical and versatile, with plenty of natural light throughout.

To the front of the property, there is a driveway providing secure parking for two vehicles, with the remainder of the front garden laid to lawn. A side pathway gives access to the sunny rear garden, which is mainly laid to lawn and bordered by mature shrubs and established hedging, offering privacy and a pleasant outlook. The rear garden also features a timber shed, providing useful storage for garden equipment or bicycles. This outdoor space is perfect for families, keen gardeners, or those who enjoy outdoor entertaining.

Council Tax band: B

Tenure: Freehold



1 Southward House
Dibden Purlieu SO45 4PT

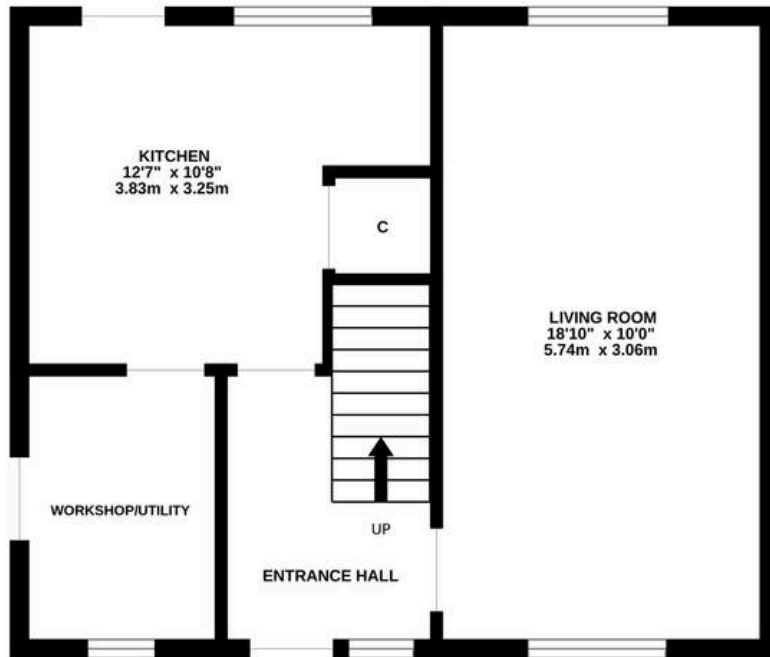


T: 02380 844405

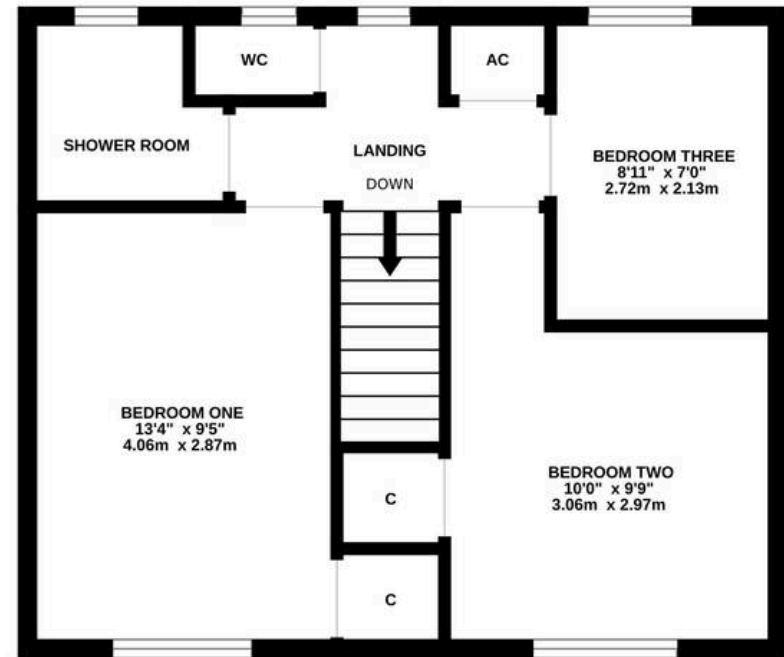
info@anthonyjamesproperties.co.uk



GROUND FLOOR
431 sq.ft. (40.1 sq.m.) approx.



1ST FLOOR
431 sq.ft. (40.1 sq.m.) approx.



TOTAL FLOOR AREA : 862 sq.ft. (80.1 sq.m.) approx.

Whilst every attempt has been made to ensure the accuracy of the floorplan contained here, measurements of doors, windows, rooms and any other items are approximate and no responsibility is taken for any error, omission or mis-statement. This plan is for illustrative purposes only and should be used as such by any prospective purchaser. The services, systems and appliances shown have not been tested and no guarantee as to their operability or efficiency can be given.

Made with Metropix ©2026