



## ST. GEORGE WHARF, SW8

£500,000

A bright second -floor one-bedroom apartment in the popular Kestrel House, St George Wharf, featuring a spacious reception with wooden floors leading to a private balcony with partial River Thames views, double bedroom with built-in wardrobes, and a modern bathroom

- One Bedroom
- 2nd Floor
- Partial views of the River
- 494 sq.ft
- Private Balcony
- 24hr concierge

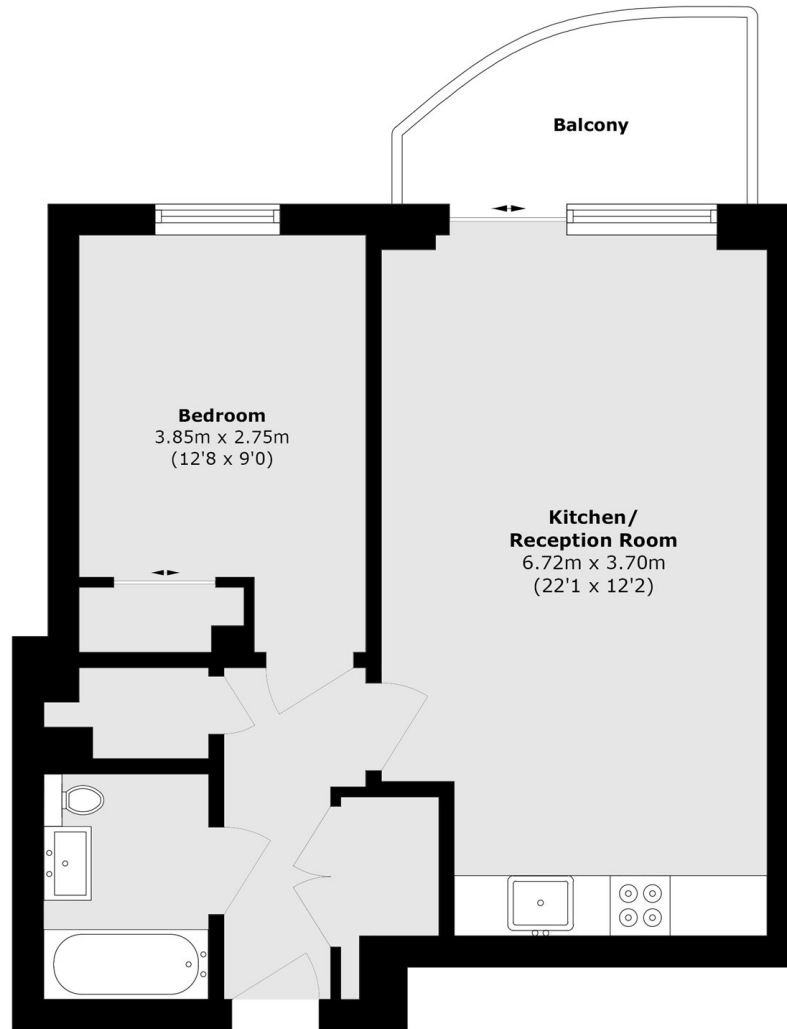


## ABOUT THE HOME

This London riverside location benefits from a 24 hour concierge service, landscaped courtyard gardens, restaurants, dentist, GP, Gym and supermarket. Residents of St George Wharf benefit from easy access to both Vauxhall Station (Victoria Line, Overground & Bus Station).







Total area (approx.): 45.9 sq. m (494.0 sq. ft)  
Balcony area (approx.): 3.91 sq. m (42.0 sq. ft)

**LiFE RESIDENTIAL**

11 Flagstaff House, London,  
SW8 2LZ  
Sales: 020 7476 1408  
Lettings: 020 7582 7989

Energy Rating: C. We aim to make our particulars both accurate and reliable. However they are not guaranteed; nor do they form part of an offer or contract. If you require clarification on any points then please contact us, especially if you're traveling some distance to view. Please note that appliances and heating systems have not been tested and therefore no warranties can be given as to their good working order.