

ROYSTON & LUND



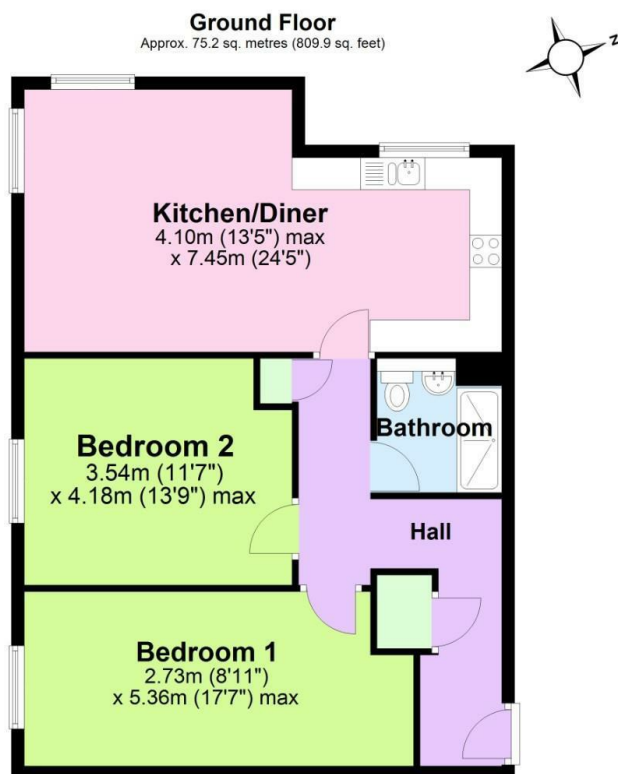
Bridgewater Close, Nottingham

£1,150

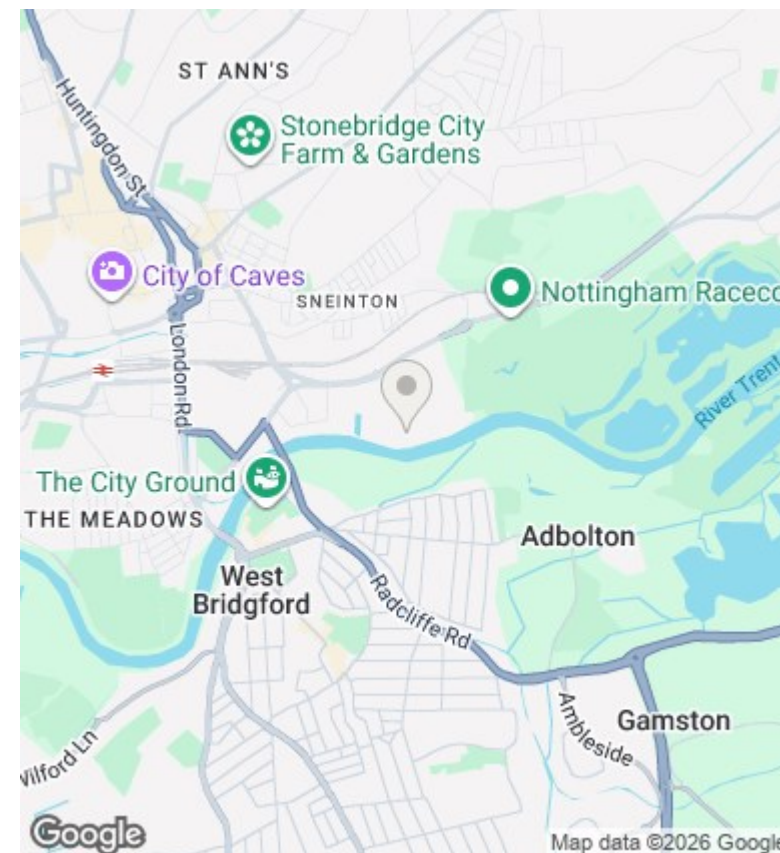
- BRAND NEW Second Floor Apartment
- Generous Open-Plan Kitchen/Dining Room
- Secure Bike Store
- Leasehold - Council Tax Band -New Build TBC
- Two Well Proportioned Double Bedrooms
- High Quality Integrated Kitchen Appliances
- Close By To Numerous Amenities And Excellent Transport Links
- Allocated Parking Space with Electric Charging Point
- Three Piece Tiled Modern Bathroom
- EPC Rating - B

1 Victoria Road, Tamworth, Staffordshire, B79 7HL
01827 66686

tamworthenquiries@royston-lund.co.uk
www.royston-lund.co.uk



Total area: approx. 75.2 sq. metres (809.9 sq. feet)



Directions

Viewings

Viewings by arrangement only. Call 01827 66686 to make an appointment.

Council Tax Band

B

EPC Rating:

B

Energy Efficiency Rating		
	Current	Potential
Very energy efficient - lower running costs		
(92 plus) A		
(81-91) B	87	87
(69-80) C		
(55-68) D		
(39-54) E		
(21-38) F		
(1-20) G		
Not energy efficient - higher running costs		
England & Wales	EU Directive 2002/91/EC	