



Pembridge Crescent, W11

£930,000

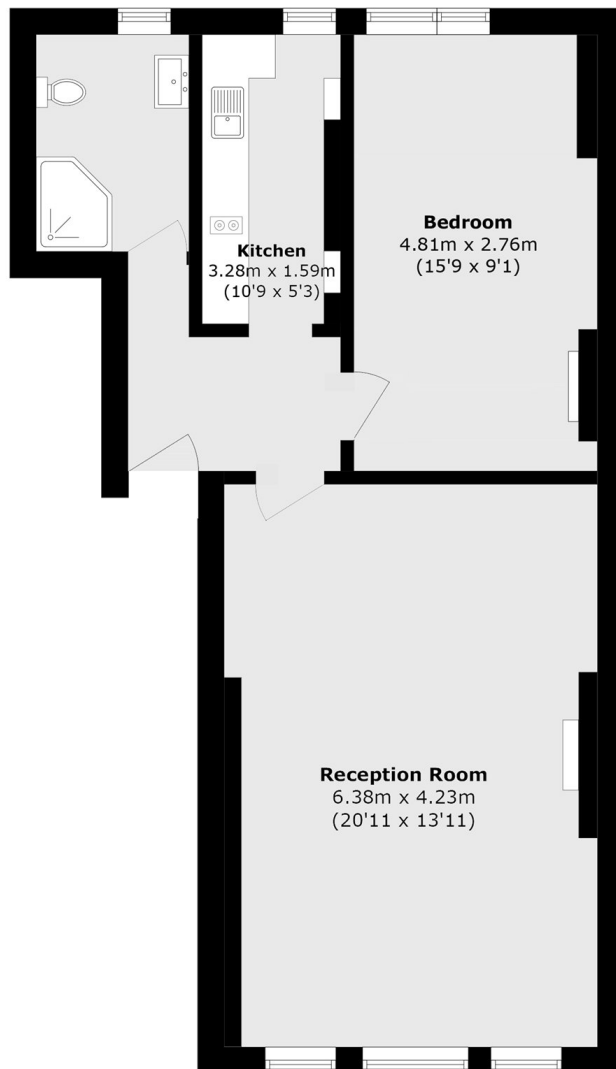
A spacious raised ground floor apartment with high ceilings and floor to ceiling windows in a white stucco fronted building. With scope for refurbishment and reconfiguring (subject to the usual consents), this is an ideal first time purchase or investment for anyone seeking a prime location.

Pembridge Crescent is a prime, tree-lined residential road in the heart of Notting Hill, close to the shops, restaurants and transport links in Notting Hill Gate and the chic boutiques on Westbourne Grove and on Portobello Road.

Features

- One Double Bedroom
- Separate Kitchen
- High Ceilings
- Floor to Ceiling Windows
- Share Of Freehold
- Prime Notting Hill

Pembridge Crescent, London, W11



Total area (approx.): 56.5 sq. m (608.1 sq. ft)