



## Haverstock Hill, NW3

### £785,000

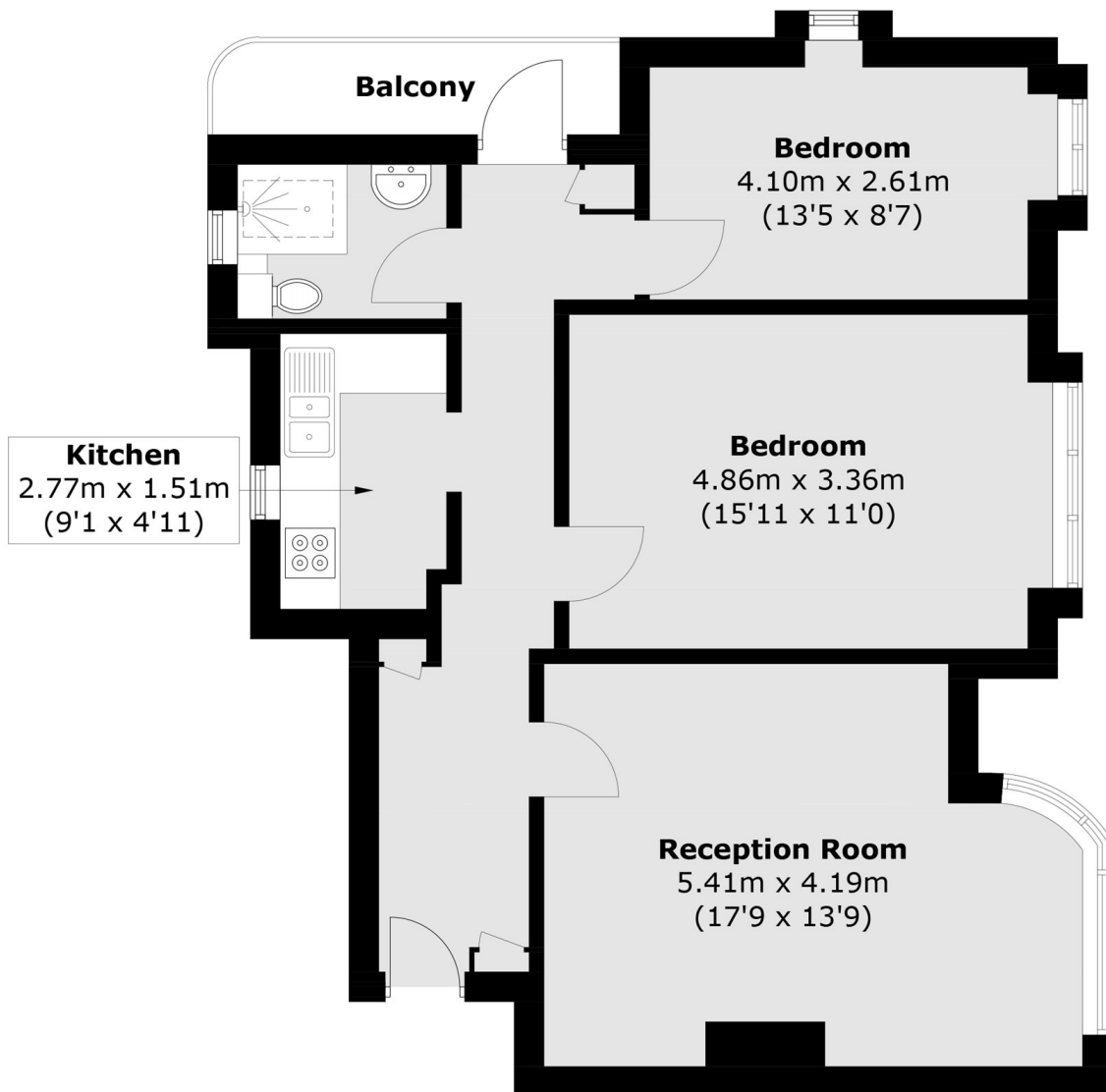
A superb two double bedroom apartment offering truly exceptional, far-reaching views across London from both bedrooms and the reception room. The living space is enhanced by striking 10-foot unobstructed windows, flooding the apartment with natural light, alongside a separate kitchen. Further benefits include lift access and a dedicated external storage room.

Set in a highly regarded Hampstead location, Stanbury Court enjoys an elevated position renowned for its outlook and peaceful surroundings. Hampstead Heath and the amenities of South End Green are within easy reach. Excellent transport connections are available via Hampstead Heath Overground and Belsize Park Underground (Northern Line).

### Features

- Two Double Bedrooms
- Exceptional Views
- Lift
- Share of Freehold
- Chain Free
- Approximately 750 Sq.Ft

# Haverstock Hill, London, NW3



Total area (approx.): 67.7 sq. m (728.7 sq. ft)

Balcony area (approx.): 3.7 sq. m (39.8 sq. ft)